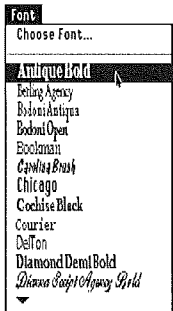


TypeSet™

Tools to help you
work smarter with fonts

Introducing **TypeSet™** — a powerful font management utility that will improve your productivity when working with fonts. TypeSet adds three highly useful tools to your TrueType™ font toolbox: a What-You-See-Is-What-You-Get Font menu, informative font Reports, and user-definable Font Sets — all in one easy-to-use package.



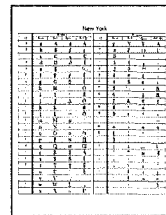
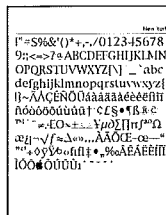
WYSIWYG

If you've ever wished that the font names listed in the Font menu would appear in their own typefaces, you'll really appreciate TypeSet's WYSIWYG Font menu feature. WYSIWYG (pronounced "wizzy-wig") stands for "What You See Is What You Get". It turns the plain, uninformative Font menu into one which saves you time by letting you see what your TrueType fonts look like before selecting them.

Reports

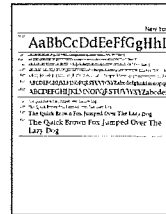
Being able to see what your typefaces look like in the Font menu is great, but it doesn't give you a complete picture of what the fonts will look like on paper. That's why TypeSet offers extensive reporting capabilities. With the Reports feature you can choose from any of four report designs. And, for added flexibility, you can send the reports to either the screen or the printer.

All Characters This report shows every character in a font at a large point size. This lets you see the subtle details of the characters in a font, reflecting the font's personality and unique design elements.



Keystroke Equivalents This report shows which keys you would type to get a particular character, including symbols and international characters. Now you'll always know how to get at those special symbols!

Line Samples This report shows up to ten different fonts on a single page. It includes the most common letters, numbers, and symbols. Plus it shows the disk location of each font — great for creating your own font catalog!



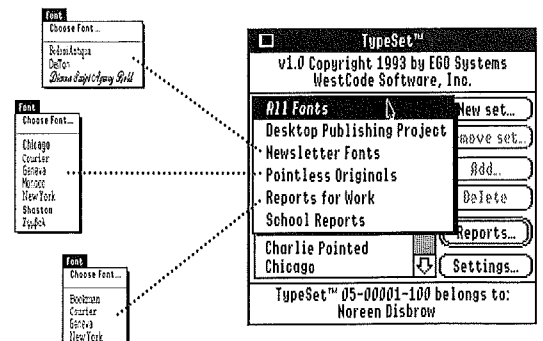
Various Sizes This report shows a font at a host of different sizes. And, you can customize it with your own multi-line phrase! Now you'll have a complete reference of what your fonts look like at various sizes.

Font Sets

The most powerful font management feature of TypeSet gives you total control over which fonts appear in the Font menu through user-definable Font Sets. Simply pick any group of fonts and assign a set name. Then, when you pull down the Font menu, only the fonts in the active Font Set will appear. Imagine how much more quickly and easily you'll be able to select your fonts!

Plus, you can switch between sets anytime — even while your working within an application — and TypeSet will dynamically rebuild your Font menu. You can define Font Sets for any need: different projects, documents, types of fonts, applications, people, and more. Now that's working smart with fonts!

For a limited time, TypeSet is available at the special introductory price of **only \$29.95** — save **\$20** off the regular \$49.95 price! **Call 1-800-448-4250.**



WestCode Software, Inc., 15050 Avenue of Science, Suite 112, San Diego, CA 92128 (619) 487-9200 • Fax (619) 487-9255 • (800) 448-4250
TypeSet™ requires Pointless™ 2.0, an Apple IIGS with 1.25 megabytes RAM and System Software GS/OS 5.04 or later (including System 6). Works with one or more 3.5" disk drives, or a hard disk. All brand and product names are trademarks of their respective companies, and you know who they are.
Copyright © 1993 WestCode Software, Inc.