

T.M.

# ON THREE

The Magazine For Apple III Owners and Users

Volume 2 - Number 1





# ON THREE <sup>T.M.</sup>

The Magazine For Apple III Owners and Users

/// /// /// /// /// /// /// /// /// /// ///

**ON THREE** is THE Magazine For Apple /// Owners and Users. **ON THREE** is devoted to the Apple /// Personal Computer and is a "Clearing House" for views and ideas about the ///. Through comprehensive reviews, easy to follow tutorials, and the option to buy high quality products at low prices, **ON THREE** will bring you the best that the Apple /// has to offer.

Our readers tell the story best: We've been called everything from the best thing since sliced bread to a major reason why people recommend the Apple /// to their friends. There is a very simple explanation - WE KNOW THE Apple ///! Our staff writers and authors know the problems that the average user faces and they design their columns with the novice in mind. Other sections of the magazine are for the more advanced Apple /// user so you will never "outgrow" **ON THREE**. As you learn more about your ///, we will be right there to help you.

The review section of the magazine will tell you exactly what a particular program or hardware device can do - and what it can't. A balanced picture is always presented to give the reader a full view of the items strong and weak points. If a product has deficiencies we will tell you about them. Likewise we point out exceptional packages.

Have you ever wanted to learn how to program? How about learning WPL? Do you want to know more about the System Utilities Program? Well, our tutorial section might be just what you're looking for. Each issue of **ON THREE** contains tutorials that will help you learn and master, in easy to follow lessons, a new and different program or language. And if you have a problem that you can't work out - ask **ON THREE**! We devote a sizeable section of the magazine to letters from our readers. What sets us apart from other magazines is that **WE ANSWER YOUR QUESTIONS!** And we respond to your needs by printing articles that you ask for. So tell us what you would like to see!

Besides these helpful articles, we offer a variety of products at very low prices. Please look over the other pages in this brochure for exciting new products from **ON THREE** such as **Draw ON** /// which gives your Apple /// the power of LisaDraw or MacPaint. You can use **Draw ON** to create free-hand art work or even customize charts and graphs that your other programs create. Some examples of what you can do with **Draw ON** are on the next few pages, and I know you will soon see why this has become a best-seller.

Also shown in this brochure is **Lazarus** /// which is the first window based program on the Apple ///. Incredibly easy to use, this program will restore any file that you have deleted! **Lazarus** /// is the first program to show the true power and beauty of the Apple ///. With **Lazarus**, we are ushering in a new era of user-friendly programs for the Apple /// Personal Computer.

Some of the other products that you may be interested in are the **Micro-Sci** line of disk drives for the Apple ///. Our top of the line model is the **A143** and it holds 4 times the data as a standard Apple Disk ///. That's **572K** Bytes of data for **only \$509!** These drives plug directly into the back of the Apple /// and work with every program for the ///. Fine as a main storage device, they can also be used to quickly backup your hard disk!

As you can see, we think the philosophy of high quality products at low prices is a sure way to get satisfied customers. And the goal of **ON THREE** is to satisfy Apple /// owners. With innovative products such as **Draw ON**, **Lazarus**, **ONTIME** and the **Micro-Sci** line of disk drives, **ON THREE** is one of the few places to go for your Apple /// needs.

So act now! The sooner you start reading **ON THREE**, the sooner you will learn all of the wonderful things your Apple /// Personal Computer can do for you! You can order your first 12 issues of **ON THREE** and any **ON THREE Product** by simply mailing in the enclosed business reply envelope or calling (805) 644-3514 with your Visa or MasterCard number. Remember, **ON THREE Magazine** will keep you up to date on the latest information about the Apple /// Personal Computer.

Sincerely,

*Robert Consorti*  
Robert Consorti  
Editor/Publisher

# Draw ON /// — THE Graphics Tool for the Apple ///

**ON THREE** is very proud to announce **Draw ON ///**. **Draw ON** brings the power of LisaDraw and MacPaint to your Apple //. Powerful cut and paste facilities let you create almost anything that you can visualize. Very fast, **Draw ON** lets you "pick-up" objects on the screen and "Drag" them around in real-time. This is the most exciting package ever for the //. With **Draw ON** you can become a one person graphic arts studio!

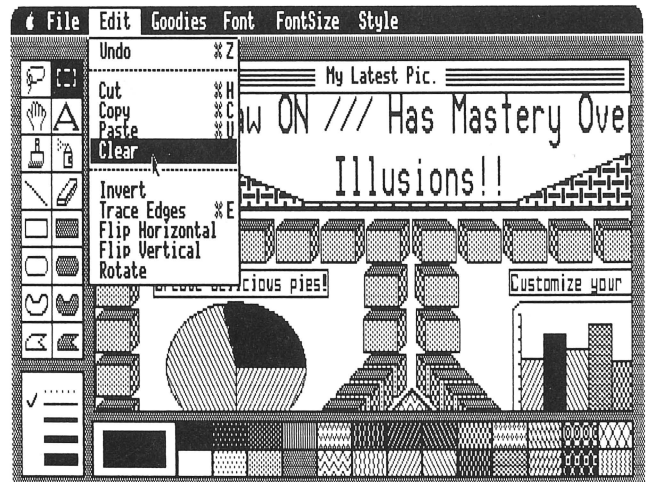
Since it works in any of the Apple //'s color or B/W graphic modes and can quickly print out any picture you create, **Draw ON** is the first program to fully take advantage of the Apple //'s tremendous graphic capabilities. Complex, pseudo three-dimensional figures are easy to create as you can place objects in front of or behind previously drawn objects. CAD is also possible with the powerful "rubber-banding" and grids available.

Ever been bored with some of the graphs that your business charting programs create? Would you like to add different titles? Change the "Look" of the graphs? Use different colors or even texture your graphs? It's all a snap with **Draw ON ///**! Built-in help screens help you master this powerful program and there is a top quality instruction manual that rivals the beautiful books that Apple itself makes.

Over the past few months we have done demos of **Draw ON** at the various trade shows and the response is almost universal: "How can you do that on a Apple ///?" It wasn't easy, but **Draw ON** will truly expand your use and need of the Apple ///.

Priced at only \$129, this is one of the few programs that you can't do without. All of the pictures on this page were created with an Apple /// and **Draw ON ///** - THE Graphics Tool for the Apple ///.

**Draw ON ///** is available at finer computer stores everywhere and may be ordered directly through **ON THREE** for only \$129. Please use the enclosed envelope for orders. **Draw ON ///** requires an Apple /// with 256K or an Apple /// plus.



**Draw ON** produces virtually any image the human hand can create - in **Black & White** and **Color**.

# Why Is Everyone So Excited About Lazarus?

After letter after letter saying such things as: "It's the first program that I feel like an expert at after just five minutes.", "Lazarus not only works very well, it is the best looking program I have ever seen.", and "It makes my Apple /// look and act like a Lisa!", I think it's time to explain just why everyone is so excited about Lazarus.

## Lazarus /// V2.0 Unveiled

Since a picture is worth a thousand words, there are quite a few pictures here of just what Lazarus looks like. Lazarus /// is the **FIRST Window Based Program on the Apple ///**. Incredibly easy to use, this program will restore any file that you have deleted! In addition to the built-in tutorial, Help screens are available at every level.

Lazarus overcomes the difficulties of normal menu based programs by using a new type of menu. The Lazarus menu is set up as a number of electronic file cards. The TAB at the top of the first card tells you it is the Main Menu. Likewise, each other file card will identify itself in the tab portion of the card. The contents of each file card (sometimes called - **Menu Items** -) are displayed on that file card.

LAZARUS /// V2.0  
© 1982, 1983 ON THREE  
22 Jan 84 5:39:06 PM  
Prefix is .D1

```
Main Menu
Welcome to LAZARUS /// - The easy to use file restoration
utility from the folks who bring you ON THREE Magazine.
┌─ Trapped Information ─┐  ┌─ Undelete Files
└─ Set The Prefix ─┘      └─ List Files
└─ ON THREE Information ┘ └─ Quit The Program
```

Press: **ESCAPE** for prior menu, **RETURN** to select, **↑ ↓ → ←** to move. You may also type the name of your selection. **CTRL**-?, **␣**? or **␣**? for HELP.

When you select a menu item, it "Pops-Up" and "Floats" (you have to see it to believe it!) to a position overlaying part of the Main Menu. Shown below, note that the new menu item doesn't take over the entire screen, just the portion below the menu that it exists on. Pressing **ESCAPE** will bring you back to the previous menu.

Unlike other programs, with Lazarus there is no ambiguity over where you are and how you got there. By showing you a "Window" into the program, you can never get lost within Lazarus. With all the **HELP Screens**, you can never get confused as to what you're doing.

LAZARUS /// V2.0  
© 1982, 1983 ON THREE  
22 Jan 84 5:51:52 PM  
Prefix is .D1

```
Main Menu
Program Information
Use this menu to select information on the various features of
LAZARUS ///. This program is completely self-documenting, so
if you have a problem, the information screens will help you.
┌─ General Information ─┐  └─ Menu Items
└─ The HELP Screens ─┘   └─ File Selection
```

Press: **ESCAPE** for prior menu, **RETURN** to select, **↑ ↓ → ←** to move. You may also type the name of your selection. **CTRL**-?, **␣**? or **␣**? for HELP.

Lazarus is so versatile, you can use it with any disk device connected to your Apple ///. Full file selection capabilities are also available to speed the use of the program. As with every

other part of Lazarus, Help is available when needed. Unlike other programs that give a line or two of help information that usually refers you to a manual, Lazarus gives you Help screens that always apply to the part of the programs you are using.

LAZARUS /// V2.0  
© 1982, 1983 ON THREE  
22 Jan 84 6:41:58 PM

```
Main Menu
Set The Prefix
Use this option to set the pathname Prefix. As an
the prefix to: .PROFILE/LANGUAGES/BASIC/WORK.AREA a
then refer to a file by its local name (TEST.1) ins
complete pathname = (.PROFILE/LANGUAGES/BASIC/WORK.

Enter the New Prefix:
┌.PROFILE/─┘
```

CATALYST/  
INTERPS  
CON.TEXT  
PASCAL.STARTS  
S.CODE  
SYSTEM.PASCAL  
SYSTEM.MISCINFO  
SYSTEM.LIBRARY  
SYSTEM.FILER  
SYSTEM.EDITOR  
SYSTEM.COMPIILER  
SYSTEM.ASSMBLER  
SYSTEM.LINKER  
SYSTEM.SYNTAX  
DPCODES.6502  
ERRORS.6502  
SOS/  
VISCALC/  
BASIC/  
PASCAL/  
NONE

Press: **ESCAPE** for prior menu, **RETURN** to select, **↑ ↓ → ←** to move. You may also type the name of your selection. **CTRL**-?, **␣**? or **␣**? for HELP.

LAZARUS /// V2.0  
© 1982, 1983 ON THREE  
22 Jan 84 6:44:10 PM

```
Main Menu
Set The Prefix
Use this option to set the pathname Prefix. As an
the prefix to: .PROFILE/LANGUAGES/BASIC/WORK.AREA a
```

To choose a file from the list, use the up and down arrow keys (↑, ↓) to move the highlight bar over the file you would like to choose and then press the right arrow key (→) to Select it. A right arrow will appear on the screen pointing to the file to remind you which one you have Selected. If you change your mind and want to deselect a file, move the highlight bar back over the Selected file and press the left arrow key (←).

When you are finished selecting a file, press **RETURN** to accept it. If you change your mind about selecting a file, press **ESCAPE** to leave the file selection feature.

Press the SPACE BAR to Continue.

Press: **ESCAPE** for prior menu, **RETURN** to select, **↑ ↓ → ←** to move. You may also type the name of your selection. **CTRL**-?, **␣**? or **␣**? for HELP.

The heart of the program is the **Undelete Files** option. It will restore most any file that you have accidentally deleted. Very fast, the most time it will ever take to restore a file is around 45 seconds. As with other parts of the program, this option has multiple windows and help screens available at all times.

LAZARUS /// V2.0  
© 1982, 1983 ON THREE  
22 Jan 84 8:02:37 PM

```
Main Menu
Undelete Files
Use this option to undelete Files that you have del
enter the directory that holds the file you want to
then press RETURN. A window will open on the right
screen displaying all of the deleted files on that
Select the file you want to restore and press RETURN.

Enter the directory which holds the file you want t
┌.PROFILE/─┘
```

MES/  
T.DRIVER  
OLD.CAT.CON  
SSZARUS.PFSRMA3  
WORK.PFSRMA3  
SSZARUS.PFSRMA3  
SOS.MENU.11  
LINKER.INFO  
ST.CODE00001  
DOTEST.LIB  
DOTEST.CODE  
WORK.PFSRMA3

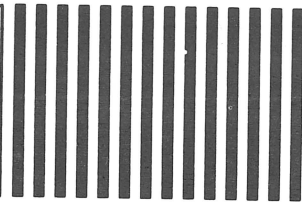
Press: **ESCAPE** for prior menu, **RETURN** to select, **↑ ↓ → ←** to move. You may also type the name of your selection. **CTRL**-?, **␣**? or **␣**? for HELP.

In this short space, we simply don't have enough room to show you all of the help screens and things that Lazarus has to offer. It's more than just a powerful utility program, it is a new way of thinking about programs for the Apple ///. Many people didn't think that this type of a program could be written for the /// - that only the Lisa and the new Mac could provide that type of easy to use and spectacular looking program! Well, Lazarus shows that it can be done - and will be done again in the future for the Apple /// Personal Computer.

Lazarus /// is available at finer computer stores everywhere and may be ordered directly through ON THREE for only \$29.95. Please use the enclosed envelope for orders. Lazarus /// requires an Apple /// with 256K or an Apple /// plus.



NO POSTAGE  
NECESSARY  
IF MAILED  
IN THE  
UNITED STATES



**BUSINESS REPLY MAIL**

FIRST CLASS PERMIT NO. 90 VENTURA, CA

POSTAGE WILL BE PAID BY ADDRESSEE

**ON THREE**

ATTN: ORDER DEPT.

P.O. BOX 3825

VENTURA, CA 93006

your **DMP** can print with the same characters that are shown on your text screen. **Fancy Gothic letters** and many other fonts are available to use on your printer. Complete documentation makes this program very easy to use. Also included on this disk is a program to list the files on your **Apple II** diskettes, all the other programs from the **April-May** issue, and many more Graphic demonstrations.

### **DOM #3 - Changing Your Keyboard**

This disk contains all the programs in the **June-July** issue of **ON THREE**. Included is the program that lets you redefine the positions of the keys on your keyboard, all of the **WPL** programs, the **Disk Formatting Utility**, the **Graphics Sketching** tool and everything else!

If you would like to **Spread Sheet** from Basic or even use the program **Headfirst** to print heading for your program listings, this **Disk Of the Month** can do it for you!

### **DOM #4 - Emulation Patch**

This disk contains all of the Pascal programs from the latest issue of **ON THREE**. Included are the **Apple II Emulation Patch** program, which lets you use any **Apple III Font in Emulation Mode** and the new Pascal startup program for **Access III** that lets you **AutoDial!**

Also on this **DOM** is the program and **UNIT** that lets you do

calculations from within your Pascal programs! Not forgetting the demos, we have also put the **Radiate Graphics Demo** and the **Beatles Music Demo** on this **DOM**. Even a number of pictures created by **Draw ON** are included. These pictures can be viewed with the program on **DOM #5**. It's also packed with programs and information that you can use!

### **DOM #5 - Access Draw ON!**

This disk contains many of the utility programs in the latest issue of **ON THREE**. Included are the new Basic startup program for **Access III** that lets you **AutoDial** and **Ben's SUPER Slot Machine**.

All of the **VisiCalc** and **WPL** programs are included as well as the **Circling Graphics Demo**. One of the nicest programs on this **DOM** is the **Draw ON III Picture Demo**. It will show some of the beautiful pictures that can be created with **Draw ON**. Included on **DOM #4** and **DOM #5** are a dozen creations of **Draw ON** for your viewing pleasure.

For only \$9.95 (plus \$1.50 postage and handling) you can get any of these great packages. All five may be ordered for the extra low price of just \$37.50 (plus \$2.00 for postage and handling). Mix and match any of the **DOM**'s for the low prices shown below. Order today!

Bulk and group purchase rates are as follows (any mix of **DOM**'s):

2-9 disks: **\$7.50** apiece + \$2 total shipping  
10-24 disks: **\$7.00** apiece + \$3 total shipping  
over 24 disks: **\$6.50** apiece + \$4 total shipping

### **ON THREE O'Clock**

Calling all you time conscious **Apple III** owners out there? How would you like a working **clock/calendar** for your **Apple III**? Just as it was originally intended (and now included in the **Apple III plus**), this kit comes with a plug in clock chip with a battery backup.

With an **ON THREE O'Clock** installed, any time you save or modify a file, the current time and date will be stored on disk. Thus you will now be able to tell which file you last worked on. Your programs can now use the **Apple III** built-in date and time routines to give you an up to the second read-out of what time it is.

Extremely easy to install and adjust, it is completely compatible with **SOS** and doesn't use up a slot! This is the one you have been waiting for! The package contains comprehensive instructions and a **Six Month Warranty!** Try and get that deal anywhere else!

Coupled with the **ONTIME** clock driver (see the ad on inside front cover), the **ON THREE O'Clock** is an invaluable tool for everyone who has an **Apple III**. What's the best part? - The price! While others are selling their clock for \$60 and up, we have broken the \$50 barrier. Heck, we broke the \$40 barrier!

For only \$39.95 (plus \$2.50 for postage and handling) you can get the best little clock in town! See the **Special Offer** on the inside front cover for the **ONTIME - ON THREE O'Clock**

2-9 clock sets: **\$36.50** apiece + \$5 total shipping  
10-24 clock sets: **\$33.25** apiece + \$7 total shipping  
over 24 clock sets: **\$31.00** apiece + \$9 total shipping

Bulk and group purchases must have one mailing address. Please use the attached envelope for orders. If the envelope is missing, send to:

ON THREE  
Attn: ORDER DEPT.  
P.O. Box 3825  
Ventura, California 93006

Or call (805) 644-3514 direct for a Visa or MasterCard order.



# Why Is Everyone So Excited About Lazarus

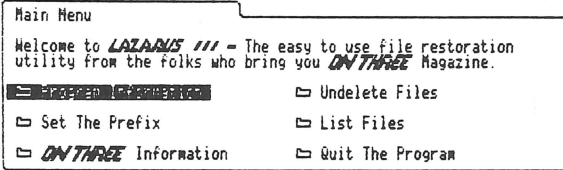
After letter after letter saying such things as: "It's the first program that I feel like an expert at after just five minutes.", "Lazarus not only works very well, it is the best looking program I have ever seen.", and "It makes my Apple /// look and act like a Lisa!", I think it's time to explain just why everyone is so excited about Lazarus.

## Lazarus /// V2.0 Unveiled

Since a picture is worth a thousand words, there are quite a few pictures here of just what Lazarus looks like. Lazarus /// is the **FIRST Window Based Program on the Apple ///**. Incredibly easy to use, this program will restore any file that you have deleted! In addition to the built-in tutorial, Help screens are available at every level.

Lazarus overcomes the difficulties of normal menu based programs by using a new type of menu. The Lazarus menu is set up as a number of electronic file cards. The TAB at the top of the first card tells you it is the Main Menu. Likewise, each other file card will identify itself in the tab portion of the card. The contents of each file card (sometimes called - **Menu Items** -) are displayed on that file card.

LAZARUS /// V2.0 22 Jan 84 5:39:06 PM  
© 1982, 1983 ON THREE Prefix is .D1

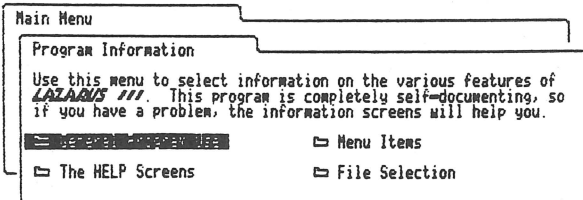


Press: **ESCAPE** for prior menu, **RETURN** to select, **↑ ↓ ← →** to move. You may also type the name of your selection. **CTRL-?**, **d=?** or **d=?** for HELP.

When you select a menu item, it "Pops-Up" and "Floats" (you have to see it to believe it!) to a position overlaying part of the Main Menu. Shown below, note that the new menu item doesn't take over the entire screen, just the portion below the menu that it exists on. Pressing **ESCAPE** will bring you back to the previous menu.

Unlike other programs, with Lazarus there is no ambiguity over where you are and how you got there. By showing you a "Window" into the program, you can never get lost within Lazarus. With all the **HELP Screens**, you can never get confused as to what you're doing.

LAZARUS /// V2.0 22 Jan 84 5:51:52 PM  
© 1982, 1983 ON THREE Prefix is .D1



Press: **ESCAPE** for prior menu, **RETURN** to select, **↑ ↓ ← →** to move. You may also type the name of your selection. **CTRL-?**, **d=?** or **d=?** for HELP.

Lazarus is so versatile, you can use it with any disk device connected to your Apple ///. Full file selection capabilities are also available to speed the use of the program. As with every

ON THREE - The Reference Source For The Apple III

Please Type Or Print Clearly Name: \_\_\_\_\_ Title: \_\_\_\_\_ Company Name: \_\_\_\_\_ Address: \_\_\_\_\_ City: \_\_\_\_\_ State: \_\_\_\_\_ Zip Code: \_\_\_\_\_

Check One: \_\_\_\_\_ Check \_\_\_\_\_ Money Order \_\_\_\_\_ Visa \_\_\_\_\_ Master Card \_\_\_\_\_ Card #: \_\_\_\_\_ Exp. Date: \_\_\_\_\_

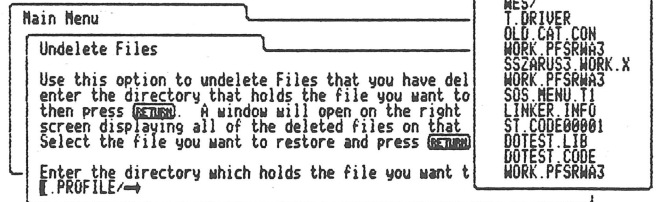
Please send me the following items:

Disk Of the Month #1 #2 #3 #4 #5 @ \$9.95 apiece + \$1.50 (S/H)  
 ON TIME - ON THREE O'Clock @ \$59.90 total + \$3.00 (S/H)  
 ON TIME @ \$24.95 apiece + \$1.50 (S/H)  
 ON THREE O'Clock @ \$39.95 apiece + \$2.50 (S/H)  
 Lazarus III Version 2.0 @ \$29.95 apiece + \$1.50 (S/H)  
 DRAW ON III @ \$129.00 apiece + \$3.00 (S/H)  
 (Lazarus & DRAW ON Require an Apple III plus or an Apple III with 256K)  
 CROSSWORD-SCRAMBLER @ \$19.95 apiece + \$2.00 (S/H)  
 Micro-Sci Gameport @ \$59.95 apiece + \$2.50 (S/H)  
 Micro-Sci Disk Drives A3 @ \$299 A73 @ \$409 A143 @ \$509  
 Add \$6.50 for postage and handling for each drive ordered  
 California Residents add 6% sales tax to total of above items  
 Subscription (12 issues) to ON THREE @ \$30  
 TOTAL =

Signature here \_\_\_\_\_ Please remember to sign and enclose your check or credit card number. Allow 4 weeks for delivery.

Have the subscription begin with \_\_\_\_\_ The current issue \_\_\_\_\_ all back issues (5).

LAZARUS /// V2.0 22 Jan 84 8:02:37 PM  
© 1982, 1983 ON THREE



Press: **ESCAPE** for prior menu, **RETURN** to select, **↑ ↓ ← →** to move. You may also type the name of your selection. **CTRL-?**, **d=?** or **d=?** for HELP.

In this short space, we simply don't have enough room to show you all of the help screens and things that Lazarus has to offer. It's more than just a powerful utility program, it is a new way of thinking about programs for the Apple ///. Many people didn't think that this type of a program could be written for the /// - that only the Lisa and the new Mac could provide that type of easy to use and spectacular looking program! Well, Lazarus shows that it can be done - and will be done again in the future for the **Apple /// Personal Computer**.

Lazarus /// is available at finer computer stores everywhere and may be ordered directly through **ON THREE** for only \$29.95. Please use the enclosed envelope for orders. Lazarus /// requires an Apple /// with 256K or an Apple /// plus.



## CROSSWORD-SCRAMBLER

...is a computer program that is educational and makes learning fun. Unlike many software products, **CROSSWORD-SCRAMBLER** lets you 'use your brain'. No, it's not a "shoot 'em up" type of arcade game...although you won't be disappointed by the graphic displays and musical interludes. Instead, if you like being human and would like to work with a computer (rather than SUBJECT yourself to one), then **CROSSWORD-SCRAMBLER** is what you have been waiting for.

Hundreds of different crossword questions will provide hours and hours of fun for the entire family. With **CROSSWORD-SCRAMBLER** you can turn your **Apple ///** into a true **Personal Computer** - one that is both powerful and entertaining.

**CROSSWORD-SCRAMBLER** is sold exclusively through **ON THREE Magazine** for only \$19.95.

## Disk Of the Month

Do you have the time to type in the programs in each issue of **ON THREE**? Wouldn't it be great if there was a way to get all the programs without having to type them in? - There is, all you have to do is order the disk!

### DOM #1 - Extra Disk Space Plus!

This disk contains all the programs in the **January and February-March** issues of **ON THREE**. Included are **Disk Pak1**, which will give you four extra blocks of disk space on all your data disks (a very handy feature for those of you who don't have a hard disk!); **Disk Pak2**, which lists the files on a directory using Pascal; all of the **Graphics and Sound Demos** and much, much more!

### DOM #2 - Changing the Characters Of Your Printer

This disk contains a program that will do a most amazing thing, it will enable you to change the characters that your **Apple Dot Matrix** (or **ProWriter**) printer prints with. Now your **DMP** can print with the same characters that are shown on your text screen. **Fancy Gothic letters** and many other fonts are available to use on your printer. Complete documentation makes this program very easy to use. Also included on this disk is a program to list the files on your **Apple II** diskettes, all the other programs from the **April-May** issue, and many more Graphic demonstrations.

### DOM #3 - Changing Your Keyboard

This disk contains all the programs in the **June-July** issue of **ON THREE**. Included is the program that lets you redefine the positions of the keys on your keyboard, all of the **WPL** programs, the **Disk Formatting Utility**, the **Graphics Sketching** tool and everything else!

If you would like to **Spread Sheet** from Basic or even use the program **Headfirst** to print heading for your program listings, this **Disk Of the Month** can do it for you!

### DOM #4 - Emulation Patch

This disk contains all of the Pascal programs from the latest issue of **ON THREE**. Included are the **Apple II Emulation Patch** program, which lets you use any **Apple /// Font in Emulation Mode** and the new Pascal startup program for **Access ///** that lets you **AutoDial!**

Also on this **DOM** is the program and **UNIT** that lets you do

calculations from within your Pascal programs! Not forgetting the demos, we have also put the **Radiate Graphics Demo** and the **Beatles Music Demo** on this **DOM**. Even a number of pictures created by **Draw ON** are included. These pictures can be viewed with the program on **DOM #5**. It's also packed with programs and information that you can use!

### DOM #5 - Access Draw ON!

This disk contains many of the utility programs in the latest issue of **ON THREE**. Included are the new Basic startup program for **Access ///** that lets you **AutoDial** and **Ben's SUPER Slot Machine**.

All of the **VisiCalc** and **WPL** programs are included as well as the **Circling Graphics Demo**. One of the nicest programs on this **DOM** is the **Draw ON /// Picture Demo**. It will show some of the beautiful pictures that can be created with **Draw ON**. Included on **DOM #4** and **DOM #5** are a dozen creations of **Draw ON** for your viewing pleasure.

For only \$9.95 (plus \$1.50 postage and handling) you can get any of these great packages. All five may be ordered for the extra low price of just \$37.50 (plus \$2.00 for postage and handling). Mix and match any of the **DOM's** for the low prices shown below. Order today!

Bulk and group purchase rates are as follows (any mix of **DOM's**):

- 2-9 disks: **\$7.50** apiece + \$2 total shipping
- 10-24 disks: **\$7.00** apiece + \$3 total shipping
- over 24 disks: **\$6.50** apiece + \$4 total shipping

## ON THREE O'Clock

Calling all you time conscious **Apple ///** owners out there? How would you like a working **clock/calendar** for your **Apple ///**? Just as it was originally intended (and now included in the **Apple /// plus**), this kit comes with a plug in clock chip with a battery backup.

With an **ON THREE O'Clock** installed, any time you save or modify a file, the current time and date will be stored on disk. Thus you will now be able to tell which file you last worked on. Your programs can now use the **Apple ///** built-in date and time routines to give you an up to the second read-out of what time it is.

Extremely easy to install and adjust, it is completely compatible with **SOS** and doesn't use up a slot! This is the one you have been waiting for! The package contains comprehensive instructions and a **Six Month Warranty!** Try and get that deal anywhere else!

Coupled with the **ONTIME** clock driver (see the ad on inside front cover), the **ON THREE O'Clock** is an invaluable tool for everyone who has an **Apple ///**. What's the best part? - The price! While others are selling their clock for \$60 and up, we have broken the \$50 barrier. Heck, we broke the \$40 barrier!

For only \$39.95 (plus \$2.50 for postage and handling) you can get the best little clock in town! See the **Special Offer** on the inside front cover for the **ONTIME - ON THREE O'Clock**

- 2-9 clock sets: **\$36.50** apiece + \$5 total shipping
- 10-24 clock sets: **\$33.25** apiece + \$7 total shipping
- over 24 clock sets: **\$31.00** apiece + \$9 total shipping

Bulk and group purchases must have one mailing address. Please use the attached envelope for orders. If the envelope is missing, send to:

ON THREE  
Attn: ORDER DEPT.  
P.O. Box 3825  
Ventura, California 93006

Or call (805) 644-3514 direct for a Visa or MasterCard order.



# ON THREE Presents ...



## *Micro-Sci Disk Drives*

Every once in a while a product appears that is so good **ON THREE** decides to offer it for sale to our readers. *The Micro-Sci* line of disk drives (and the *Gameport ///*) are the first of these superior type products. Byte for byte, these drives offer greater speed and more value than any comparable drive on the market today. If you are looking into purchasing an external disk drive for your ///, **ON THREE** encourages you to look into this fantastic product line.

Expanding disk storage on the Apple /// can be an expensive proposition.

But *Micro-Sci* has a better proposition for you, because our disk drives for the Apple /// give you greater capacity and performance for every dollar spent.

And there are no compatibility problems. The A3 is a direct replacement for Disk /// drives, and the 70-track A73 and 140-track A143 are supplied with a driver that is easily added to the SOS driver module, affording extra storage and fast seek rates for all of the programs that run under SOS.

Talk about compatible! All three are the same size as your built-in drive and they use the same diskettes!

Are all of your slots full? Don't worry, these drives plug right into the back of your /// and they don't need a power cord! Up to three extra disk drives can be daisy-chained and they can be mixed in any combination of Disk ///, A3, A73 or A143.

The A3 offers identical capacity to the Disk /// and is an excellent choice for a second disk compatibility in the Apple II emulation mode.

At 286 KBytes, the A73 has double the capacity of the Disk /// while the **A143 packs 572 KBytes** of data onto a diskette. With over *half a megabyte* of storage space, the A143 makes a truly viable backup device for the Profile Hard Disk.

With that large a capacity, many people find that they *don't need a hard disk!* Since up to three A143's can be used with your ///, you can have over one and three quarter megabytes of data on-line at all times!

**ON THREE** is pleased to announce the following low, low prices on these great disk drives.

	<b>A3</b>	<b>A73</b>	<b>A143</b>
Suggested List Price:	\$379	\$529	\$659
<b>ON THREE Price:</b>	\$299	\$409	\$509
Savings	\$80	\$120	\$150

To order, use the attached envelope and add \$6.50 for postage and handling for each drive ordered. Please allow four weeks for delivery.

## *Gameport ///*

You don't have to be chained to your job, and neither does your Apple ///. After the working day is done, release your computer into the exhilarating world of adventure and challenge with a *Gameport ///* from *Micro-Sci*. The new *Gameport ///* game controller adapter lets you use game paddles, joysticks and all your favorite Apple II amusement packages with your Apple /// computer. The *Gameport ///* is easy to use and simple to install - your only challenge is to conquer the invaders!

## *The Gameport ///*

- Allows all games written for the Apple II to be used on the Apple ///.
- Works with all Apple II game paddles and joysticks.
- Allows programs which require a game I/O protection key to run in Apple II emulation mode.
- Can be installed in any slot.
- Does not interfere with the normal operation of the Apple ///.
- Package includes: *Gameport ///* board, Apple II Emulation Modification Diskette and complete, easy-to-follow instructions (Apple II game controllers not included).

**ON THREE** proudly sells the *Gameport ///* by *Micro-Sci*. For only \$59.95 you can now get the best that the Apple /// and the Apple II has to offer. That's \$15 off the suggested list price so don't be left out, place your order today! Please use the attached envelope for ordering and remember to add \$2.50 for postage and handling.

# **ON THREE Presents . . .**

## **ONTIME Features:**

- 1) Time & Date displayed whenever YOU want it!
- 2) Works with ALL programs!
- 3) Displays the Day, Month, Year Hour, Minute and Second.
- 4) Stop Watch/Timer Mode.
- 5) An unbelievable enhancement to your Apple /// system.

Calling all of you Time-Conscious professionals: Before ONTIME™ the only way you could find out the time and date from within some programs is if you looked on your watch!

ONTIME, the incredible new product from *ON THREE* Magazine, will conquer this problem by giving your Apple /// a great new feature: With the ONTIME clock driver installed you can display the Time & Date whenever YOU want it!

A simple keystroke combination will turn the clock display on, another will turn it off. One more turns on a stopwatch that can count down by tenths of a second! This is extremely useful in monitoring how long you've been on the telephone, or using a computer service like the Source.

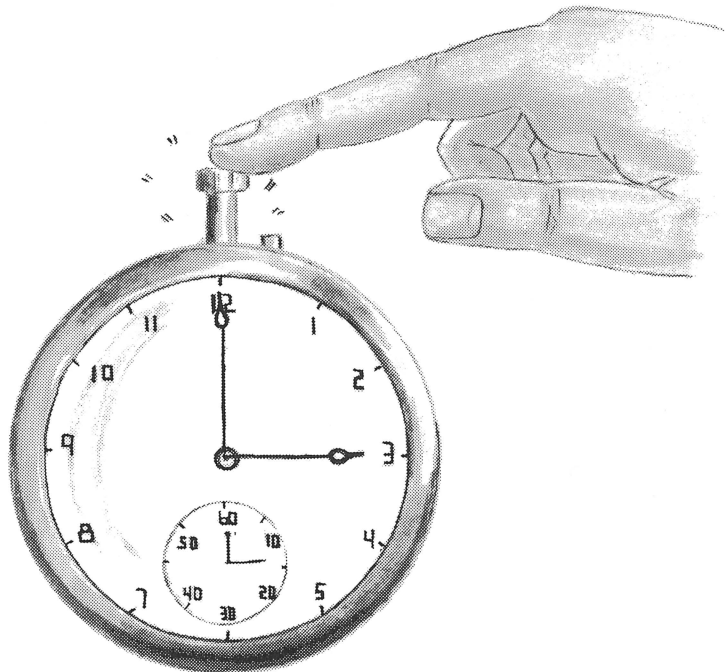
The best part about ONTIME is that it operates in the 'background' - continuously displaying the Time & Date while you are doing something else. Thus you can be working on your spreadsheet, typing a letter with your word processor or even printing out a financial report and ONTIME will continuously update the Time & Date information on the screen.

Completely compatible with all Apple /// programs that run under SOS, ONTIME is sold exclusively through *ON THREE* Magazine for only \$24.95. Please add \$1.50 for shipping and handling, California residents must also add 6% sales tax.

ONTIME requires an ON THREE O'Clock clock/ calendar or equivalent to work.

Special Deal! For a limited time you can purchase the ONTIME - ON THREE O'Clock combination for only \$59.90. That's five dollars off! If you've been waiting for a reason to get a clock — ONTIME is it!

## **ONTIME Clock Driver**

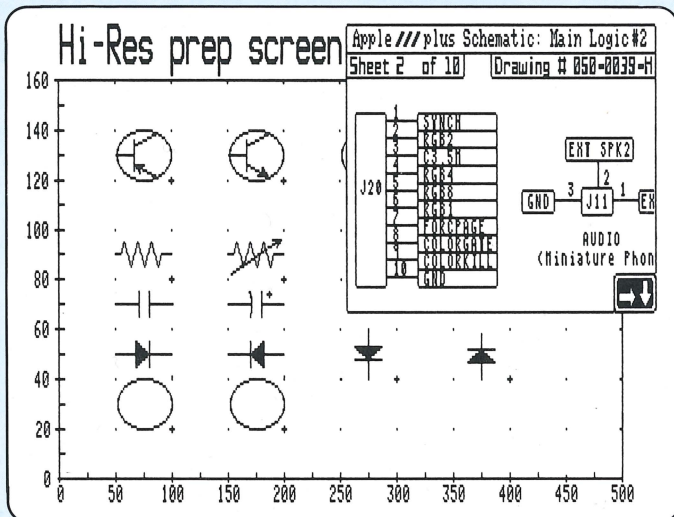




# ON THREE Proudly announces...

**Draw ON ///** is a powerful and versatile graphics tool designed exclusively for the Apple /// and Apple /// plus computers. **Draw ON ///** transforms your Apple /// into a combination drafting table, easel and sketch pad. **Draw ON** works in all of the Apple ///'s color and Black/White graphics modes and brings the power of **LisaDraw** and **MacPaint** to your ///.

**Draw ON ///** provides powerful cut and paste facilities with the ability to create unlimited libraries of your own special figures and objects (such as circuit components, business logos, animation characters...). You may select these objects and move them onto, between, and around any of the many drawing screens.



Objects may be "shrunk" or expanded, rotated, textured and inverted. They may be moved on top of objects already in the screen, behind previously drawn objects, or overlaid along with other figures on the screen. You can also zoom in on a particular portion of the screen to do detailed work.

The screen that **Draw ON** uses is a window into a much larger document. **Draw ON** allows you to scroll to different parts of the document at will. With the addition of the popular **PKASO** Printer Interface, **Draw ON** can directly print your drawings to a variety of Dot-Matrix printers. The Black and White Pictures on this page were each designed in less than 30 minutes and printed on a standard Apple Dot-Matrix printer. (To print the color pictures you will need an appropriate color printer such as the **IDS Prism**.)

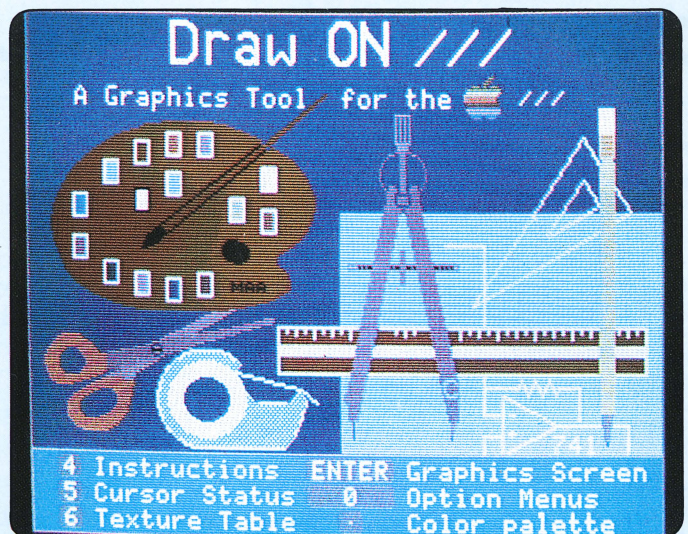
On the color drawing screens you may paint with the Apple ///'s 16 colors and over 1000 pseudo color-texture combinations. And on all of the drawing screens there is no limit to the types of "Brush" that you can use. Simply pick-up any object and draw with it.

## Draw ON /// Has Mastery Over Illusions!!

Create delicious pies!

Customize your charts

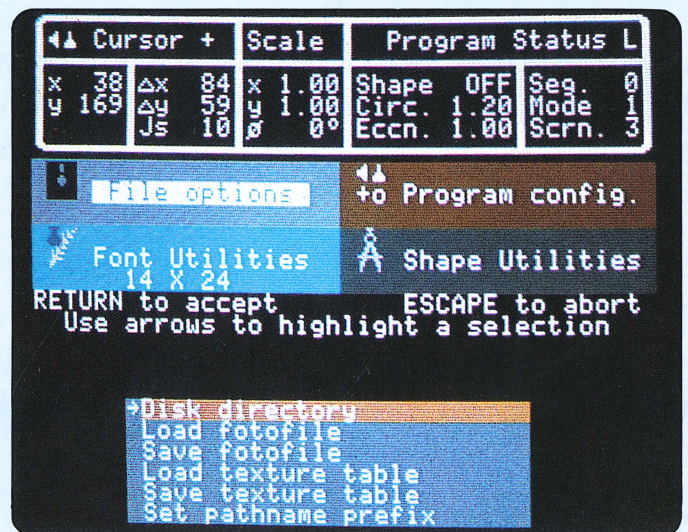
What would you like your Draw ON /// to do? Professional-quality diagrams, organization charts, floorplans, complex illustrations and original artwork are all possible! You can now do CAD on your Apple /// with Draw ON ///!



You can also mix text directly with your drawings. A variety of fonts are supplied in sizes up to 14 x 24. If you don't like any of the typefaces that come with **Draw ON** you can design your own! You can label your drawings with any of these fonts and even use them in your other programs.

Features such as "rubber-banding" of lines, user adjustable grids, built-in help screens and easy to follow menus make **Draw ON ///** the ONLY graphics package for the Apple /// that is both powerful and simple to use. Combined with an excellent instruction manual, you can be doing useful work in less than an hour. The only limit to what you can do with **Draw ON** is your imagination.

**Draw ON** gives an individual the power of a graphic arts studio. Use it in creating charts, preparation of slides and tables for presentations, and letterhead design. With **Draw ON** you can make changes to the dull graphs that your other programs create by adding borders, textures and different typefaces. Even Computer Aided Design applications such as circuit layouts, drafting, and flowcharting are now possible on your Apple /// with **Draw ON ///**.



### Program Requirements:

Apple /// with 256K or an Apple /// plus B/W Monitor (A Monitor /// is recommended)

### Optional Equipment:

Cursor /// Joystick (or equivalent)  
 RGB Color Video Monitor  
 PKASO Printer Interface  
 Dot-Matrix Printer

Suggested retail price: \$129

Available at finer computer stores everywhere and directly from **ON THREE**.

Dealer inquiries invited.