

ON THREE

The Magazine For Apple III Owners and Users



Volume 3 - Number 9

September 1986
\$4.00

• Review ON:

Desktop Manager

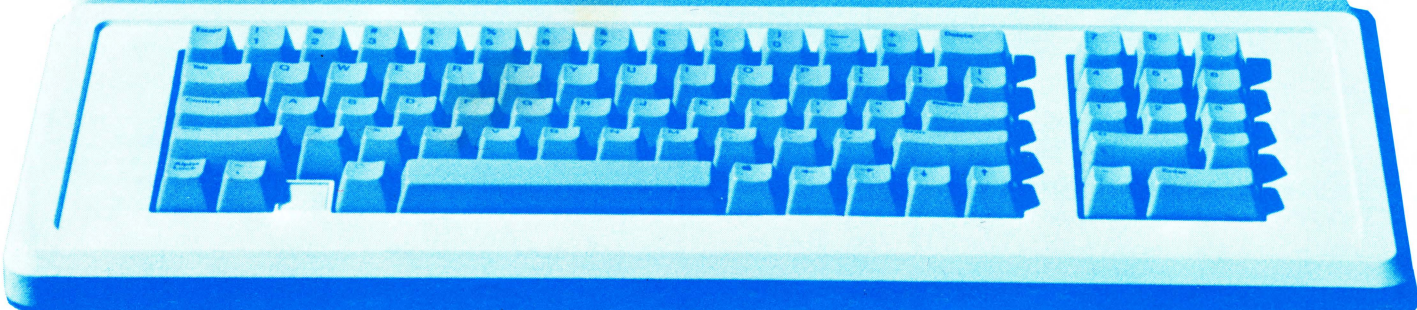
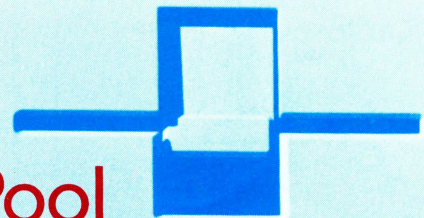


• **Apple ///
Forever!**
(see page 4)

• The Prompt Procedure



• Football Pool



Close Out! on all Micro Sci Disk Drives

Lowest prices anywhere!



A3 - 140K

was \$299.00
now only \$225.00

A143 - 560K

was \$399.00
now only \$325.00

plus \$6.50
shipping/handling per drive



Price Reduction Game Card ///

was \$59.95
now only \$49.95
plus \$2.00 shipping/handling

Save \$\$\$ now while supplies last

Quantities Limited
Call for availability



ON THREE

P.O. BOX 3825
VENTURA, CA 93006

TOLL FREE

(800) 443-8877

IN CALIFORNIA

(805) 644-3514

Mastercard, Visa, American Express*
*3% Surcharge on American Express

Smart users select Selector ///

The smart Program Switching utility from ON THREE

- Switch to Selector /// now
 - Ideal for UniDisk or hard disk systems
 - Compatible with more than two dozen major Apple /// applications
 - AppleWriter ///
 - Business Basic
 - Haba Merge
 - VisiCalc
 - /// E-Z Pieces
- ...and more

\$99 plus \$7 s/h

Selector /// is a state-of-the art program switcher.

A program switcher is a utility that functions as your computerized personal secretary. Its purpose is to make instantly available to you, without rebooting, a wide range of applications programs stored on your hard disk or high capacity floppy (such as UniDisk). Programs such as AppleWriter ///, Quick File /// and more than two dozen others.

Each time you require a different application, just tell your personal secretary, Selector ///, with a couple of keystrokes, and it will be there in a couple of seconds. No need to find your way through sub-directories or paw through a stack of floppies.

When you start your system up in the morning, just boot Selector /// and that's it for the day. Smart users are switching to and with Selector /// now.

Selector /// works with all of these programs:

- | | | |
|----------------------|--------------------------------|----------------------|
| ✓ Access /// | ✓ Business Basic | ✓ Multiplan |
| ✓ Access 3270 | ✓ Business Graphics | ✓ Nexus |
| ✓ Advanced VisiCalc | ✓ Cobol | ✓ PFS: File * |
| ✓ Apple II Emulation | ✓ Draw ON /// | ✓ PFS: Graph * |
| ✓ AppleFile /// | ✓ Easyterm | ✓ PFS: Report * |
| ✓ Apple Speller /// | ✓ Graph'n Calc | ✓ Quick File /// |
| ✓ Apple /// Pascal | ✓ Haba Merge | ✓ Script /// |
| ✓ AppleWriter /// | ✓ Keystroke Data Base * | ✓ Senior Analyst /// |
| ✓ Backup /// | ✓ Keystroke Report Generator * | ✓ VisiCalc /// |
| ✓ BPI | ✓ Lazarus /// | ✓ /// E-Z Pieces |

and Word Juggler too! (with a public domain disk from your local user group. Contact them for details.)

*Indicates boot disk required in internal drive.

Publisher:

Bob Consorti

Editor:

Val J. Golding

Comptroller:

Joseph Consorti

Logistics:

Janet Schanz

Interior Art:

Virginia Carol

Technical Support:

Terry McNeese

Order Dept.:

(800) 443-8877 (toll free)
(805) 644-3514 (in Calif.)

ON THREE On Line BBS

(805) 644-1055

Typography:

West Coast Typography
Van Nuys, CA

Printing:

Ojai Printing & Publishing
Ojai, CA

ON THREE®—The Reference Source for the Apple /// is published monthly by ON THREE, 4478 Market Street, Suite 701, Ventura, CA 93003. (P.O. Box 3825 Ventura, CA 93006.)

For a copy of author guidelines, send a stamped, self-addressed envelope to the above address. Current page rate: \$25 per printed page.

Return postage must accompany all manuscripts, diskettes and drawings submitted if they are to be returned. All manuscripts longer than 500 words or program listings longer than one half page must be accompanied by a diskette if they are to be considered. No responsibility can be assumed for unsolicited materials.

All letters received by ON THREE unless specifically marked to the contrary, will be considered as unconditionally assigned for publication and are subject to ON THREE's right to edit and comment editorially. Your full address will be published only when specifically requested.

Subscription information:

U.S.: \$40 for 12 issues.

For First Class service, remit an extra \$12.

Foreign subscription information:

Canada, Mexico, APO, FPO \$20 additional, \$60 total.
So. America, Europe: \$24 additional, \$64 total.
Pac. Islands, Asia, Australia, Mid-east: \$29 additional, \$69 total.

Back Issues:

Available at \$5 each. Please indicate issues desired.

Postage for ON THREE products:

U.S.: listed on enclosed product price sheet.

Canada and Mexico: double listed US prices.

Outside North America: triple listed US prices.

All funds must be remitted in U.S. Dollars drawn on a U.S. bank or funds in your native currency at the current exchange rate drawn on a bank in your country.

Group purchases must have one common mailing address. Please contact ON THREE at the above address for information on current volume pricing and terms.

ON THREE is a registered trademark of ON THREE, Inc. Apple, Apple II, Apple II plus, Apple ///, Apple /// plus, Applesoft, Apple Business Basic, Disk II, Disk ///, UniDisk, Lisa, LisaDraw, Macintosh, MacPaint, MacWrite and ProFile are registered trademarks of Apple Computer, Inc. Micro-Sci and Gameport /// are registered trademarks of Standum Controls, Inc. Selector /// is a registered trademark of Sabre Software, Inc. ON THREE O'Clock, Lazarus ///, Draw On ///, Desktop Manager and ONTIME are registered trademarks of ON THREE, Inc.

Opinions expressed in this magazine are those of individuals authors and staff and not necessarily those of ON THREE.

Entire contents copyright ©1986 by ON THREE. All rights reserved.

SUBSCRIPTION FORM

ON THREE (805) 644-3514
P.O. Box 3825, Ventura, CA 93006

Name _____

Address _____

City _____

State _____ Zip _____ Phone _____

enclosed \$ _____

M/C Visa AE* NEW RENEWAL

number _____ exp. date _____

Signature _____

*3% surcharge on American Express.

ON THREE

The Magazine For Apple III Owners and Users

/// /// /// /// **Table of Contents** /// /// /// ///

Volume 3, No. 9

September, 1986

FEATURES

Review ON: Desktop Manager John R. Sollman here is the real skinny on the newest of desktop accessory programs, no holds barred	5	Direct Video Access: The Prompt Procedure John E. Cisar an assembly language procedure for pascal and an invocable module for basic to speed up and control your screen display	27
Create your Own: Football Pool Dennis P. Beck at last, here is a basic program to automate the traditional office football pool	19	When is a Macro Not a Macro: AppleWriter Forever Sharon Webb ... when it's a glossary, of course. learn about wpl glossaries as sharon knows all, tells all	31

DEPARTMENTS

The Editor Dishes it Out: Apple.Sauce Val J. Golding search for some subtle samplings of significant september stories	3	Three Questions (and a few answers): One, Two /// Forum traditionally on page 23, where else would you expect our popular letters column	23
The Honeymoon is Over: Block Write Bob Consorti bob's back with a smashing new idea. don't skip this page	4	Apple /// Forever stop here and register now for the forthcoming conferences and don't forget to vote, even if you don't register	26
ON THREE Price List look for new and lower prices on micro-sci disk drives in the current listing	13	Call Three: Hot Line one of the great forces keeping the /// community together, you can find help here	30
The /// Lives Again: Rantings Richard/Lavona Rann appropriately named, this new column offers tips and tidbits for one and all	15	Apple /// User Groups a complete list of local, national and international groups waiting to aid you	30
De Classifieds here's a chance to find some real bargains including used apple /// systems	22		

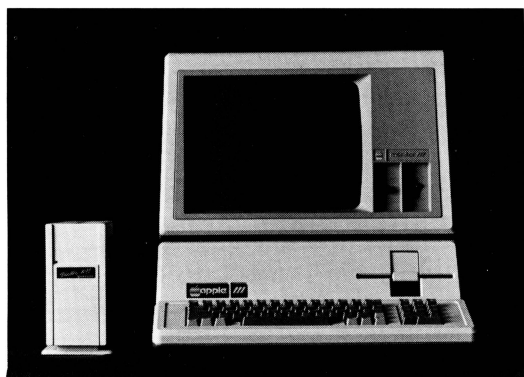
ON: The Cover

ON THREE's Apple /// Forever conferences are suggested in the symbology of infinite dimensions of Apple ///'s.

Photographed by **David Ojerholm**, H & O Studios, 614 E. Main St., Ventura, CA 93001.

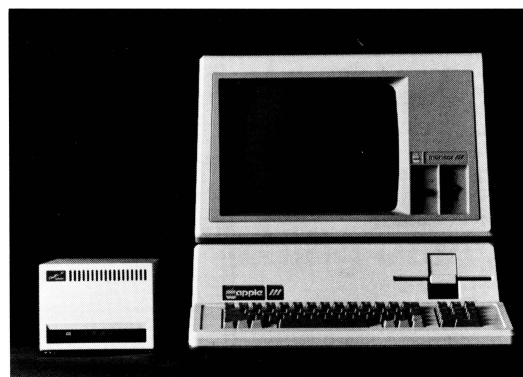
ON THREE Presents...

a new line of high capacity Apple /// disk drives



10-20 MegaBytes

or



34 MegaBytes

ON THREE has exciting news for you! A brand new line of low-priced hard disk drives for the Apple ///.

10-, 20- or even 34-MegaBytes (million characters) of very fast hard disk storage can be yours, priced so low you can't pass them up! These drives will allow you to consolidate all your files on a single disk and reduce the time you waste searching through stacks of floppies.

Combined with our **Selector /// Program Switching Utility**, you can place all (see the Selector ad) of your programs on a hard disk and put your floppy disks away forever. Think of how convenient it will be to be able to run any program from your hard disk—in just seconds.

All our hard drives are manufactured by Xebec—A leading manufacturer of hard disks for the Apple II. They come with a full one year parts and labor warranty, another mark of **ON THREE quality**.

Sider 10—Sider 20

You may have heard of the Sider 10 and Sider 20 for the Apple II. We have modified these drives to work in the Apple ///. They come complete with interface card, cabling, documentation and driver diskette, ready to run on your Apple ///.

The Sider 10 and 20 are attractively styled hard disk drives with a unique daisy-chain option that allows you to attach a second drive to the back of the first, just in case you ever outgrow the 20808 blocks on the Sider 10 or the 41616 blocks on the Sider 20.

Priced at only \$999* for the Sider 10 and \$1299* for the Sider 20, these drives are the best hard disk value on the market today!

Added Bonus: How would you like to be able to backup your entire hard disk in a matter of minutes? We will shortly be shipping the **B-Sider**, a high speed, low cost tape backup to attach to the Sider 10 or Sider 20. Call for pricing and availability.

Xebec 9730 The Xebec 9730 is the Sider's big brother. With a capacity of 69,632 blocks (34-MegaBytes), it is one of the fastest disk drives on the market. If you have very large disk storage needs, the 9730 is the drive for you. Like the Sider drives, the 9730 comes with everything you need to get it running on your Apple ///.

The 9730 is only \$1999* and is available right now from **ON THREE**.

A Note On Large Hard Drives:

Since the Apple /// can only work with disk volumes up to 16-MegaBytes in size, each of our large hard drives (Sider 20 and 9730) have been split into two or more sections. Our 20-MegaByte disk is partitioned into a 16-MegaByte volume and a four-Megabyte volume. The 34-MegaByte disk is partitioned into two 16-MegaByte volumes and one two-MegaByte volume. Partitioning simply means you will have two or three disk volumes in one drive box.

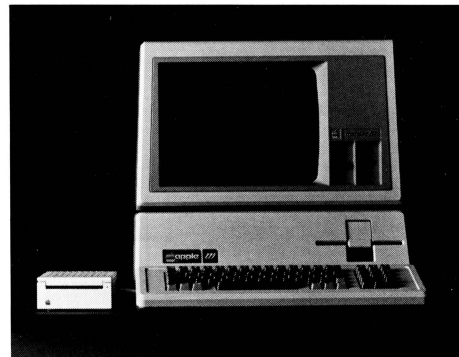
UniDisk ///.5 800K Micro-Floppy

The **UniDisk ///.5** is an 800K 3.5 inch disk drive for the Apple ///. If you have a hard disk and hate to do backups, the UniDisk ///.5 is the ideal solution. You can backup an entire ProFile with just seven UniDisk micro-floppies. Faster than a normal disk drive, the UniDisk ///.5 is a great time-saver.

Even if you don't have a hard disk, wouldn't it be great to get rid of your regular floppy disks? The new 3.5 inch disks are great! They fit in purses, briefcases, and even shirt pockets much easier than standard 5¼ inch disks. With a hard plastic shell, they can take far more punishment than the easily destructible 5¼ inch diskettes. You can also use your diskettes on UniDisk-equipped Apple //e and //c computers. Since these same 3.5 inch disks are used on the Macintosh, a utility will be coming soon to transfer files to and from the Mac.

The **ON THREE UniDisk ///.5** comes complete and ready to run on an Apple ///, including drive, interface card, cabling, documentation and driver disk. A truly great buy, priced at only \$499*.

If you already have a UniDisk for your Apple //e, the driver and diskette are available separately at \$50 plus shipping.



*Shipping charges extra: Sider 10, Sider 20 and Xebec 9730: \$35. UniDisk ///.5: \$10. UniDisk ///.5 documentation and driver disk: \$3.

To order, call (805) 644-3514 or write:

ON THREE, Inc.
Attn: Order Dept.
Post Office Box 3825
Ventura, CA 93003

We accept Visa, Mastercard, and American Express. There is a 3% surcharge on orders charged to American Express. California residents add 6% sales tax (on products only).

Apple.Sauce

val j. golding

Well-Come On In, Terry. . .

We'd like to start off this month's column with a welcome for **Terry McNeese**. Terry joins *ON THREE* from the U.S. Navy with a strong electronics background. Let's hear a big round of applause for Terry, folks. Already he is our resident guru on 512K boards which he also builds and tests, and in the future we expect him to contribute "How to Install. . ." type articles for the magazine.

One thing Terry asked us to pass on to you about our 512K boards is that even though they are fully tested and burned in before leaving here, a couple of things may happen when you first place them in service. During shipment, chips will sometimes have a tendency to vibrate loose, which if not noted can later cause what appears to be a RAM chip failure. Secondly, as chips heat up from normal usage, the heat may cause a chip that is not firmly seated to work its way up out of the socket to the point where the machine will crash. To prevent this, we suggest that each chip be checked by pressing it down into the socket, first from one end and then from the other, while at the same time supporting the circuit board to prevent possible damage. Then, after everything has checked out ok, leave the power on for a couple of days so the chips can "season," and then reseat the chips one more time.

These simple steps should prevent many of the problems that a new upgrade user can experience and assure you of a 512K board which will be reliable for years to come.

News and Views:

That's the subject matter of *Ranntings*, our new column from the pens (or word processor, if you prefer) of **Richard and Lavona Rann**. The general idea is to keep you, as an end user, up to date on goings-on in the world of the ///, new hardware and software, discontinued products, coming events of interest, user group activities, and tips on how you can get the best use out of your Apple ///. In addition, you will find the Ranns completely open and receptive to readers' comments and suggestions. The type of coverage *you* would like to see can help shape the course of future columns.

It may often look like we are patting ourselves on the back when we talk about new *ON THREE* products, but after having worked with the fabulous *Desktop Manager* and its modules for some months, we don't know we lived without this convenient collection of desktop accessories. But better than hearing it from us, one of our first purchasers was author **John Sollman**, who presents here a comprehensive review of it. And you may note also that John doesn't hesitate to point out what he considers deficiencies. He calls them as he sees them. You can read every detail, starting on page 5.

For those of you who wrote and called, newlywed publisher **Bob Consorti** is back, and with him his *Block__Write* column. See page 4 for this month's topic.

With summer barely upon us, we find it a little difficult to think about autumn leaves falling and the other symbols that signify the approaching year end. Nevertheless, you the reader are seeing this just before the fall equinox, and one such symbol that we commonly associate with the last quarter of the year is football. A traditional event that occurs with the football season is the office football pool. If you've ever been a pool organizer you may have even gotten called on the carpet for taking the time to hand-draw those pool sheets. But no more. **Dennis Beck's Football Pool** is a BASIC program written to save you all that time. It lets you enter everyone's names and scores, and then neatly prints it out for you.

Sharon Webb returns this month with another chapter of *AppleWriter Forever*, this time with a brief tutorial on glossaries and how to use them. For those of you have not availed yourselves of this powerful AppleWriter feature, you will find interesting reading. And if you're puzzled as to what a glossary truly is, you may find the definition "macro" more revealing.

ON Pascal /// is a feature you will *not* find in this month's *ON THREE*; **Dennis Cohen** tells us his faithful Apple /// has strayed from the true path and requires a serious attitude adjustment. We do hope by the time October rolls around that he will be back with us. Incidentally Dennis also says that he is looking for reader feedback. He would like to know in what directions he should proceed. So if you have read his previous columns, he would much appreciate a line or two in our care.

Another missing column is **Mel Astrahan's** continuing series on Apple /// graphics animation. When we spoke to Mel recently, he told us he was hard at work on finishing *Grafix Manager*, the exciting new desktop/standalone module you will find advertised elsewhere in these pages. Mel gave us the option of a column for this month at the cost of delaying the product release, so you know what our answer was.

That's not all, of course, but as you know, we have to hold back on a few things, just to whet your appetite. So right now, take a stroll through our pages and see what other interesting items you can turn up.

Shades of H. G. Wells

We're predicting the future now, and one of the brilliant new technologies is *Desktop Publishing*. Now we may think we know all about it, at least as it applies to the LaserWriter and the Macintosh, but **Ken Johnson** adds a new twist when his article shows how to use the Postscript language with the Apple /// and LaserWriter.

We can't tell you the countless number of phone calls and letters we have received from people searching for a decent communications program for the Apple ///, so look forward to **John Sollman's** typically in-depth review of Quark's *Terminus* communications program.

Bon voyage!



Block_Write

bob consorti

Over the past few months, *ON THREE* has seen a surge of interest in the Apple ///. This is due primarily to an increase in the number of Apple /// owners. How, you wonder, does the number of /// owners increase when Apple no longer sells the machine? To answer fully requires a little background.

When the Apple /// was introduced, it was touted as a business machine. Early Apple /// owners appeared to love their machines and bought more for their businesses. Thus the average owner (according to figures disclosed to me by Apple) had 3.4 Apple ///'s.

Over the last year, many owners of multiple Apple ///'s have been, alas, selling their ///'s. A typical practice has been to sell the machines at cut rate prices to the office workers who had previously used them. Thus while the number of machines in use remains nearly constant at around 100,000, the number of owners is increasing.

What this leads to is that the /// community, now more than ever, needs the kind of information that keeps them happy—new hardware, new software and more. The "more" implies something that for lack of a better term I will call unity. There are tens of thousands of Apple /// owners who don't know anyone else with an Apple ///. They don't know of the wealth of new and old software available for their machine, nor are they aware of the innovative hardware that has recently become available.

User groups are great for helping achieve this unity. They can provide some of the information that new users find invaluable—such as using the System Utilities, what software to use for what purpose (/// E-Z Pieces vs. Quickfile) and more. You'll find more on this subject in this month's *Ranntings* column.

ON THREE has done its best to provide our readers with an up to date list of known Apple /// user groups. Still, however, major groups can and do escape us. Just last week a gentlemen from Texas called and told us about his group of some 50 /// users. He had never heard of *ON THREE*, or any of the other user groups. Guess who told him about us—Apple!

/// Copycats

A while back, Apple Computer sponsored a show entitled *Apple /// Forever*. It was there that they introduced the ///e, and other software and hardware products designed to extend the life of the /// product line. Because people are very interested in new developments to extend the life of the ///, *ON THREE* has decided to sponsor a series of **Apple /// Forever** conferences.

Per your response, they will be held in various places around the country commencing early spring 1987. The conferences will display and describe current products and services for the Apple ///. Other companies with Apple /// product lines will attend. The purpose of the conferences will be to renew interest in the /// and for those owners who attend, to make them aware of the steady stream of new products and to show the wealth of Apple /// software and hardware already available.

At each conference, seminars will be held on the following subjects:

- 1) Using the System Configuration program.
- 2) Comparison of data base products.
- 3) Comparison of spread sheets.

- 4) Comparison of word processors.
- 5) Integrated programs.
- 6) Graphics programs.
- 7) Desktop utilities.
- 8) Evaluating hardware needs.
- 9) Laser vs. impact printers.
- 10) The future of the Apple ///.
- 11) Special notes from our keynote speaker.

An additional session will be held in free-forum style, the purpose of which is to answer questions and problems concerning most any software or hardware product, and to have it answered or solved on the spot by the experts in attendance.

Persons attending will receive a full lunch, numerous coffee breaks, etc., with a no host bar at the conclusion of each conference. Additionally, a block of hotel rooms in the area of each conference will be held for conference attendees wishing to stay the night.

The fee for each conference will be \$100 and advance registration and payment are required. In order to present a particular conference at a given place and date, a minimum number of attendees must be pre-registered. In the event this minimum is not met, the registration fee will be refunded in full. Cancellations received 30 or more days prior to a scheduled conference will receive full refunds; later cancellations will receive 50% of the registration fee.

As a special service to those attending, *ON THREE* will offer guaranteed memory board installations at half the normal cost. If you prefer not to do the installation yourself, or don't trust your dealer, just bring your Apple /// and your 256K or 512K memory board to the conference and one of our expert technicians will install the upgrade for only \$25.

ON THREE will have a limited number of memory boards and other products for sale at the conferences. Because of potential shortages, please order your memory boards early if you want to have them installed during the conference.

Other participating companies with Apple /// products may offer similar product and service discounts during the course of the conferences.

On page 26 you will find a form that may be used to pre-register for the conference. There is also a section that may be used to vote for your favorite Apple /// personalities and programs. In each category, please number your top three choices 1, 2 and 3 with 1 indicating first choice. It is not necessary to register in order to vote. Voting results will be used to select guest speakers and will be published in a future issue of *ON THREE*.

The conferences will offer the ideal opportunity to see the many new and exciting things that different companies have planned for the Apple ///. Since every major Apple /// developer is expected to attend, this may be your big chance to fulfill your "wish list" and discuss your special needs. It is also an ideal opportunity to learn more about how your Apple /// can be put to its best and most productive use.

Using the form on page 26, please register today to allow us sufficient time to properly plan the first series of Apple /// Forever conferences.



Review ON:

Desktop Manager

john r. sollman

As time managers go, I have got to be the world's lousiest. My procedures for auditing business phone calls and keeping track of time spent on behalf of clients have been time-consuming, to say the least. I have all these little scraps of paper cluttering my desk, little notes stuck in file folders. When you need them, you can't find them. If you find them, you can't read them. Then there was always an element of procrastination. I would get sidetracked and fail to record my time at the end of a work session. I generally ended up underestimating my time later on, and underbilling. A change was definitely in order, and *ON THREE* came to the rescue with its release of *Desktop Manager*.™

Desktop Manager, described as an "Expandable Productivity Tool," is a utility program developed and marketed by *ON THREE*. The program requires an Apple /// with at least 256K and one external drive, preferably a hard (or other large capacity) disk drive. Even though the program will work with 256K under most circumstances, 512K is highly recommended. Catalyst users who have some exceptionally large VisiCalc spreadsheets will almost certainly require 512K when using Desktop Manager.

For \$129, the basic package offers a note pad, an appointment calendar, a calculator, a utility to cut and paste text from one program to another, and a mouse interface. Optional modules now available are the *Disk Manager*™ for \$44.95, the *Macro Manager*™ for the same price, and an ASCII Conversion Table for \$9.95. For those so inclined, there is also a game, Mr. SandMan, for \$29.95. Prices quoted do not include a nominal shipping charge. *ON THREE* plans to develop additional modules for the Desktop, and the documentation accompanying the

software contains guidelines to permit experienced Apple /// users to develop their own modules.

The basic package comes in a standard one-inch three-ring binder with a double-sided diskette and 107 pages of documentation. The manual is quite straightforward and, for the most part, very readable. There are several minor omissions and an error or two, however. It has been printed on a good-quality dot-matrix printer and reproduced by offset, rather than being typeset. Some of the information printed in bold expanded type is unfortunately hard to read. It is difficult to tell N from H, for instance, or 1 from I.

Installing Desktop

The software is contained on a double-sided diskette. The front side contains the Installation Program and the Desktop Driver. The flip side contains the Desktop Files, a number of invocable assembly-language modules. Before doing anything else, copy both sides of the original diskette, and store it in a safe place. My next step is always to print a catalog of each disk.

The SOS.DRIVER file as provided on the installation diskette assumes the use of a 5-megabyte ProFile in slot 4. If you are using any other device, or if your ProFile is in any other slot, it is necessary to modify the SOS.DRIVER file on the installation diskette. This is easily done by selecting any boot diskette with the correct SOS.DRIVER file and copying the file to the Desktop installation diskette. When this is done, simply boot the installation diskette. When the boot process is complete, a prompt will appear asking that the Desktop Files diskette be placed in the internal drive. A menu then appears, similar in appearance to the menu in System Utilities or BackUp ///.

Installation is simple, and involves only two steps. The first step is to select option (1), Install Desktop Manager, from the menu. This option creates a subdirectory on the volume which is to hold the Desktop Files and copies the Desktop Files to that subdirectory. Option (2), Add Desktop Manager Driver, is then selected. You will be prompted to insert the boot diskette on which you want to install the Desktop Driver. The program then (1) modifies the boot code in SOS.KERNEL, and (2) installs the Desktop Driver. In the process, the Desktop Driver receives a pointer showing the location of the Desktop Files. You do this for each boot diskette with which you wish to use Desktop Manager. Whenever you replace the driver with an upgraded version, it is necessary to use Option (2) in order to provide the correct pointers. Having done this once, the upgraded driver with its pointer can be copied to any diskette on which Desktop is already installed.

My system consists of a 512K Apple ///, a 34-megabyte Xebec 9730, and some Micro-Sci A143 drives. Since I use Catalyst and the Quark Spooler, I have a very large driver file. In fact, the addition of the Desktop Driver just about expands my driver file to its limit. At present, I use Word Juggler for all my word processing needs.

No problems were encountered in booting the system after installing Desktop. However, Desktop did not work. Rob Turner of *ON THREE* advised that the problem was most probably the position of the .SPOOL driver with respect to .DESKTOP-MANAGER. Both of these drivers use the Apple's interrupt feature, thus there is contention. Desktop will not work correctly unless it is ahead of .SPOOL in the SOS.DRIVER file. The problem was initially solved

by deleting all the drivers except .DESKTOPMANAGER, and then adding back the remaining drivers so that .DESKTOPMANAGER would be first in line. With this configuration, everything worked fine. (Later, however, I was to be in for a little surprise.)

The initial version of Desktop had several minor problems, most of which Rob knew about, and one of which he did not. The two problems I experienced with the initial version of Desktop were: (1) it was not possible to quit properly from Catalyst, and (2) the use of the Closed-Apple-Escape key sequence to access Desktop from within Word Juggler trashed the default file name for storing the document in memory. In addition, use of Closed-Apple-Escape would sometimes produce two dashed lines of inverse video across the screen. These could be corrected with a carriage return, and the document in memory was not damaged. The problem could be classified as a minor annoyance at best, since it remained possible to store the document by typing the file name instead of using a default.

The problems were discussed with Rob, who indicated that he had solved the "Reboot" problem and was working on a revised version of the program which would be available shortly. About a week later, Rob advised that he had identified and fixed the problem with Word Juggler. In the process of fixing the bug, he had also made it possible to cut and paste directly to and from Word Juggler, something that was not previously possible. Appendix F of the manual, which tells how to paste from the Notepad to Word Juggler by block loading a print file may now be disregarded. It contains an error, anyway. In Word Juggler, Closed-Apple-4 on the numeric keypad does *not* block load a document. It invokes the Terminus Setup Menu.

The revised version (1.1) of Desktop contained not only the "fixes" noted previously, but also some other improvements. The revision comes with 14 additional pages of documentation containing, among other things, special instructions for those using Micro-Sci drives and/or the Quark Spooler. Micro-Sci drivers

earlier than version 1.40 do not function correctly with Desktop; the latest versions of the disk and formatter drivers are provided on the revised installation diskette. Also, the new installation disk contains versions of the .MOUSE and .CONSOLE drivers which will work correctly with Desktop. Older versions of .CONSOLE do not permit printing of screens from the Appointment Calendar or Disk Manager. The .CONSOLE driver provided, incidentally, is the Quark version, required for Catalyst to operate correctly.

For those using the Spooler and Spoolstatus drivers, a special procedure is suggested. A driver file module called SPOOLSTUFF is created consisting of .SPOOL and .SPOOLSTATUS. These drivers are then removed from the driver file on the boot diskette. The driver file, DESKTOP.DRIVER is then read from the installation diskette, SPOOLSTUFF is concatenated to it, and the entire module is generated back to the installation diskette as DESKTOP.DRIVER. This places .DESKTOPMANAGER ahead of .SPOOL and .SPOOLSTATUS in a single driver module. Because my .SPOOLSTATUS is dynamically loaded from Catalyst, I did not include it in my version of the driver module. As a result, .SPOOLSTATUS dynamically loads to an .UNUSEDx driver which is ahead of .DESKTOP in the driver file. No problem is experienced in using either the Spooler or Spoolstatus.

The documentation supplied with the revised Desktop suggests that System Utilities be used to copy all the Desktop Files except NOTE.PAD to the /DESKTOP subdirectory on the hard disk. The installation diskette is then booted in the usual fashion. Option (3), Remove Desktop Manager Driver, is selected from the menu. Then Option (2), Add Desktop Manager Driver, is selected. The driver file now contains the revised version of Desktop, plus any spool-related drivers, in the proper order.

Booting my Catalyst diskette thus modified produced... nothing! Examination of the SOS.DRIVER file revealed only two drivers: .DESKTOPMANAGER and .SPOOL. Option (3) had removed .DESKTOP-

MANAGER and all drivers occurring after it. This was easily remedied. I had already copied my Catalyst SOS.DRIVER to the hard disk. I simply copied what was left of my Catalyst SOS.DRIVER file to the hard disk as DESKTOP.DRIVER, concatenated it to SOS.DRIVER, generated the driver file to my Catalyst diskette, and booted my machine with no further problem. According to Rob, a problem arises when trying to remove a driver from any position other than the last in the driver file.

Rob said he has not been able to write code which would remove a single driver from the middle of the file because of space constraints. The driver to be removed and everything beyond it simply goes. In writing the program, he assumed that .DESKTOP would be the last driver in the file. Read paragraph two of Appendix H on page 87 of the Desktop Manager User's Guide. Those of you who have placed your .DESKTOPMANAGER driver near the head of your SOS.DRIVER file, beware! Before using Option (3), be *sure* to have copies of your driver files where you can retrieve them.

When Desktop boots up, the driver initializes and runs through the options which are available. The original version of Desktop did not initialize if the hard disk was not ready, although the program being booted would eventually come up. The new version waits for the hard disk to become ready before initializing. Those who might occasionally want to boot a program without using the hard disk might wish to use the original version of the Desktop driver (1.0) instead of the newer one for any diskette intended for such use. System Utilities and Pascal might be candidates for this.

Installing Additional Options

At this point in time, my Desktop Manager consisted of the basic package. Then, as I was writing this, my Disk Manager and ASCII Chart arrived. Installation of Disk Manager took all of three minutes. All you do is copy .D1/= to .PROFILE/DESKTOP/= . The file, OPTIONE, is copied, along with a subdirectory containing codefiles governing the various file

and disk handling routines. ASCII Chart is installed simply by copying .D1/OPTIONS to the Desktop sub-directory. I am still eagerly awaiting my Macro Manager.™

Use with Word Juggler

The first thing Word Juggler users will note is that the cursor flashes at about one-half its original speed. They will also find that Desktop uses the Closed-Apple key, which Word Juggler uses for strike-overs or to invoke external procedures. In Desktop, simultaneously pressing Closed-Apple and a number 1 through 6 provides direct access to individual Desktop options. While Word Juggler distinguishes keypresses on the numeric keypad from keypresses on the typewriter keyboard, Desktop does not. When Desktop direct access is enabled, the special Word Juggler functions which use the same keystrokes are disabled. The strikeover feature will work with all keyboard characters except those which are used to invoke direct access to a Desktop option. The spelling checker (Closed-Apple-7) and Word Guess Plus (Closed-Apple-8) remain available when Direct Access is enabled. There is absolutely no problem using Word Juggler with Desktop Direct Access enabled. Almost this entire article was done in that mode. How you work determines how you elect to use the software. If you anticipate a lot of cut and paste, or frequent use of Desktop options such as the Notepad or Calculator while composing your document, leave Direct Access enabled. If, however, you find that you tend to use the Closed-Apple key a lot while using Word Juggler, disable the Direct Access.

General Functions

Toggling Direct Access on and off is simple. Open-Apple-Escape brings up the Desktop Setup Menu. From this you select Desktop Setup and enable or disable Direct Access by using the Return key. It should be noted that Direct Access is always enabled when first booting.

The various options are easily learned, but some time spent in reviewing the documentation would be a good investment. Closed-Apple-Escape calls up the Desktop Main

Menu. The up and down keys highlight the various options. Pressing Return accepts the highlighted option. Closed-Apple in combination with 1 through 6 provides direct access as follows:

- 1 Notepad
- 2 Appointment Calendar
- 3 Calculator
- 4 Reserved for use with Macro Manager
- 5 Enable Text Pickup to Clipboard
- 6 Paste from Clipboard to Document in Memory

Within each of the options, the commands are generally mnemonic and consistent from one option to the next. Within options, commands are issued through the simultaneous pressing of the Open-Apple key and a character. In the Notepad, for example, Open-Apple-A permits one to add a new note. In the Appointment Calendar, this same command permits one to add an appointment. Conversely, Open-Apple-D deletes the highlighted note (from the selection menu) or the highlighted appointment.

The Notepad

The Notepad is probably the handiest gadget since the invention of the wheel. The Notepad comes with one blank note. You can add up to 243 additional notes of up to 60 lines each. Each line in a note can contain up to 63 characters. It is not necessary to issue a carriage return at the end of a line. Text automatically wraps to the next line. The tab is set to six spaces, which is adequate for almost any application.

In the Notepad it is possible to cut and paste parts of a note to different locations. Open-Apple-C initializes the copy operation. As the cursor is moved over the text to be copied, the text is highlighted. Pressing Return ends the copy operation. The cursor is moved to the point where the text is to be inserted, and Open-Apple-P (for Paste) inserts the text. Cut and paste in the Notepad is limited to one line at a time. The cursor may be toggled between an insert and a replace mode for convenience in editing. (Open-Apple-E.)

To print from the Notepad (and from all other options except the Calculator), you use Open-Apple-H

(for Hrint?). [Editor's note: for *Hardcopy*.] This displays the printing options which may be selected. Open-Apple-Return toggles through the printing options. Simply pressing Return prints the note on the screen to the default printing device. You may print the note to disk by typing in the destination file name and pressing Return.

To select a different note, you may go forward to the next note (Open-Apple-N) or back to the previous note (Open-Apple-B). The easiest way to do this is to hit Open-Apple-S to get the Note Selection Menu, highlight the desired note, and press Return. For convenience, the manual provides a Key Command Reference which lists most (but not all) commands. Conspicuous by their absence are:

- Open-Apple-A Add a new note
- Open-Apple-R Rename a note

The uses to which the Notepad can be put are limited only by the imagination. I have set up a few applications already, but will probably change them around until I find the most productive ways to use this tool. Right now, all my reminders go into a note called Miscellaneous Reminders. Each day I check this note to see what I must still do. When the task is accomplished, the reminder is deleted. There is a note for each of my consulting clients where I note the activity and the time spent on the client's behalf. Periodically I print the note and file the hard copy. The note is in the same format as my previous billing form, so at the end of the month I simply paste the note to the billing template and print and mail the bill.

My business has me on the phone frequently, and auditing telephone bills has always been a problem. No more! When I make a call, I select the month's telephone note pad and log the date, the number dialed, and the subject matter or person called. With my phone set on speaker, I have two hands available to do this. The beauty of this is that I can create the note no matter what program I am running. Printing a hard copy at the end of the month supports my business expenses when tax time comes around. When all phone calls

in a particular note have been audited, the note is deleted. There is also a quickie phone directory to look up frequently-called numbers. This sure beats juggling a phone directory in my limited work space. Even with all I have put on the Notepad already, I have barely scratched the surface in exploring its possibilities. The Notepad alone is worth the price of the package.

The Appointment Calendar

The Appointment Calendar permits entry of up to 15 appointments per day. The calendar has a number of options, whereby you get a month at a glance, a week at a glance, a day at a glance, or a detailed look at an individual appointment. Open-Apple-H will print whatever is on the appointment calendar screen. If it is the month's calendar, the calendar will be printed with an asterisk in any day for which at least one appointment has been scheduled. If the week's appointment times are shown, they will be printed just as they appear on the screen, pop-up card format and all.

The Calendar permits you to do a lot of neat things. You can scroll through the months to see what date falls on which day of the week. You can select any month to view, and within that month, any week or day. Pressing the right or left arrow keys move the highlighted day to the left or right. Pressing Open-Apple-S shows the appointment times and a truncated description of the appointments set for that day. Moving the up or down arrow positions the highlight over each appointment. Pressing Return shows the highlighted appointment in detail. Pressing Open-Apple-H prints the detailed appointment.

Appointments are entered by going to the calendar for the month in which the appointment is to be scheduled, selecting the day, and pressing Open-Apple-A (add). You are first required to enter a time. Then you are permitted to enter up to 14 lines of text, no more than 31 characters per line, detailing the appointment. Most, but not all, of the features of the Notepad are available to write and edit appointment information. Word wrap is one such feature that is not present. Appointment times can be changed

within one day by using Open-Apple-C. Appointment dates may be changed only by deleting the appointment on one day and adding it on another. This is most easily done by copying the appointment to the clipboard (Closed-Apple-5 plus saveport commands) and pasting it into the new day and time (Closed-Apple-6).

When you exit the Appointment Calendar, the appointment is "armed." That is, it will trigger an interrupt when it comes due. When this occurs, whatever is happening in the Apple /// will stop and the Desktop Main Menu will appear. You may then enter the appointment calendar to view the appointment details, or you may simply press Escape to return to the work at hand. The system will remain in interrupt status for up to 90 minutes. This allows a person to be away from the computer for a time and still be reminded of the appointment.

As presently written, the Appointment Calendar will not permit the arming feature to be disabled. This, it would seem, is a weakness in the program. If one were printing a lengthy report using a data base such as Keystroke, printing could be delayed by the occurrence of an armed event. Likewise, if one is involved in work which requires a lot of disk I/O, the occurrence of an armed event might pose some dangers. At the very least, it would be inconvenient to have an armed event occur in the middle of a save to disk. For these reasons, it is suggested that future versions of Desktop allow the user to toggle the arming feature on or off. I, for one, do not feel completely comfortable setting appointments in the Appointment Calendar unless I can disable the arming feature at times when it might interrupt critical work.

There are several other caveats which apply only to Catalyst users, primarily because Catalyst uses non-standard Console I/O routines. When using Catalyst, the keyboard is disabled when the Catalyst menu is displayed. Therefore, if an armed event occurs while in the Catalyst menu, it is not possible to go to the Appointment Calendar; the Desktop Main Menu may be cleared only by pressing Escape. Also, when exiting

a program to the Catalyst menu by using Double-Apple-Escape, there is a possibility that the day's appointment events will not be handled. To avoid this possibility, *ON THREE* recommends that you re-enter and then exit the Appointment Calendar to re-arm that day's events.

The Calculator

The Calculator is certainly a convenience. For years, I have had a little hand-held calculator on my desk. When not in VisiCalc or some other program with a built-in calculator, I had to resort to my tired little HP-10 with its expensive and hard-to-find 1.5-inch thermal paper tape. No more! The Desktop Manager offers a powerful calculator which is available from within any program—even VisiCalc. The calculator may be invoked directly by pressing Closed-Apple-3, or by selecting it from the Desktop Menu. By pressing Open-Apple-T, you can have a "paper tape" to view your transactions. This permits looking at the last 21 entries in the calculator.

If you wish, you may press Open-Apple-P and send your calculations directly to the default printing device. This permits all calculations to be viewed, and works exactly like a calculator with a paper tape. Each entry is transmitted to the printer with the appropriate sign as it is entered.

As with most hand-held electronic calculators, you must anticipate the sign or function to be entered. Many people accustomed to using adding machines have a tendency to press Enter or Return after each number is keyboarded, and then the total or = key. With the Desktop Calculator, this will produce an erroneous result. If you were to enter 8+8+=, for instance, the answer would come out 32. If you enter 8+8=, the answer is 16. If a number is entered and Return pressed, the number is added to the accumulator. Each time you press Return without entering a number, the accumulator is added to itself.

The Calculator has a memory function which permits temporary storage of numeric information. A value is added to the memory register by pressing Open-Apple-+ (or Open-Apple-=). Memory may be recalled

by pressing Open-Apple-R. Unlike the totals which may be in the accumulator, the memory register is saved for future use when you exit the Calculator. If you quit with a value in the memory register, it will still be there the next time you boot your machine. Therefore, unless you have a use for the data stored in the Calculator's memory, it is a good idea to recall the memory when first invoking the Calculator, and delete whatever might be there. Memory is deleted by recalling the value in memory, changing its sign by pressing N (no Open-Apple, or else you will get a Logarithm), and adding it to itself in memory by pressing Open-Apple-+.

When multiplying or dividing, one must be cautious of the order in which expressions will be evaluated. Since it is not possible to enclose portions of an expression in brackets in order to define the order of evaluation, it may be necessary to divide a complex calculation into smaller parts that may be evaluated separately, in order to avoid causing an error. Speaking of errors, there are several errors which will put the Calculator out of action temporarily. Try dividing by 0. Fortunately, the system does not crash as one might expect. This error and others may be recovered from by pressing Open-Apple-C.

Other interesting features are the mathematical constants and built-in trigonometric and standard functions. Pressing P gives the value of Pi to 16 digits of accuracy. Pressing E gives the value of e (2.71828. . .). You can raise a number to any power (well, almost any power) until you get a mathematical overflow (again cleared by Open-Apple-C). You can view the displayed number in hexadecimal (Open-Apple-H) or binary (Open-Apple-B) format if you like. (You can't manipulate the number, just look at it.)

For those accustomed to using a standard adder, the Calculator may take some getting used to. Once you become accustomed to using the Calculator, however, you will find it to be an invaluable tool. Its availability from within any program is a convenience we Apple /// users have been too long without.

Text Pickup/Pasting

Most word processing programs permit block-loading of text from a file on disk to any place in the document in memory. Desktop Manager provides a utility which may be more convenient to use under some circumstances. Text is cut from a document and placed on the Clipboard. The Clipboard is similar to the Notepad, except that it is a single note which holds the most recent material pasted to it. The Clipboard may be viewed by selecting the Desktop Setup option and then selecting Show Clipboard. Whatever is on the Clipboard can be pasted into any word processing document, and into records or documents created in many other programs. In a data base, for instance, you may have to enter the same information repeatedly. Storing the information in the Clipboard permits its entry into each record with only a single keystroke.

As originally delivered, the Text Pickup/Paste option would not work with Word Juggler. I am pleased to report that it now works just fine. Text pickup is initiated with Closed-Apple-5. In order to implement text pickup/pasting, direct access must be enabled. After pressing Closed-Apple-5, you identify the "Saveport" by positioning a cursor at the start of the block you wish to save, pressing Open-Apple-B (for begin), moving the cursor to the end of the block and pressing Return. A cursor will then zip through each of the lines as if the material were being typed with great speed. Pressing Escape returns the screen to normal and you may continue with the work at hand. When you wish to paste the information, simply move the regular cursor to the

starting point for your text and press Closed-Apple-6. The mighty cursor reappears and zips through your document, depositing the text from the Clipboard as it goes.

When using text pickup and paste, you have a choice of several end-of-line options. If you want the text to appear just as you see it on your saveport, you want a carriage return to be picked up. If, on the other hand, you desire word wrap when you paste your text into its destination, you wish a space at the end of the line instead of a carriage return. If you intend to paste the information into a field in a data base record, you may not want any end-of-line character to be picked up and pasted. When you mark the beginning of the saveport (Open-Apple-B) and move the cursor away, you will see a marker. The appearance of the marker indicates the end-of-line option which is in effect. The options are as follows:

- NORMAL + Margin character RETURN will be added to each line.
- INVERSE + Margin character SPACE will be added to each line.
- NORMAL * Margin character is RETURN, but will not be added.
- INVERSE * Margin character is SPACE, but will not be added.

The following text was picked up and pasted from Advanced VisiCalc:
Text to be picked up:

Now is the time
for all good men

Following is a table showing the effect of the various options when picking up the above text:

Effect of text pickup options:

Ctrl Char	Cursor Condition	Text as pasted
OA-M	Inverse \$	Now is the timefor all good men
OA-M	Normal \$	Now is the timefor all good men
OA-M	Inverse \$	Now is the timefor all good men
OA-M	Normal \$	Now is the timefor all good men
OA-CR	Normal +	for all good men
OA-CR	Normal \$	Now is the timefor all good men
OA-CR	Normal +	for all good men
OA-M	Inverse +	Now is the time for all good men
OA-M	Normal +	for all good men
OA-M	Inverse +	Now is the time for all good men
OA-CR	Inverse \$	Now is the timefor all good men
OA-CR	Inverse +	Now is the time for all good men

Open-Apple-M toggles between a carriage return and a space for a margin character. Open-Apple-Return toggles between the margin character to be added or not be added during text pickup. This, admittedly, is somewhat confusing. It is especially so in Word Juggler, since the characters from the Desktop are all in inverse video. (Word Juggler uses an inverse screen which it re-inverses within the program itself. Word Juggler text will appear normal, but characters from any other program superimposed on the Word Juggler screen will appear in inverse video.) This means that the cursor will appear just the opposite of the description in the manual. Another problem is that you don't know what the pickup option is until you set the beginning of the saveport. If the presence or absence of a carriage return at the end of the line is critical to an application, there could be some trial and error until the correct

option is selected. The default condition is to append a carriage return at the end of each line (Normal +). In the examples above, you will note that the Normal + cursor (the default condition) shows only the second line of the text which was picked up. This is because a carriage return is appended to the line and transmitted in pasting. Since VisiCalc is confined to a single-cell entry for a text paste, the first line was transmitted and then overwritten by the second line.

When picking up text, Desktop generates its own carriage return. Any carriage return encountered within the saveport is simply regarded as a character to be picked up and pasted. Desktop permits you to select an asterisk (default) or a space to insert in place of the control character. The character to be inserted can be changed by typing Open-Apple-Space. This approach presents a serious flaw. While the condition of the marker at the beginning of the save-

port will tell which end-of-line options are in effect, there is no way to tell whether an asterisk or a space will be used to represent control characters. If the Desktop option to generate a space instead of a carriage return (inverse +) is in effect, the default option for picking up control characters will cause a line of text to show an asterisk wherever there was an end-of-line marker within the saveport.

Text to be picked up:

Now is the time[CR]
for all good men[CR]

Text as pasted:

Now is the time* for all good men*

If a carriage return were inserted by Desktop at the end of each line, the text would be pasted as follows:

Now is the time*
for all good men*

Open-Apple-Space seems to be ineffective in Word Juggler, although it apparently works in other programs.

ON THREE Presents . . .

Sandman

\$29.95

plus \$2 shipping and handling

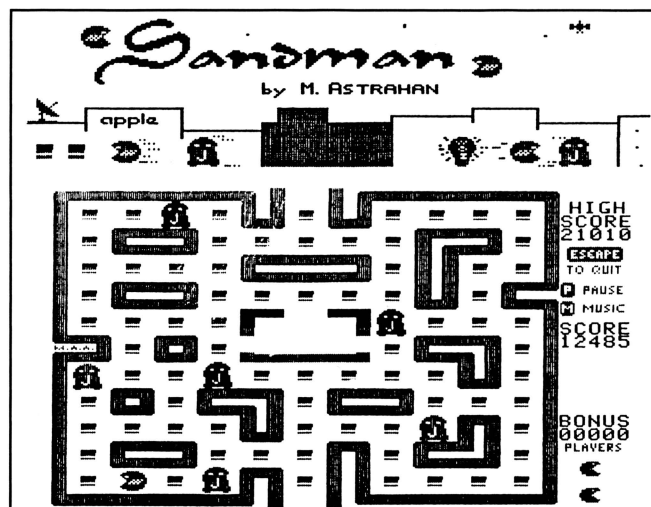
a new multi-level arcade game by Mel Astrahan

- Use with joystick, keyboard or mouse
- Can be run as a Desktop Manager background module

The objective of SANDMAN is to score as many points as possible. Salvage all of the Apple /// parts discarded throughout the halls of Apple's labyrinthian research lab to receive points. WARNING! The lab is haunted by the ghosts of JOBS. . . if they catch you, you're done for!

Your only weapon against the JOBS is to find the WOZ who wanders about the lab peaking in on various projects. For a short time following a meeting of SANDMAN and WOZ the JOBS turn blue and may be exorcised if you can catch them.

"—Brilliant, colorful and fast moving, Sandman will provide hours of fun."



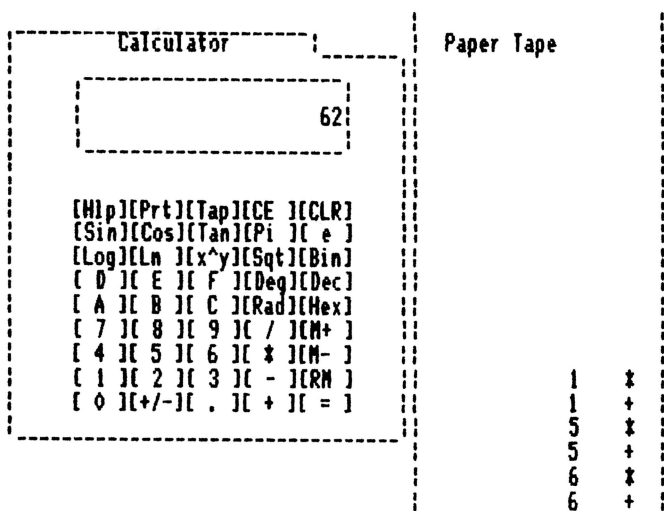


figure 1

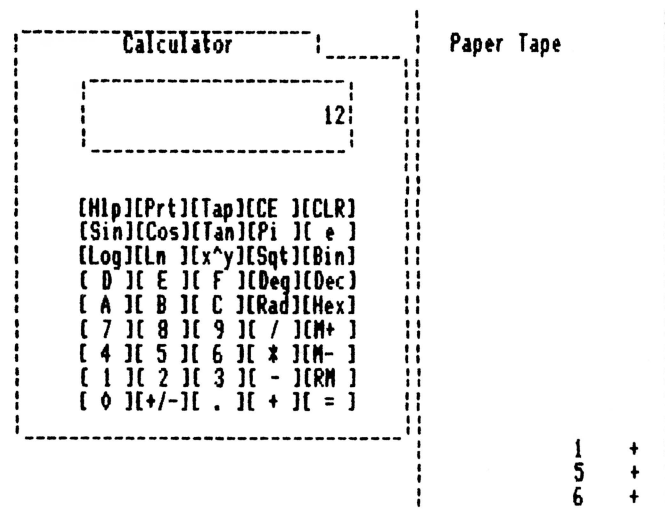


figure 2

When a carriage return is encountered in Word Juggler, an asterisk will be transmitted, no matter what. I toggled Open-Apple-Space until blue in the face, with no result.

Of all the options in the Desktop Manager, the selection and transmission of margin characters will be the most difficult to master. It would be most helpful if the cursor could show the current option when Closed-Apple-5 is invoked. Then it would be a simple matter to select the option to suit your current needs. It would be helpful to be able to see which option is in effect to represent control characters in the text pickup. Also, it would be better, in my opinion, to use a space as the default, rather than an asterisk.

Text pickup permits you to use the Calculator to add columns of figures in a word processor and paste the result back into your document. To do so, you initiate text pick-up and set the beginning of the saveport at the upper left of the column of figures to be added. You set the end at the lower right. After picking up the figures, you invoke the Calculator and press Closed-Apple-6. The figures will paste through the calculator. After the last figure has pasted through, the accumulator will show the total.

For this to work correctly, the options to add a carriage return and insert a space character to represent control characters should be in effect. I tested text paste with the Calculator

while in VisiCalc and it works as stated. However, in Word Juggler some curious things happen. Desktop always reads the Word Juggler end of line marker as an asterisk. Therefore, if you were to add the following columns and include the end of line markers in the saveport, you would get the following:

Text to be picked up: Text as Pasted:

1[CR]	1*
5[CR]	5*
6[CR]	6*

Calculated result: (see figure 1)

It can be seen that we have actually added 1+25+36. Each number was multiplied by itself and added to the accumulator. This is because the Calculator interprets the asterisk inserted to replace the end-of-line marker as a multiplication sign. If the end-of-line markers are not included within the saveport, the following is the result:

Text to be picked up: Text as Pasted:

1	1
5	5
6	6

Calculated result: (see figure 2)

ON THREE Presents...

I ♥ My Apple ///

T-Shirt Bonanza!

• Bright t-shirt colors for sunny days

- yellow
- blue
- white
- beige

\$11.95 plus \$3 s/h

• Maintain your bod like your ///

I ♥ My /// Sweat Shirts

- yellow
- blue
- white
- silver

\$18.95 plus \$3 s/h

sm med lg x-lg

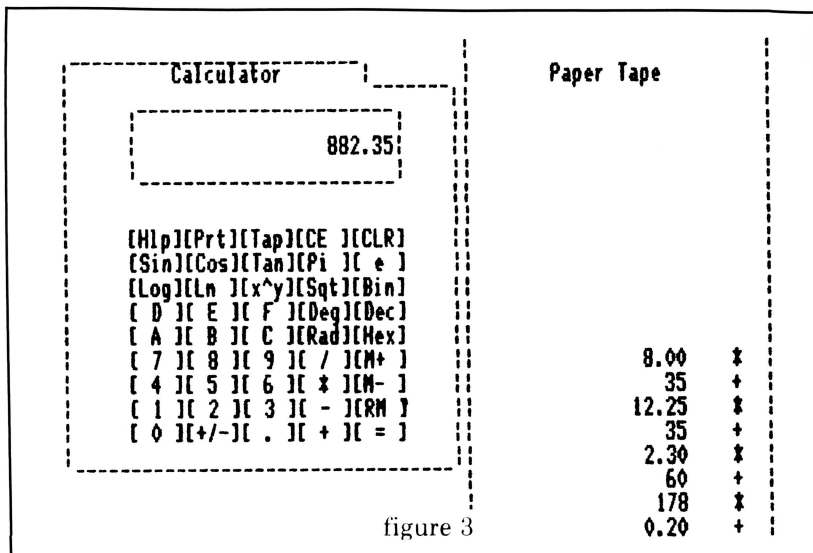


figure 3

In order to paste to the Calculator from Word Juggler, you must be sure that you do not include any end-of-line markers within the saveport. One more thing. If your end-of-line option is not set to add a carriage return (default), the numbers will be concatenated instead of added. In such a case, the accumulator would have read 156.

Another interesting aspect of the cut and paste feature with the Calculator is the ability to include calculations. The following columns show a number of units times a rate per unit:

Units		Rate
8.00	x	35
12.25	x	35
2.30	x	60
178	x	.20

The two columns can be picked up and pasted through the calculator with the following result:

Calculated result: (see figure 3)

I now use Text Pickup/Pasting to prepare my monthly client billings. Billing information is accumulated in the note reserved for each client. At the end of the billing period, client billing information is pasted from the note to the billing template in Word Juggler. The column of figures is pasted to the Calculator and the result pasted back to the billing template. Voila—a bill all totaled and ready to be printed and mailed. It takes less than a minute!

Disk Manager

Disk Manager was installed after this article was begun. Installation consisted of copying a set of files to the Desktop subdirectory in .Profile. This feature has proven to be most convenient. The ability to copy files is but a keystroke away. Now I can back up files to floppies without having to get into System Utilities. Likewise, the ability to obtain a complete listing of the files on a disk or in a directory is a tremendous advantage. When the listing is on the screen, pressing Open-Apple-H will print the screen to the default printing device.

The Disk Manager is described as a sort of mini-System Utilities. The program allows both file and device handling commands. When listing a directory or a disk, you can indicate that you want to see only directories by entering, for example, .D1 -D or .PROFILE -D. If you are only interested in looking at files as opposed to directories, you enter .D1 -F. Entering the volume in the standard manner will produce a complete listing of everything on the volume. The directory shows the creation and modification dates of each file or subdirectory; however, it appears that the creation date is labeled as the modification date and vice-versa.

When copying files, it is not possible to use wild cards. You may operate on only one file at a time. Still, it beats quitting to System Utilities for just a few files to copy. I find that the ability to copy files is a great boon,

especially when using VisiCalc. My practice had previously been to save to a floppy after saving to the hard disk when in Word Juggler. However, that is not practical in VisiCalc because of the time it takes that program to write a file to disk. Now I can back up my large spreadsheets without having to enter System Utilities. It is convenient and saves time.

One more thing on copying files. There is not as much room to enter pathnames as there is in System Utilities. Disk Manager does not recognize system prefixes, and the complete pathnames of the source and destination files must be entered. Exceptionally long pathnames could pose a problem.

The most useful features of Disk Manager, in my opinion, are the ability to list files, copy files, and format disks. I may occasionally delete single files while in an application, but generally I delete them in batches every week or so. One will not often have to copy a volume when in an application, but, on occasion, the ability to do so may be most convenient.

In any event, it works, as do the formatter and the other features of the system. Operation of the Disk Manager is extremely straightforward, and should pose absolutely no problem to anyone who is accustomed to using the Apple ///.

The ASCII Chart

The ASCII Chart is another module which arrived after I started working on this article. Installing the ASCII Chart consisted of copying only one codefile. The chart is in two pages. The first page lists all 128 ASCII characters with their decimal and hexadecimal equivalents. The second page lists the correct keypresses for the 32 non-printable ASCII characters. This is a handy thing to have available when trying to figure out which characters to place in a printer control string when using VisiCalc or Keystroke. Page two could be made more helpful by including the name of each non-printing character. For instance, it would be convenient to see at a glance that CR is the character represented by decimal 13 or

hexadecimal 0D, and keyboarded by typing CONTROL-M. Page two would have to be reformatted somewhat to do this.

The Desktop Setup

The Desktop Setup permits easy modification of certain key items. It permits setting the default printing device, enabling or disabling direct access, and sending a line feed to the printer after a carriage return. If you find yourself printing in double space, you disable the line feed by highlighting this menu item and pressing Return. Desktop Setup also permits viewing the clipboard and obtaining help information on the Text Pickup/Paste function.

In most options, pressing Open-Apple-M permits moving the Desktop Window to any convenient place on the screen. When this command is used to move the Calculator, the Calculator will return to its default position if the Paper Tape is toggled on.

Summation

No software is perfect, and Desktop is no exception. There are a few weaknesses in the program. When using the appointment calendar, I would like to be able to disable the arming feature when I do not want my work interrupted.

When pasting from one application to another, I would like to be able to see what end-of-line options are in effect and what character will be used to represent non-printable control characters.

In Disk Manager, I would like to be able to use wild cards and defaults for file copying. There are a few peculiarities when using the system with Word Juggler, such as inverse video. The software is not completely compatible with the Quark Spooler, but reordering the driver files solves the problem.

If full value is to be gained from Desktop, you should be running 512K. If my machine were still 256K, there would be a number of VisiCalc spreadsheets which would no longer fit in available memory. Also, Key-stroke would probably not run. My Desktop takes up 37K, and my SOS.DRIVER file is just about at maximum capacity.

The strengths of this program far outweigh the weaknesses. For the first time my Apple /// is capable of limited multi-tasking (aside from using the print spooler). I can access certain functions no matter what program I am running; I can pick up information from any application, and paste it into most applications; I can enter a note any time the spirit moves me, or check my appointments, or balance my checkbook. I now have a calculator which works with my word processing program. Billing and time management are now a snap.

Now that my revised Desktop is installed, I don't know how I ever got along without it! The most useful features for me are the Note Pad and the Calculator. My handwriting is terrible—so bad that even I cannot read it after it is a day or so old. However, I can type like crazy. Now, when I have to take a note during a phone call, I simply call up the Note Pad and keyboard the information directly. No more iddy biddy scraps of paper cluttering my desk!

At the price asked, Desktop is a steal! The crew at ON THREE is always willing and able to help out when there is a problem, and, best of all, they are always open to suggestion. It is my understanding that Bob Consorti is now working on an upgrade to the Appointment Calendar to permit disabling the arming feature. Desktop Manager is an innovative program which will enable Apple /// owners to realize, probably for the first time, the full potential of their machines. I find that I like it better each time I use it.



Editors Note:

Author Sollman appears to be mistaken in his perception that the creation and modification dates in the list files function of Disk Manager are transposed.

The "Creation" date is based on data provided by SOS (which System Utilities does not display) indicating when the file was first saved to the current media. It will not change until such time as the file is copied to another disk, while the "Modified" time will be updated with each subsequent file save to the current media.

That there is no transposition can be verified by entering a CAT command from Business Basic and comparing its output to that of Disk Manager.

Products & Services Available for the Apple ///

Current ON THREE Price List

Product	Software	Price	S/H
Disk Of the Month		\$14.95	\$2.00
Two or more DOM's		\$12.50 ea	\$4.00
/// E-Z Pieces		\$135.00	\$3.50
Apple Fortran /// (requires Pascal)		\$99.00	\$5.00
Selector /// program switching utility		\$99.00	\$7.00
Lazarus /// file recovery utility		\$49.95	\$2.00
Unprotect Driver		\$19.95	\$2.00
Desktop Manager		\$129.00	\$6.00
Desktop Manager/ON THREE O'clock combination		\$173.95	\$8.00
Disk Manager* (utilities)		\$44.95	\$3.00
Grafix Manager**		\$49.95	\$3.00
Macro Manager *		\$44.95	\$3.00
ASCII Conversion Table*		\$9.95	\$3.00
Draw ON ///		\$179.00	\$5.00
Draw ON /// Graphics Tablet Version		\$229.00	\$5.00
Fruit Machine (slot machine game)		\$19.95	\$2.00
Card Machine (blackjack game)		\$24.95	\$2.00
Fruit Machine/Card Machine combination		\$39.95	\$3.00
Sandman ** (arcade game)		\$29.95	\$2.00
Crossword Scrambler		\$19.95	\$2.00
UniDisk ///.5 disk and documentation only		\$50.00	\$3.00
Hardware			
ON THREE O'Clock		\$49.95	\$3.00
Game Card ///†		\$49.95	\$2.00
Apple ///e Mouse and Interface card (Use with Draw ON and Desktop Manager)		\$150.00	\$5.00
Apple /// UniDisk ///.5 (800K 3 1/2" disk drive w/ interface, driver & documentation)		499.00	\$10.00
MicroSci A3 140K Disk Drive†		\$225.00	\$6.50
MicroSci A143 560K Disk Drive†		\$325.00	\$6.50
Sider 10 (10Mb hard drive)		\$999.00	\$35.00
Sider 20 (20Mb hard drive)		\$1299.00	\$35.00
[Sider drives can be daisy-chained]			
B-Sider 1-Mb/minute fast tape backup for Sider (coming soon)†			
B-Sider (Sider, Trustor 10/20 backup)		\$845.00‡	\$35.00
B-Sider (Sider, ProFile backup)		\$895.00‡	\$35.00
B-Sider Two-Pack tapes		\$40.00‡	\$5.00
Discount when Sider, B-Sider ordered together \$50.00			
Xebec 9730 (34Mb hard drive)		\$1999.00	\$35.00
Reconditioned 512K Apple /// w/monitor ///		\$1148.00	\$50.00
512K Memory Upgrade, 256 to 512K (Remit \$449 and \$50 cash or \$60 credit is rebated when old board is returned)		\$399.00	\$10.00
256K Memory Upgrade, 128 to 256K, no rebate		\$200.00	\$10.00
Other Services and Products			
512K or 256K Upgrade installation (by appointment only)		\$50.00	
12-issue ON THREE subscription		\$40.00	
ON THREE back issues		\$5.00 ea	
Dust Cover for Apple /// and Monitor ///		\$11.95	\$2.00
Dust Cover as above plus ProFile		\$12.95	\$2.00
1 ♥ My Apple /// T-Shirts sm, med, lg, x-lg yellow, blue, white, beige		\$11.95	\$3.00
1 ♥ My Apple /// Sweat Shirts sm, med, lg, x-lg yellow, blue white, silver		\$18.95	\$3.00
1 ♥ My Apple /// Caps		\$5.95	\$2.00

*Background module for Desktop Manager
 **Runs as standalone or Desktop Manager module
 †Quantity Limited
 ‡Pricing tentative

California Residents add 6% sales tax.
 To order, call Toll-Free (800) 443-8877 / in California (805) 644-3514 or write:

ON THREE, Inc. Order Dept.
 Post Office Box 3825
 Ventura, CA 93006

Visa, Mastercard, American Express accepted. 3% Surcharge on American Express orders.

Items returned without prior authorization subject to 15% restocking charge.

Disk of the Month

What is the ultimate time-saver? Why *ON THREE's* Disk of the Month diskettes, of course. Why use your precious time typing in *ON THREE* program listings when they are available on diskette for just \$14.95 (plus \$2 shipping and handling) each?

Better yet, mix and match. Any two or more for \$12.50 each (plus \$4 total shipping and handling). Best bet: the works. Now is the time to start your collection of these program-filled diskettes from all issues of *ON THREE Magazine*. Bulk and group purchase rates are also available, call (805) 644-3514 to inquire about these super savers.

DOM #1—Extra Disk Space Plus!

This diskette contains all programs from volume I, nos. 1 and 2 of *ON THREE Magazine*. Included: Disk Pak1 with a program to give you four additional blocks of space on your data disks, and Disk Pak2, something you can't do without if you are a Pascal user, a convenient and easy way to list the files on a Pascal directory. Plus graphics and sound demos and more.

DOM #2—Changing Printer Characters

Here is an amazing program you won't want to miss. With it you can print to the Apple Dot Matrix and compatibles such as Imagewriter or ProWriter the same characters that are shown on your video display. Many special fonts, including fancy gothic characters, can enhance your printed output. And, it comes with complete documentation. Also on DOM #2 are the other programs from issue number 3, more graphic demos plus: a program to list files from an Apple II diskette without needing to enter emulation mode.

DOM #3—Redefining a Keyboard

This disk is jam-packed full with programs that appeared in Volume I, No. 4 of *ON THREE*, and includes an easy-to-use program that allows you to redefine any or all keys on the Apple /// keyboard. Of particular interest is the ability to reassign the "V" to be the delete key so it can be used on AppleWriter /// and other programs. Also included are all the WPL programs, a disk formatting utility, a graphics sketching tool and still more that we don't have room to list here.

DOM #4—Emulation Patch

Volume II, No. 1 had so many great programs it took two disks, DOM's 4 and 5, to hold them all. DOM 4 has all of the Pascal programs and the *Apple II Emulation Patch*, a way to use any Apple /// Font in emulation. Also included is the Pascal startup program for *Access ///* that lets you autodial. Another fine utility is a Pascal program and UNIT to permit calculations from within the Pascal environment. Demos haven't been forgotten either with *Radiate Graphics Demo* and *Beatles Music Demo*. To top things off, we have included a number of *Draw ON* pictures you can view with the program on DOM #5.

DOM #5—Access Draw ON

Here we find the BASIC startup program to autodial from *Access ///*, and Ben's *SUPER Slot Machine*, along with all of the VisiCalc and WPL programs, and the *Circling Graphics Demo* which will show some of the fantastic images that *Draw ON* can create, plus still more *Draw ON* pictures, along with the *Draw ON ///Picture Demo* which you use to view *Draw ON* pictures.

DOM #6—BASIC Lister Plus!

Straight from the pages of Vol. II, No. 2 is a program which will give you perfectly formatted listings of Business Basic programs, and a Pascal program to guide and assist you in selecting noises for animation and game programs. Both the *Pascal Noisemaker* and the BASIC lister come with full documentation. We've also tossed in still more *Draw ON* pictures and some new fonts, as well. You can use the *Draw ON* viewer from DOM 5 to see them.

DOM #7—Heap Good Stuff

From Vol. ///, Nos. 1 and 2 we present a BASIC heap sort routine and demo, *IMAGEHELPER*, a neat graphics utility to simplify graphic image design, and a menu-driven program to pre-select printer codes and parameters.

DOM #8—Directory Sorting

Here is what you have been waiting for, a complete BASIC and Assembly program to take those old chopped up directories and sort them out in just the order you want. Included also is *Clean.Heads*, a Pascal program which exercises your disk drive at cleaning time and writes a program to remind you when you last cleaned heads, and a simple utility to read a text file and find out what the contents are without having to write a program on the spot.

NOTICE TO SUBSCRIBERS

It's time to renew . . . if your subscription began with Vol. I, No. 4, this is your **last issue** of *ON THREE*.

Use the renewal form on page 21 or call toll-free (except in California) **(800) 443-8877**.

Rannings

richard/lavona rann

Apple Supports User Community

Yes, the headline is true even if it didn't make a big splash in the national multi-vendor computer press. Some interesting things have been happening at Apple and they directly impact the /// community.

Soon after the departure of Mr. Jobs, there appears to have been some very serious thinking about all the aspects of Apple marketing and its relationships with various communities. One thing someone at Apple realized was that the dealers either wouldn't or couldn't fill the communications void that exists between the average micro-computer user and a large company like Apple. This should not be too surprising in a world where most larger corporations, (even or maybe especially those using "blues") have rapidly expanding technical units with names like: End User PC Support Group, or Micro Technical Services.

The vast majority of Apple's market saturation has been in places that include smaller numbers of units like small businesses, professional users, educational institutions, and of course, homes. These users are not in a position to hire groups of support personnel and shouldn't have to. Certainly one could make a good case that Apple products are more user friendly and less in need of a gaggle of gurus. There is, however, still a need for ways to get technical answers and to keep up on what is going on.

All the way back to the days of the Homebrew Computer Club, micro-computer clubs had started providing mutual assistance with problems and established a tradition that has been taken up by thousands of user groups. The large company to "small" user void has been partially bridged by these groups. Apple has now begun to recognize that fact and has probably also recognized that brand loyalty is not limited to the cola market. So, what have they started?

One of the first steps was to gather together the leaders of a very few of the largest Apple user groups and ask for

their opinions on how user groups and Apple could most effectively work together. We are now beginning to see implementation of some of the ideas expressed at those early discussions:

A *user group forum* has been started on Compuserve as a new section of the popular MAUG™ SIG. It was set up with Apple's assistance and has had good support from Apple. Press releases from Apple are made available to this forum no later than to the press so that user groups can get the news and share it on a timely basis. Private areas are being set aside for registered user group representatives to discuss the intricacies of user group administration and to make it easy to swap information and articles for newsletters. So far a couple of user group conferences have been held that have included among others J.L.Gassee in attendance.

Apple has made its Technical Notes available to user groups. They have also established an 800 number that can be called to find a user group. The position of User Group Evangelist was established and filled with a very professional and knowledgeable Apple employee, Ellen Leanse. She knows the ins and outs of Apple and has already been of great assistance to user groups.

Apple has implemented a pilot to test the use of APPLELINK by user group representatives. This is intended to provide access to the technical experts within Apple to solve problems. Over the next few months, we hope to see the results of APPLELINK discussions shared on the User Group Forum, but that isn't Apple's job; it is the job of the user groups.

We said at the start, that this directly affected the /// community. Not too long ago, we officially visited Apple as officers of an Apple /// user group. To some of you, that may not sound too important. You might not know that the /// was an official anathema at Apple. Until recently, many Apple employees had what some referred to the "fear of Jobs;" they feared losing

their jobs if they publicly said anything about the ///. Please note the word "official" above, there are many people at Apple that use ///'s at home and yes, at work. We have always had good unofficial support. Now, however, we are not taboo, in fact, Apple is listening to what we feel future machines should be and what we think that they can do to lessen the pain of owning a good machine that has been officially obsoleted without having an effective successor.

It was a pleasant surprise to find that being unabashedly /// supporters did not exclude us from the official family of Apple User Groups. We even have reason to believe that our discussions with Apple will lead to good news for /// people over the coming months. It appears that Apple has started to realize that they had made good strides into the business/professional market with the /// and that they need to follow-up with both the community of loyal users and the product traits that caused the /// to be able to break into that market.

Don't expect miracles. Apple appears to be deluged with user groups. It seems that there are a nearly infinite number of groups out there all wanting something from Apple. There has already been a commitment made to add staff to the User Group Evangelist effort but our opinion is that the number of questions/problems/user groups is not limited and the benefits to Apple are. (To give you an idea, we recently saw a message from a fourth grade user group from a school, and one from the Apple Chestnut Block Family Users Group. Can you imagine how many tiny groups there could be?). We would expect Apple to have to channel their support efforts, maybe something like giving a different level of support to larger groups in exchange for those groups "adopting" smaller groups for support purposes. In any event, Apple is working on it and we are certainly glad to see that ///'rs are back in the family.



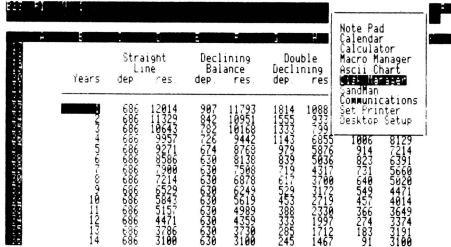
ON THREE Presents . . .

The Desktop Manager™

by Rob Turner and Bob Consorti

• The most complete and sophisticated desk accessory program ever written!

• For once and for all, unclutter your desk the Desktop Manager way!



Desktop Manager main menu, shown overriding a spreadsheet.

Running in the background, the Desktop Manager places all of the desk accessory utilities you ever wanted . . . Appointment Calendar . . . Notepad . . . Calculator . . . Disk Utilities . . . Macros . . . Graphics . . . Games . . . and more, into each program you own, just like they were part of it. Instantly available from /// E-Z Pieces, VisiCalc, AppleWriter, BPI, and all other programs, the Desktop Manager will clear your desk pronto.

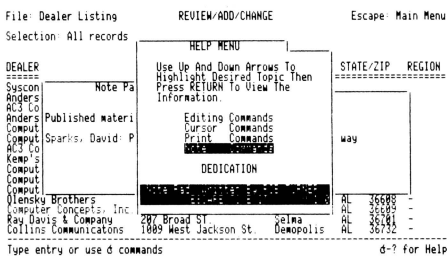
What is "Running in the background?" It is simply a program that, unlike most, "hides" from you. You are never aware of its presence, but when you need it, it is "Johnny on the spot," ready to serve you at the touch of a key. Selector /// is another example of a background program.

While word processing, have you ever needed to multiply two numbers? Perturbed because you have a few thousand dollars worth of computer equipment at your fingertips and still can't multiply two figures when you want to? Or, you're entering data in a spreadsheet and can't find either a scratchpad or a pen to jot down a note. While you're digging under piles of paperwork, you probably mutter something unprintable under your breath.

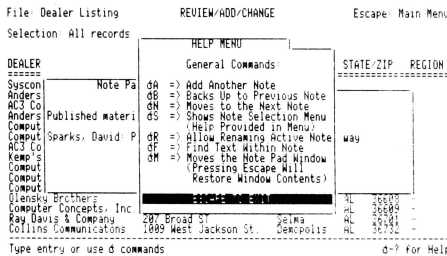
Perhaps you're entering text in a word processor document and decide it's time to do your first file save, but you can't remember if the file name you want to use already exists. Too bad the word processor has no provision to catalog a disk. Similarly, you may need to save a file and discover that you don't have a disk with enough room left on it. You have

plenty of blank, unformatted disks. If you exit the program to use the System Utilities to format a disk, all of your work will be lost.

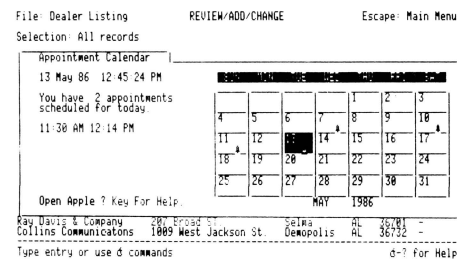
Does this describe your situation? How about clearing your desk of that old-fashioned calculator, the pens and paper, your appointment calendar and increase your productivity? The Desktop Manager from ON THREE will do these things and a great deal more. From within any program, a keypress will override your current application and display a window into the Desktop Manager. At this point you have the entire facilities of the Desktop Manager at your beck and call. You can pause whatever you are presently doing, and select any of the following modules:



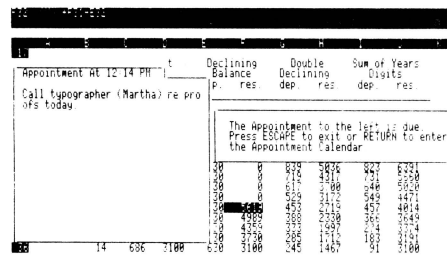
NotePad main help menu, superimposed on a NotePad memo and a database.



NotePad secondary help menu, superimposed on a NotePad memo and a database.



Appointment Calendar primary display.



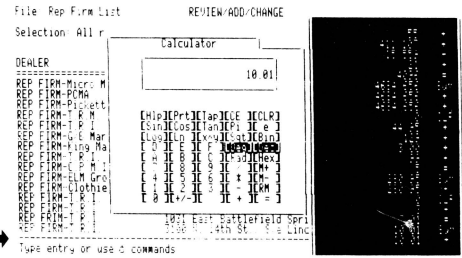
Appointment Calendar event, showing an appointment that has just come due.

The Note Pad: A powerful and easy to use work processor. It lets you jot down notes for quick reference while you are entering data or for later viewing. No need to type in a file name, The Notepad does it for you, automatically. Multiple pages per note, plus the sophisticated features of word-wrap, automatic repagination, copying and more gives you the power of a word processor—available in an instant—from whatever program you are using. Instant on-line help screens (a feature of all Desktop Manager modules) make The Notepad easier to use than many word processors.

The Appointment Calendar: A time scheduling productivity tool that allows you to set multiple appointments for any day through December 31st, 1999. These "Appointment Events" automatically notify you of your next appointment. From within any program, no matter what you are doing, the Appointment Calendar will pop up on your screen and display your next appointment. The day and week at a glance features show the appointments for a single day or an entire week. It also provides an easy way to set your system clock. Full help screens compliment this handy and easy to use perpetual calendar.

The Calculator:

An extremely powerful electronic workhorse. Full 16-digit accuracy and multiple functions like: SIN, COS, TAN, LOG's, natural LOG's, x to a power, square roots and more. In addition to the basic add, subtract multiply and divide, The Calculator features e, pi, degrees and radians, memory, base conversions from decimal to hex or binary and back again, a simulated scrolling paper tape, hardcopy printing and of course, on-line help screens.



The Calculator, with paper tape showing last calculations. →

The basic **Desktop Manager** comes complete with all the above features and more! For the first time, **Desktop Manager** lets you use a mouse from within any program, even those not designed for a mouse. You will be able to use the mouse to move the cursor and the mouse button doubles as the ESCAPE or RETURN key. The **Desktop Manager** also offers the ClipBoard for information transfer. With the ClipBoard, you can transfer information from one screen or program to another. Say you are using the Calculator to do some calculations and want to transfer the result into your word processor. You can simply cut from the calculator and paste it into your program. Likewise, you can move an entire section of text from your program to the notepad or vice-versa.

In addition, if you are running with Selector /// or Catalyst, you can also transfer directly from one application to another. After you have used the

ClipBoard to transfer some information, you can return to your previous application by simply pressing Escape, and the cursor will even be exactly where you left it.

With our no-nonsense installation program, a few simple keypresses will quickly install the **Desktop Manager** on all of your application programs. No need to use the System Configuration Program, Desktop Manager does it all for you, and automatically! All **Desktop Manager** Modules have movable windows that can be placed anywhere on the screen that they will fit.

The complete package includes all of the features described above and a 110 page User's Guide that shows clearly how to use each function of the various **Desktop Manager** modules. Priced at only \$129 plus \$6 shipping, the **Desktop Manager** is the best thing to happen to the Apple /// in a long, long time.

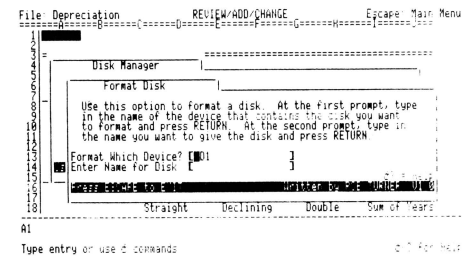
Disk Manager:™

Provides the most frequently used features of the Apple /// System Utilities program. Formatting disks, listing, copying, deleting and renaming files and more are all available, at the touch of a button. Never again will you have to lose data when you need to exit a program to format a blank disk. On-line help screens and standard **Desktop Manager** "Ease of use" makes the \$44.95 (and \$3 shipping) price a steal.

Optional Desktop Manager Modules Available Now!



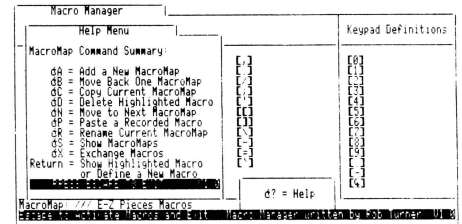
Main menu of the Disk Manager



"Format a Disk" option of the Disk Manager

Macro Manager:™

Allows you to define a single keypress as a series of keystrokes to be played back at your command. Our innovative Record Macro mode lets you record a series of keystrokes—over 2000, if you want—right while you type them in response to prompts, etc., in an applications program. After you have finished choosing from your applications menu, you can go right back to the Macro Manager and assign the previously recorded keystrokes to a single macro definition. Up to 50 different definitions can be assigned to a single macro set. Each set of macros is called a MacroMap™ and over 200 different MacroMaps, which can be modified with additions and deletions, etc., can be selected from an easy-to-use menu. The Macro Manager allows you to copy macros from one key to another and to exchange or re-assign macro keystrokes. All of this and more for only \$44.95 plus \$3 shipping.



The Macro Manager's help menu, displayed over a MacroMap™

ASCII Chart:

Lists, in an easy to understand table, the decimal and hexadecimal values for all ASCII characters. A second screen features a keypress table that shows exactly which keys to press for different ASCII codes. The keypress table can be a lifesaver when you need to know what commands to send to a printer, or to an applications program, to enable different printing modes such as bold, italic, compressed print, etc. Only \$9.95 plus \$3 shipping. As an extra bonus, the source code is included on the disk.

Mr. SandMan:

A fast-moving, multi-level, full-color arcade game that you can play at any time. As a **Desktop Manager** background module, whenever you need a break from the tedium of entering data into your present application, you can instantly "take five" to team Mr. SandMan up with the wandering WOZ and eat up those nasty JOBS in this challenging and amusing game. For only \$29.95 and \$3 shipping, you will receive both the **Desktop Manager** and stand-alone versions. The standalone version allows you to play Mr.SandMan even if you don't have the **Desktop Manager**.

Coming Soon to a Desktop Near You!

Grafix Manager:™

Allows you to send graphics images to your printer from within any program. You can combine text and graphics images on the same piece of paper. You can insert a picture in the middle of your word processing document. Features automatic rotation, and image enlarging and/or shrinking. Medical image processing techniques allow scaling changes without loss of clarity in the image. Supports Apple DMP-ImageWriter, Epson, IDS, OkiData, Pkaso, Pkaso/U and many more. Available about July.

The **Desktop Manager** requires an Apple /// with 256K or 512K of memory and an external disk drive of any type or capacity. The Appointment Event feature requires an **ON THREE O'Clock**, an Apple Clock or compatible Apple /// clock chip. The **Desktop Manager** uses between 32 and 40K of memory.

Desktop Manager	\$129.00
plus \$6 s/h	
Disk Manager	\$44.95
plus \$3 s/h	
Macro Manager	\$44.95
plus \$3 s/h	
ASCII Chart	\$ 9.95
plus \$3 s/h	
Mr. Sandman	\$29.95
plus \$3 s/h	

Order the main Desktop Manager and any two or more modules and get a 10% discount.

ON THREE Presents...

ON THREE O'Clock

*Now is the Time
for a real-time clock*

Believe it or not, a lot of folks have plain forgotten (or never knew) that the Apple /// was designed to operate with a built-in clock and that, with a clock chip installed, SOS will automatically time stamp and date all file saves.

When the Apple /// was first released, the supplier of Apple's clock chips could not supply a working clock. As a result, the /// was supplied without a clock of any kind. Now maybe you are wondering when you list a disk directory, how the time and date magically appears.

Not too long ago *ON THREE* developed a clock for the Apple /// which plugs in right where the never-released Apple clock was supposed to go, and for just \$49.95 plus \$3.00 shipping and handling, this easy to install, SOS-compatible clock can be yours. It comes with comprehensive instructions and *ON THREE's* limited six-month warranty and does not use any of your precious slots.

With an *ON THREE O'Clock* installed, whenever you save or modify any type of file, the current time and date will be added to the directory listing so you can always tell at a glance which file you last worked on, and when. But that's not all. Business Basic has two reserved variables, DATE\$ and TIME\$, which return, respectively, the current date and time to your BASIC program. These reserved variables can then be used whenever you want to print the date and/or time in a BASIC program.

Special Combination Offer

There's a great deal more you can do with *ON THREE's ON THREE O'Clock* if you also have our *Desktop Manager*. Whenever you want, you can display the current date and time on the screen with one keypress. Since this is a background function, you can be word processing with AppleWriter or entering data into VisiCalc, and with one keystroke you can obtain updated time information. In addition, you can use the *Desktop Manager's* Appointment Calendar to enter items you want to be reminded of and, like magic, when the time comes, no matter what you are doing, a message will appear on your screen to gently chide you via the *Desktop Manager* to make that phone call now, etc.

Now The Appointment Calendar is not the only feature of the *Desktop Manager*, you can read about the Calculator, the Notepad, and the others elsewhere, but since the *Desktop Manager* requires a clock, we want to offer you a money-saving deal. Purchased together, you can get the *ON THREE O'Clock* and the *Desktop Manager* for only \$173.95 plus \$8.00 shipping and handling. Now is the time to take advantage of this special offer.



Desktop Manager/ON THREE O'Clock Combo

\$173.95 plus \$8.00 shipping and handling

Create your own:

Football Pool

dennis p. beck

Pooling it

Here exists the perfect opportunity to demonstrate a typical example of how a program written to serve the specific needs of a single individual can—through publication in our pages—be exactly what another user is looking for. Football Pool serves well to typify an application written to serve that one individual's needs, yet through the listing presented here, is made available to the whole of the /// community.

Dennis Beck thought he solved a personal need in writing Football Pool, yet his program can go a long way toward meeting needs of many other individuals. If you have gone through the boring experience of ruling lines on a sheet of graph paper to create a grid for your office football pool, then you will appreciate what Dennis Beck has brought you: a BASIC program to automate and print out everything necessary to create a fill-in-the-names-and-scores form. But by printing his personal solution to a personal problem, we have enriched the activities of hundreds—perhaps thousands—of other Apple /// users.

All you need do is type in the BASIC program listing that appears on this and the following pages and presto, you have a program that can literally save you hours of time and effort. For those who have experienced the trauma of typing in programs and testing them only to find entry errors requiring rechecking and retyping of much of the data, we have an alternative: ON THREE's Disk of the Month. Each program printed in ON THREE will appear on a Disk of the Month which for a low price can save you the frustrations of typing in a program, checking it out and getting it to run correctly. An updated list of available DOM's will appear in the next issue.

```

10 REM +-----+
15 REM +
20 REM + Football Pool by Denis P Beck +
25 REM + 08/19/84 - Revised 02/12/86 +
30 REM +
35 REM + Copyright (c) 1986 by ON THREE+
40 REM +
45 REM +-----+
50 REM

```

IMPORTANT: The Invokable Module READCRT.INV must be on this disk with:

```

70 TEXT:HOME:PREFIX$="/FOOTBALL"
80 DIM box$(9,9),hnos(9),vnos(9),rule$(3
),amt(3),num(3):rule$(0)="Quarters"
90 rule$(1)="Halves":rule$(2)="Fourth Qu
arter":rule$(3)="Final":amt(0)=4:amt(
1)=2:amt(2)=1:amt(3)=1:num(0)=1:num(1
)=2:num(2)=3:num(3)=4
100 TEXT:VPOS=12:PRINT USING"79c";"F O O
T B A L L P O O L"
110 left=10:VPOS=top:HPOS=left:i=0:j=0:c
ount=0
120 GOSUB 730:GOSUB 140:GOSUB 1930:GOSUB
230:GOSUB 280:GOSUB 330:GOSUB 400:G
OSUB 540
130 GOTO 550
140 REM

```

GET TEAM NAMES

```

150 TEXT:HOME
160 VPOS=4:HPOS=1:PRINT"Enter name of te
am for horizontal position."
170 VPOS=6:HPOS=1:PRINT"Enter name of te
am for vertical position."
180 VPOS=4:HPOS=45:INPUT team1$:IF LEN(T
EAM1$)>22 OR LEN(TEAM1$)=0 OR LEFT$(
team1$,1)=" " THEN 180
190 VPOS=6:HPOS=45:INPUT team2$:IF LEN(T
EAM2$)>22 OR LEN(TEAM2$)=0 OR LEFT$(
team2$,1)=" " THEN 190
200 IF team2%=team1$ THEN 190
210 RETURN

```

220 REM

DISPLAY TOP TEAM

```

230 HOME:FOR hbar=1 TO 78
240 VPOS=1:HPOS=hbar:INVERSE:PRINT " ":
NORMAL:NEXT hbar
250 INVERSE:VPOS=1:HPOS=43-LEN(team1$)/2
:PRINT team1$:NORMAL
260 FOR vbar=2 TO 23
270 INVERSE:VPOS=vbar:PRINT " ":NORMA
L:NEXT vbar:RETURN
280 c=1:d=13-LEN(team2$)/2:e=LEN(team2$)
290 REM

```

DISPLAY SIDE TEAM

```

300 FOR vtitle=d TO e+vtitle-1
310 a$=LEFT$(team2$,c):b$=RIGHT$(a$,1)
:VPOS=vtitle:HPOS=2
320 INVERSE:PRINT b$:NORMAL:c=c+1:NEXT
vtitle:RETURN
330 REM

```

DRAW GRID

```

340 frame.horiz$="+-----+
+-----+
+-----+"

```

FOOTBALL POOL

		CHICAGO BEARS									
		8	7	5	1	9	6	4	2	3	0
2	DPB	MARY	PEG	BILL	FRED	FRED	BILL	PEG	MARY	DPB	
M	9	MARY	DPB2	ANNE	JOHN	JOHN	JOHN	JOHN	ANNE	DPB2	MARY
I	6	PEG	ANNE	DPB	DEC	DICK	JIM	DEC	DPB	ANNE	PEG
A	3	BILL	DEC	SCOT	MATT	CID	PIE	MATT	SCOT	DEC	BILL
D	0	FRED	LEL	JIM	CID	JOE	JOE	PIE	DICK	LEL	FRED
O	1	FRED	LEL	DICK	CID	JOE	JOE	PIE	JIM	LEL	FRED
L	5	BILL	DEC	SCOT	MATT	CID	PIE	MATT	SCOT	DEC	BILL
I	8	PEG	ANNE	DPB	DEC	JIM	DICK	DEC	DPB	ANNE	PEG
N	4	MARY	DPB2	ANNE	FRAN	FRAN	FRAN	FRAN	ANNE	DPB2	MARY
S	7	DPB	MARY	PEG	BILL	FRED	FRED	BILL	PEG	MARY	DPB

Pool for this game is - \$ 500.00
Cost per square is - \$ 5.00
Decision by: Quarters \$ 125.00

Disk Name: FOOTBALL
File: example


```

940 TEXT:GOSUB 230:GOSUB 280:GOSUB 330:G
OSUB 1790:flag=1:GOSUB 1180:GOSUB 18
60:GOSUB 400:GOSUB 540:GOTO 550
950 OFF ERR:GOTO 780
960 REM

```

```

1310 IF a$="N" OR a$="n" THEN TEXT:HOME:
END
1320 GOTO 1290
1330 REM
1340 REM

```

SAVE FILE

```

970 GOSUB 1910:PRINT CHR$(30):PRINT USIN
G"31a";"      Would you like to sav
e? ";:PRINT CHR$(5);:GET ans$
980 IF ans$="Y" OR ans$="y" THEN 1010
990 IF ans$="N" OR ans$="n" THEN TEXT:RE
TURN
1000 GOTO 970
1010 GOSUB 1910:PRINT USING"53a";"
      Save with what FILE name? [
      ] ";:WINDOW 35,24 TO 46,24:PRI
NT fil$;:HPOS=1:INPUT";fil$:TEXT:O
N ERR GOTO 1170
1020 IF fil$="" THEN fil$=file$:GOTO 105
0
1030 IF fil$="" THEN RETURN
1040 file$= PREFIX$+"FP."+fil$
1050 GOSUB 1770:OPEN#2,file$:CLOSE:DELET
E file$:CREATE file$,TEXT
1060 OPEN#2,file$:PRINT#2;memo$:PRINT#2;
check:PRINT#2;count:PRINT#2;team1$:
PRINT#2;team2$
1070 PRINT#2;do:PRINT#2;rule$(f):PRINT#2
;amt(f):i=0:j=0
1080 FOR a=0 TO 9:FOR b=0 TO 9
1090     IF LEN(box$(i,j))=0 THEN box$(i
,j)=" "
1100     PRINT#2;box$(i,j):i=i+1:NEXT b:
j=j+1:i=0:NEXT a:h=0
1110 FOR l=0 TO 9
1120     PRINT#2;hnos(h):h=h+1:NEXT l:v=0
1130 FOR m=0 TO 9
1140     PRINT#2;vnos(v):v=v+1:NEXT m
1150 CLOSE#2:OFF ERR:IF count=100 THEN L
OCK file$
1160 RETURN
1170 OFF ERR:GOTO 1010
1180 IF flag=1 THEN 1230
1190 REM

```

COUNTER

```

1200 IF LEFT$(initials$,1)=" " THEN PRIN
T CHR$(7);:RETURN
1210 IF LEN(initials$)=0 THEN PRINT CHR$(
7);:RETURN
1220 count=count+1
1230 VPOS=24:HPOS=1:INVERSE:PRINT USING"
###";count;:NORMAL:flag=0:RETURN
1240 IF check=1 THEN 1290
1250 REM

```

***** QUIT *****

```

1260 IF count=100 THEN GOSUB 1340:GOSUB
960:GOTO 1500
1270 IF count<>100 THEN GOSUB 960:GOSUB
1500:GOSUB 1910:GOTO 1290
1280 check=1:GOSUB 1340:GOSUB 960:GOSUB
1500:GOTO 1290
1290 GOSUB 1910:PRINT CHR$(30):PRINT USI
NG"49a";"      Would you like a ne
w board or file? (y/n) ";:PRINT CH
R$(5);:GET a$
1300 IF a$="Y" OR a$="y" THEN CLEAR:TEXT
:HOME:GOTO 80

```

RANDOM NUMBERS

```

1350 VPOS=2:HPOS=6:h=0
1360 FOR k=0 TO 9
1370     limit=10:random=INT((limit+1)*RND
(1))
1380     FOR hi=0 TO 9
1390         IF horiz(hi)=random THEN 1370
1400         NEXT hi:HPOS= HPOS+6:horiz(k)=r
andom
1410     PRINT USING"#";horiz(k)-1;:hnos(h
)=horiz(k)-1:h=h+1
1420     NEXT k:VPOS=2:HPOS=6:v=0
1430     FOR i=0 TO 9
1440         limit=10:random=INT((limit+1)*RND
(1))
1450         FOR ih=0 TO 9
1460             IF vert(ih)=random THEN 1440
1470             NEXT ih
1480             VPOS= VPOS+2:HPOS=6:vert(i)=rando
m
1490             PRINT USING"#";vert(i)-1;:vnos(v)
=vert(i)-1:v=v+1:NEXT i:RETURN
1500 REM

```

SCREEN DUMP TO PRINTER

```

1510 IF count=100 THEN GOSUB 1910:GOSUB
1550:GOTO 1290
1520 IF check=0 THEN 1540
1530 IF count<>100 AND flag=1 THEN RETUR
N
1540 GOSUB 1910

```

Hurrah for ON THREE!

ON THREE is America's leading Apple /// support group and independent producer of quality software and hardware products, and ON THREE magazine, America's leading Apple /// magazine is the official publication of ON THREE.

ON THREE magazine contains enlightening articles and programs about Pascal, BASIC, and assembler; technical hints, reviews, material for the novice and the advanced programmer, and in addition, you will always find news of exciting new and current ON THREE products, user group listings and hot line consultants, plus the popular and informative "Three Questions" readers' forum.

Chances are your ON THREE subscription is about to run out. If so, renew now and don't miss out on any of the interesting articles in future issues nor announcements of new and sophisticated ON THREE products. ON THREE Magazine, your bible of Apple /// information. Twelve issues for just \$40.00, back issues available at \$5.00, postpaid.

ON THREE (805) 644-3514
P.O. Box 3825, Ventura, CA 93006

Name _____
Address _____
City _____
State _____ Zip _____ Phone _____

enclosed \$ _____
 M/C Visa AE* NEW RENEWAL
number _____ exp. date _____
Signature _____
*3% surcharge on American Express.

```

1550 PRINT USING"50a";"      Hard Copy?
      (y/n)      ";:HPOS=25:PRIN
T CHR$(5);:GET ans$
1560 IF ans$="Y" OR ans$="y" THEN 1610
1570 IF ans$="N" OR ans$="n" AND check=1
      THEN TEXT:GOTO 1290
1580 IF ans$="N" OR ans$="n" AND count=1
      00 THEN TEXT:GOTO 1290
1590 IF ans$="N" OR ans$="n" THEN TEXT:R
      ETURN
1600 GOTO 1560
1610 ON ERR GOTO 1760
1620 INVOKE"readcrt.inv"
1630 HPOS=8:PRINT USING"47a";"To what pr
      inter? (RETURN alone, exits PRINT)
      ";:INPUT";name$:TEXT:IF name$="" T
      HEN RETURN
1640 OPEN#1,name$:OUTPUT#1:PRINT CHR$(27
      );CHR$(66);CHR$(3)
1650 PRINT"      F O O T B A L L      P O
      O L":PRINT
1660 FOR i=1 TO 24:VPOS=i
1670   FOR j=1 TO 80:HPOS=j:PERFORM read
      c(@value%):PRINT CHR$(value%);
1680   NEXT j:PRINT CHR$(13):NEXT i:RE
      M >> carriage return <<
1690 IMAGE 38a,$####.##
1700 IMAGE 20a,17r,1a,$####.##
1710 PRINT USING 1690;"      Pool for t
      his game is -",do
1720 PRINT USING 1690;"      Cost per s
      quare is -",do/100
1730 PRINT USING 1700;"      Decision b
      y:" rule$(f)," " do/amt(f):PRINT
1740 PRINT"      Disk Name: ";disk$:PRI
      NT"      File: ";fil$:PRINT C
      HR$(27);CHR$(66);CHR$(1)
1750 CLOSE#1:RETURN
1760 OFF ERR:GOTO 1610
1770 di$=LEFT$(PREFIX$,1):sk$=RIGHT$(PRE
      FIX$,1):di=LEN(di$):sk=LEN(sk$)
1780 is=di+sk:dis=LEN(PREFIX$)-is:disk$=
      MID$(PREFIX$,is,dis):RETURN
1790 REM

```

DISPLAY NUMBERS

```

1800 IF count<>100 THEN RETURN
1810 VPOS=2:HPOS=12:h=0:v=0
1820 FOR l=0 TO 9:PRINT USING"#";hnos(h)
      ;

```

DE CLASSIFIEDS

Classified rates: \$1 per word, \$25 minimum. Copy must reach us 60 days prior to cover date, e.g., October 1st for December issue, which would be mailed November 1st.

Subscriber Discounts: .50 per word, \$12.50 minimum, subject to the following restrictions:

- Non-commercial ads only
- No items valued over \$100

FOR SALE: 256K Apple /// system external drive software including Mail List Manager, VisiCalc ///, AppleWriter ///, Business Basic & Business Graphics. Paul (214) 956-2232.

EASY MONEY: Your de-classified ad here could bring you cash for surplus equipment or programs. Send ad copy with check to ON THREE De Classifieds, P.O. Box 3825, Ventura, CA 93006.

```

1830 VPOS=2:HPOS= HPOS+6:h=h+1:NEXT l:
      VPOS=4:HPOS=6
1840 FOR m=0 TO 9:PRINT USING"#";vnos(v)
      ;
1850 VPOS= VPOS+2:HPOS=6:v=v+1:NEXT m:
      RETURN
1860 REM

```

DISPLAY INITIALS

```

1870 top=4:left=10:VPOS=top:HPOS=left:i=
      0:j=0
1880 top=4:left=10:VPOS=top:HPOS=left:i=
      0:j=0
1890 FOR s=0 TO 9:FOR t=0 TO 9:PRINT box
      $(i,j);:HPOS= HPOS+3:i=i+1:NEXT t
1900 VPOS= VPOS+2:HPOS=left:j=j+1:i=0:
      NEXT s:RETURN
1910 REM

```

WINDOWING ON SCREEN

```

1920 WINDOW 1,24 TO 80,24:RETURN
1930 REM

```

RULES OF PAYMENT

```

1940 VPOS=10:HPOS=1:PRINT"How will winni
      ngs be awarded?"
1950 VPOS=12:HPOS=13:PRINT rule$(0)
1960 VPOS=13:HPOS=13:PRINT rule$(1)
1970 VPOS=14:HPOS=13:PRINT rule$(2)
1980 VPOS=15:HPOS=13:PRINT rule$(3)
1990 t=12:l=13:VPOS=t:HPOS=l:f=0
2000 inc=0:HPOS=1:INVERSE:PRINT rule$(f)
      ;:GET spot$:NORMAL:HPOS=1:PRINT rul
      e$(f);:spot=ASC(spot$)
2010 IF spot=13 THEN VPOS= VPOS:HPOS=1:I
      NVERSE:PRINT rule$(f):NORMAL:GOSUB
      2100:RETURN
2020 IF spot=27 THEN END
2030 IF spot=10 THEN VPOS= VPOS+1:inc=1
2040 IF spot=11 THEN VPOS= VPOS-1:inc=-1
2050 IF spot=8 OR spot=21 OR spot=32 THE
      N 2000
2060 f=f+inc
2070 IF VPOS>t+3 THEN VPOS=t:f=0
2080 IF VPOS<t THEN VPOS=t+3:f=3
2090 GOTO 2000
2100 VPOS=18:HPOS=1:PRINT"What is the PO
      OL amount? ";:INPUT do$:do=VAL(do$)
      :IF STR$(do)="0" THEN 2100
2110 RETURN
2120 REM

```

CATALOG OF AVAILABLE FILES

```

2130 vp=1:TEXT:HOME:VPOS=vp:HPOS=1:PRINT
      "Catalog of available files.":vp=vp
      +1
2140 OPEN#5, PREFIX$
2150 ON EOF#5 GOTO 2200
2160 i=i+1
2170 INPUT#5;a$: IF MID$(a$,3,4)<>"TEXT"
      OR MID$(a$,16,3)<>"FP." THEN GOTO 2
      170
2180 vp=vp+1
2190 VPOS=vp:HPOS=9:PRINT MID$(a$,19,12)
      :GOTO 2170
2200 vp=vp+2:VPOS=vp:PRINT"RETURN";:PRIN
      T" alone, will exit LOAD.":vp=vp+1:
      RETURN

```


One, Two, /// Forum

Subject to Block Outs

Dear Mr. Golding,

I recently received my June '86 magazine issue and as usual dropped what I was doing to read it. I miss the Block_Write column. I noticed my letter got published (I received a personal response quite some time ago, thanks). I now have a BASIC version dilemma. The 512 upgrade provides for BASIC 1.23 Ax, Selector's run-time BASIC is 1.23 Ax and *ON THREE's* response to my letter was to use 1.2 BASIC... What gives?

Things I'd like to see:

Review of networking systems currently available for the ///. I have Space Coast's system and am quite happy with it. (A side note here: as of this writing I have been unable to contact Space Coast for five plus weeks and want some more hardware and some questions answered. If you know what is going on with them I would very much appreciate some help. Please call me if you have any info.

I would like to know how many people are using a Space Coast Network. I would appreciate a call or a letter, postcard, etc. I would like to form a sort of user group for network owners/operators to share tips, problems and so on. I ran into a great deal of difficulty when I first installed my network three-four years ago and would be willing to share these problems/fixes. Also if Space Coast goes under, maybe we can keep each other afloat.

I would like to see a program editor for Business Basic similar to GPLE for the Apple][. I would like to know how to read/write a Business Basic text file using Pascal. This possibility is alluded to in the Pascal Programmer's Manual, page 183, in the fourth paragraph: "The formatting of a TEXTFILE is invisible to the Pascal program. In particular, this means that Pascal programs can process ASCIIFILES created in BASIC." I have only been able to do this with limited success for a random access text file created by BASIC. The problem I encounter is that record xx according to BASIC may end up being record xx+y if read by Pascal. I believe that the problem has something to do with how Pascal recognizes the end of a record. The problem occurs in the first record, which Pascal seems to split into several records. Note: I use record zero to store my file length in BASIC.

Per the *ON THREE* magazine, I would like to see some ads for other people's stuff, I know you have done so in the past. Maybe you would appear less self-interested if each issue wasn't so overwhelmingly full of *ON THREE* ads. I also feel that new products warrant a full page, but not after the first couple of months. Older products (although good) shouldn't chew up so much copy space.

The latest *ON THREE* magazine had an inquiry as to a sideways print utility. I'm awaiting more information on one being developed by Dan Wade of TAU.

In closing, I'd just like to say thanks. It's easy to knock the imperfections in a product and overlook the good points. If I were to list all of the good things about your magazine and products, I'd have a much longer-winded letter than I

already have. I hope your Apple /// support continues to be profitable for my own selfish reasons so that I can continue to get good /// support. I am very committed to the /// with eight machines to date and plans to purchase five more this fall because I firmly believe it is the best machine. I hope that I am not standing alone a couple of years from now.

Michael R. Schroeder
Micom Corporation
475 N.W. Eighth Ave.
New Brighton, MN 55112
(612) 636-5616

Thanks for your long and comment-filled letter. Because you had several interesting thoughts, we published a great deal more of it than we normally do. Block_Write will be appear again when Bob returns from Europe where he is celebrating his honeymoon and also attending a computer show in France.

BASIC 1.23 differs from previous versions in two important ways: The addition of the variable PROGPREFIX\$, the use of which can get you into occasional trouble if you are not aware how it works, and the availability of bank-switched memory to the BASIC program, which required a change in the method that program line links are set up; because of this, programs saved under 1.23 can not be loaded on earlier versions. The differences between 1.2 and 1.1 were to correct a number of bugs.

Based on your comments about the Space Coast System, we get the feeling you might also like to volunteer as a hot line consultant. If so, please let us know and we can add your name to the list. We have heard rumors they may be going under.

We considered the possibility of writing a GPLE type program editor for the /// but our impression is that interest is limited in BASIC programming. Such a program would be a large endeavor.

The problem you described of using in a Pascal environment a random access text file created by BASIC has to do, not with how Pascal processes it, but the fact that it is random access, rather than sequential. In a sequential file, each record is separated by a single carriage return. In a random file, each record is divided into from 1 to n fields, each field being separated by a carriage return. For example, if each record of your file is divided into five fields and you use record zero for housekeeping a single data item, Pascal will attempt to read field zero of record zero and fields zero through three of record one and consider it all as record zero, thus producing the offset you mentioned. The solution is simple: store four "dummy" fields in record zero and Pascal should be happy.

Our pages are always open to outside advertisers, and since they do create revenue, we'd be happy to see them too. The relationship between ON THREE and ON THREE magazine is symbiotic, since the affection and lavish attention we bestow on the magazine requires support from product sales, thus there exists the need to be self-serving and function also as a catalog for ON THREE products.

That's All She AppleWrote

Dear ON THREE,

We have appreciated your efforts, as well as those of other organizations and individuals, to keep Apple /// computer owners informed about available products and other items and features of interest for the ///. Several quick questions come to mind as we write.

1. Generally we are satisfied with AppleWriter /// and have not felt other word processing programs offer enough, if any, advantage to justify a change. But why does AppleWriter /// leave a space after a period to complete the fill-justification of a line instead of putting the space between words within the line and finishing the justified line with a period? What can be done about it?

2. Sometimes punctuation will end up all alone when the prior word has been underlined. This has occurred when we do not want to underline the punctuation immediately following an underlined word. To avoid this, we type the reverse slash immediately after the underlined word, then type the open-apple key and back arrow, then the punctuation key; however when the punctuation would be expected to end a fill-justified line, it may end up on the following line, even though enough space remained on the line above. What can be done about this?

3. Does your version of AppleWriter ///, permitting greater memory utilization, offered to complement your 512 memory upgrade, also include any enhancements which would eliminate some of the word processing idiosyncracies such as those described above? Have you considered a column in ON THREE to discuss solutions to program idiosyncracies?

4. We need the "password," or four-letter code to "unlock" the Denver Software Company program *Easy Executive Accounting System*, General Ledger, Accounts receivable and payable, model no. EAL3271R, serial no. 000636. We are told the company is out of business and a phone call to the number listed in the manual proved fruitless. Would you or your readers know how to obtain a password or otherwise get into the program? Are there any other problems other than lack of password? When we bought the program we knew what we were getting into and only paid enough to cover the cost of about the three diskettes which are supplied with the program. Any ideas?

John A Palenz
Wichita, KS

We'll offer a couple of guesses on your AppleWriter problems, but the real answers we'll leave to those readers more experienced in AppleWriter /// than ourselves. You might also try contacting one of our hotline consultants who specialize in word processing. Bear in mind, however, that any applications program (and we are aware that AppleWriter /// has unresolved bugs) is written with the most common usage in mind. It occurs to us that perhaps most users prefer to have their punctuation underlined. For example, following the rules of grammar, a period or comma at the end of a quoted phrase or sentence properly belongs to the left of the closing quote, a common error that people make. Thus in this context, the period (or comma or exclamation point) should be underlined along with the subject word.

The version of AppleWriter /// (4.0) that we supply with our 512 Upgrade contains a number of enhancements including variable column display width, and we know that some bugs have been fixed. We doubt that it solves your problem. We have also heard that it fails to count characters in a line correctly whenever control characters (such as to

change printer formatting) are involved.

This column is well suited to open discussions of program problems and possible solutions and we encourage our readers to use it. We hope also that some reader may come up with an answer for your accounting system.

Classic Prose

Dear Who?

Oh! How well I can remember the excitement of my purchase of the only business-oriented personal computer available on the market and made by the one company which symbolizes the American entrepreneurial dream-come-true, the Apple ///.

Now, three years later, the PC, the compatibles, the new business standard in personal computers in the business market place; IBM!

I read the predictions and I scoffed. I knew Apple would hold their own. I knew Apple would stand by their products. I knew Apple would support their systems. I knew Apple would.

I can cope with my classic machine. I can live without the updates to my classic software. I can continue to produce my client reports, my marketing correspondence and even my mailing labels with the same enthusiasm and excitement as when I first did three years ago. I can tolerate the manuals, although I no longer expect to gain knowledge or wisdom. I can pray that companies like Sun Data will be there when my machine, software or understandings fall short of current expectations.

I can write to a publication which repeatedly promises to have any and all knowledge of the Classic-///, and answers up-their-sleeves to any and all questions presented them, and software upgrades and developments that will keep the Classic-/// living and breathing far beyond the furthestmost recesses of time itself.

I have even renamed my machine the Classic-/// or C-///. When people have asked me what system I operate, I've answered "a C-///" and have found that after my explanation of the Classic-///, rebuilt and remanufactured by independents, enhancements and new software developed by independents, repairs to and parts for made available by independents, I find no need to mention the original manufacturer at all. I have to confess, though, that my two-year-old daughter founded the original rename of C-///-P-O" and then too, some credit must be given to the producers of "Star Wars."

I can now even ask a simple question to a simple problem:

What is entered in the seven-space compressed print code prompt in the accounting software by State-of-the-Art, using the ProWriter // printer by C. Itoh, and the C-/// with only an inboard and one outboard drive?

I'll stand by waiting. I'll anxiously check my P.O. Box daily. I'll even supply the envelope and postage. And, I know I'll receive the answer I've long been waiting for. But then again, I knew Apple would!

Andy Guardia
P.O. Box 141
Roseville, CA 95661
(916) 786-6916

Well, with a letter like that and with (as the writer indicated) carbon copies—or more likely, Classic-/// copies—to all Apple /// user groups, you should be flooded with replies. When you do get your answer, we hope you'll drop us a note so that all may benefit. Hmmm... Classic-/// really has a ring to it, doesn't it...

Printing with Desktop and Catalyst

Dear Gentlemen:

I have purchased your *512K Memory Upgrade* and the *Desktop Manager*. I purchased the upgrade to allow me to use Catalyst with BPI (which required more memory) and a number of other programs. I purchased Desktop Manager to use the calculator and to print out the tape while using AppleWriter. I have been unable to successfully do either and cannot print out the calculator entry and result on a parallel printer.

I want to put these programs on Catalyst and have the option of using .RAM, .Spool and .Spoolstatus. Also I want to be able to use two printers. Okidata 82 (serial) for BPI-checks and Okidata 92 (Apple parallel card) for all others.

Would it be possible to ship all of my programs to you, have you install them on a ProFile, back up the ProFile with the required number of disks, then return them to me with the programs and backup disks? I could use Backup /// to load the backup disks on my ProFile. If possible, please also advise the price.

Virgil E. Bolly
Sellersburg, IN

Desktop Manager has a "Desktop Setup" option which includes a specification for your printer driver filename. In your situation, where you wish to be able to use either of two printers, it is necessary to tell Desktop whenever you wish to change printers, since it provides for one only. In the Desktop Setup option, use open-apple-D to delete the current driver name and type in the new one. That's all there is to it. The Notepad has a similar option as well.

There should be no problem in interfacing to Quark's Spooler, but because Catalyst uses a number of non-standard routines, a couple of additional steps are necessary. The following information was provided by John Sollman, who is using the spooler with Desktop. (See also his review of Desktop Manager on page 5 of this issue.)

"Desktop was originally installed on my Catalyst boot diskette. After experiencing a problem in getting it to work, I moved the Desktop.Driver file to the first position in SOS.DRIVER. This placed Desktop.Driver ahead of .SPOOL and .QUARKCOM, which dynamically loads .SPOOLSTATUS.

"After receiving the corrected version of Desktop [standard release version as of May 1], I updated my Catalyst boot diskette according to the instructions contained on pages 6 through 10 of the documentation provided. Specifically I:

"Used option 3—Remove Desktop Manager Driver
"Created a SPOOL.STUFF file consisting of .SPOOL
"Concatenated SPOOL.STUFF to DESKTOP.DRIVER
and generated a new DESKTOP.DRIVER using System Utilities.

"Used option 2—Add Desktop Manager Driver

"Option 3—After completing the above, the SOS.DRIVER file on the Catalyst boot diskette showed only the following drivers in the file:

1. .DESKTOPMANAGER
2. .SPOOL

"Option 3 had apparently removed .DESKTOPMANAGER and all drivers which followed it. Option 2 had added the module, .DESKTOP.DRIVER which consisted of the above two drivers. The Desktop driver file is always added at the end of the driver chain. Option 3 presumes that .DESKTOPMANAGER is the last driver in the chain. If it is located anywhere else, the program

to remove it will take out that driver and all others which follow it.

"I repositioned only .SPOOL to follow .DESKTOP-MANAGER in the driver file. The driver .QUARKCOM, which dynamically loads .SPOOLSTATUS to one of the .UNUSED drivers is positioned just ahead of .DESKTOP-MANAGER. My .SPOOLSTATUS now seems to work just fine."

We hope John's information above will be sufficient to help you properly install Desktop. What you had asked of us is a pretty tall order and we suspect would be prohibitively expensive.

Visi-Found?

Dear ON THREE:

Regarding the letter in your January issue in which one of your readers wanted to know where to obtain a backup copy of Advanced VisiCalc for the Apple ///, we finally obtained a copy from Lotus Development Corp., 55 Cambridge Parkway, Cambridge, MA 02142.

Lotus Development acquired Software Arts last year and hopefully they will be able to help your readers. Their phone number is 617-577-8500.

Kristen Davis
Ray Products, Inc.
Parsons, KS

Thanks for the information. We were aware that Lotus had purchased all rights to Advanced VisiCalc, but had not heard that they were providing backup copies. If they are still doing this, we would appreciate hearing from any of our readers with recent experience.

Hard Disk Compatibility

Dear Bob:

I have an Apple /// with 256K, one external drive and ProFile with Catalyst. Most of the ProFile (5M) is filled with programs; I have to be careful where I place data and so I still use a lot of floppies. When indexing a book or a genealogical journal with several thousand names, I prefer AppleFile /// to PFS:File. AppleFile /// apparently stores data on the same hard disk (ProFile) as the program, and herein is my problem. I can work/store only one file on ProFile whereas I need to be working with three or four files or databases. If I add another hard disk, such as the 20m Sider, can I retain the AppleFile /// program on ProFile and send the data to the new hard disk? How is this done? Would it be preferable to put both the program and the data on the new hard disk? If so, how is this done? AppleFile /// has already been "Catalyzed;" will it transfer?

Please use English for your answer. Like so many others, I am a user of an Apple ///, not a programmer. All programs have a resemblance to Greek, insofar as I am concerned.

Darrell A. Russel
Florence, AL

Our familiarity with AppleFile is not sufficient to give you a full answer to your questions. What you must determine (and it should be in the AppleFile manual) is how much freedom it allows you in specifying different pathnames, e.g., /Profile/Applefile/datafile.1, /Profile/Applefile/datafile.2, etc. If it permits this, then you could have multiple data files on the ProFile or on a Sider or on a combination thereof. Generally, with a hard disk system, it is preferable to have the program and data files together on the same device. Our Unprotect Driver will allow you to restore your Catalyzed disks to their original state, at which time they can be transferred to a different hard disk. There are also other programs on the market that will do this.

Mouse Chips

Gentlemen:

I have installed a Titan /// plus //e board in my Apple ///, along with an Apple //e mouse. When I try to use the mouse with the supplied mouse diskette, the computer locks up. Titan suspects the 6502 chip in the Apple /// is not quite right for the mouse and suggests that a 65C802 might eliminate the problem. Can you comment on this?

If I purchase a UniDisk ///.5 can it have a standard Apple /// Drive /// daisy-chained to it? Since we have a lot of standard floppy disks, I would hope that by installing the UniDisk I didn't foreclose using my existing disks as I do right now. Also what happens when I run my protected State-Of-the-Art software which requires the use of my external drive.

Henry K. Strunk
Truxton, NY

It is our understanding that only the //e mouse demo program hangs, and that other mouse programs run without difficulty. It may well be that a 65C802 can fix the demo problem as well as others that may occur in the future. We have not yet heard from anyone who has tried this solution.

In most cases, the UniDisk functions just like an additional external drive, although as a device it is commonly addressed as .U1 rather than .d3. Because it is supplied with our own driver, and requires a separate interface card, a standard Disk /// can not be chained to it. It is our understanding that you may chain another UniDisk to it, however. We see no reason your external drive can not be used exactly as you are currently using it. While it may be possible to tell State-Of-the-Art that your external drive is .U1, we don't know for a fact if this is possible.

Free Thinking

Dear Val,

You were kind enough to publish my article "An Integrated Software Package—For Free" in the March issue of *ON THREE*. In the June issue, Mr. Roger Harrer's letter commenting on this article appeared.

My article presented some of the interesting aspects of adapting the capabilities of VisiCalc to do some rather unusual things, but more important, Mr. Harrer was kind enough to supplement my findings with some of his own experiences. His suggestion that the various templates be kept on one spreadsheet, if possible, and thereby eliminate some disk loading and unloading is very good. With a little advance planning, the use of one large template for various segments could also provide the means for locating text in their respective row locations. Keystroking can also be invaluable as Mr. Harrer suggests.

Finally, I completely agree that the suggested use of a spreadsheet for word processing should not be considered a replacement for conventional word processing software. There are just too many advantages to Word Juggler or AppleWriter. However, at times one faces situations that these standard word processors cannot handle and special techniques mentioned in the article may be put to use.

Above all, the fact that Mr. Harrer took the time to put his valuable comments into print is just great. It is only through such interchanges of ideas that full benefits can be accrued. There is no doubt that a reader is better off having both my article and Mr. Harrer's letter in hand.

John Lomartire
Westport, CT

Amen.



Apple /// Forever Conference Registration/Ballot

The proposed places and times are as follows:

- Los Angeles CAFeb. 7, 1987
- San Francisco CAFeb. 21, 1987
- Houston TXMar. 7, 1987
- Chicago ILMar. 21, 1987
- Cincinnati OHApr. 4, 1987
- Charlottesville VAApr. 18, 1987
- Westport CTMay 2, 1987

Vote for your three favorite Apple /// personalities:

- Daryl Anderson (Author of Power Keys)
- Mel Astrahan (Author of Draw ON ///, Graphix Manager, etc.)
- Tim Gill (Author of Catalyst, Word Juggler)
- Val Golding (Editor of ON THREE Magazine)
- Rupert Lissner (Author of /// E-Z Pieces, Quick File)
- Paul Lutus (Author of AppleWriter)
- Frank Moore (Editor of The /// Magazine)
- Dr. Wendell Sanders (Designer of the Apple ///)
- Rob Turner and Bob Consorti (Authors of the Desktop Manager, etc.) (It's a package deal)
- Other _____

Vote for your favorite three Apple /// programs:

- /// E-Z Pieces
- Access ///
- AppleFile ///
- Apple Speller
- AppleWriter ///
- BPI Accounting
- Catalyst
- Desktop Manager
- Draw ON ///
- Graphix Manager
- Lazarus ///
- Macro Manager
- Multiplan
- PFS: File, Report, Graph
- Power Keys
- Selector ///
- State Of The Art Accounting
- Think Tank
- VisiCalc
- VisiCalc Advanced Version
- Word Juggler
- Other _____

Apple /// Forever Conference Registration c/o ON THREE
4478 Market Street—Suite 701, Ventura CA 93003

Conference Date: _____

Name _____

Address _____

Telephone _____

Check Visa Mastercard American Express

Number _____ Expires _____

The Prompt Procedure

john e. cisar

Have you ever needed to get strings and characters on the screen fast? Have you ever wanted an alternate method to the PASCAL built-ins GOTOXY, WRITE, and WRITELN and the BASIC built-ins HPOS, VPOS, and PRINT? If so, the "Prompt" procedure is for you.

The "Prompt" procedure is an assembly language procedure designed to directly access the video screen's memory mapped display. This results in an average of 6 times faster displays. For example, in figure 1 a small PASCAL program that displays 24 rows of 80 characters each [a full screen] is shown. This program takes approximately 0.674 seconds to run.

Figure 1 is a short PASCAL program used to display on screen 24 rows of 80 columns each using PASCAL's built-in functions GOTOXY and WRITE.

Figure 2 shows the equivalent program using the "Prompt" procedure. Not only is the program smaller but it also only takes 0.109 seconds to execute. This is 6.183 times faster than using PASCAL's WRITE. Furthermore, you can display inverse characters with "Prompt" without any loss in efficiency. To do the same in PASCAL requires another WRITE statement [WRITE (CHR(18));]. Flashing displays can also be accomplished, but this concept will be saved for a future article.

Figure 2 is another short PASCAL program used to display on screen 24 rows of 80 columns each using the new "Prompt" procedure.

Apple uses a unique method of storing screen positions in memory:

Starting at memory location \$0400 is Screen Map 1. Starting at location

\$0800 is Screen Map 2. Map 1 contains all the odd screen column locations [i.e. 1,3,5, . . . 79] for rows 1 thru 24 and Map 2 contains all the even screen column locations [i.e. 2,4,6, . . . 80] for rows 1 thru 24. The rows are not stored consecutively in the Screen Maps. However, the rows are located in the same relative positions in each map. From \$0400 thru \$0427 is row 1 as you would expect, but row 2 is not at \$0428 but instead at \$0480! Rows are stored in each map in groups of three: 1,9,17 then 2,10,18 then 3,11,19 then 4,12,20 then 5,13,21 then 6,14,22 then 7,15,23 then 8,16,24. Each group of three rows occupies 128 bytes with the last eight bytes being unused. This breaks down to 40 bytes per row. Figure 3 contains a table showing this relationship (remember, each Screen Map has the same relative row layout—only the columns represented are different).

FIGURE 1

```
PROGRAM Test1_Of_Prompt;

TYPE
  Str255 = STRING[255];

VAR
  i : INTEGER;
  s : Str255;

BEGIN { Test1 Of Prompt }
  s := CONCAT('ABCDEFGHIJKLMNQRSTUWXYZ',      { build 80 }
             'abcdefghijklmnopqrstuvwxyz',    { character }
             '1234567890!@#%&*^&x()-_+=\|{('); { string }

  WRITE (CHR(28)); { clear the screen - set cursor at 0,0 }

  FOR i := 0 TO 23 DO { perform the screen update }
    BEGIN           { once for every line 0..23 }
      GOTOXY (0,i); { remember, GOTOXY uses zero }
      WRITE (s);   { relative coordinates }
    END;

  GOTOXY (0,0); { wait for user to press <RETURN> }
  READLN;     { to end the program }
END.
```

FIGURE 2

```
PROGRAM Test2_Of_Prompt;

TYPE
  Str255 = STRING[255];
  Display_Types = (Normal,Inverse,Flashing);

VAR
  i : INTEGER;
  s : Str255;

PROCEDURE Prompt (Display : Display_Types; Column,Row : INTEGER;
                 s : Str255); EXTERNAL;

BEGIN { Test2 Of Prompt }
  s := CONCAT('ABCDEFGHIJKLMNQRSTUWXYZ',      { build 80 }
             'abcdefghijklmnopqrstuvwxyz',    { character }
             '1234567890!@#%&*^&x()-_+=\|{('); { string }

  WRITE (CHR(28)); { clear the screen - set cursor at 0,0 }

  FOR i := 1 TO 24 DO { perform the screen update for lines }
    Prompt (Normal,i,i,s); { 1..24 - note that "Prompt" uses 1 }
                          { relative row numbering. Also note }
                          { you could have said "Inverse" in- }
                          { stead of "Normal". }

  GOTOXY (0,0); { wait for user to press <RETURN> }
  READLN;     { to end the program }
END.
```

The "Prompt" procedure is shown in figure 4. Note that in figure 2 [see above] the example is given which shows how to use the "Prompt" procedure in a PASCAL program. Also note that in the program a special Display__Types has been defined with the type values of Normal, Inverse, and Flashing. Normal and Inverse work just fine, Flashing will be addressed in a future article. Also note that you do not need to pass a variable to the

"Prompt" procedure. In other words you could have said "Prompt (Normal,1,i,'ABC...');" and you would have obtained the same results. Also, one other point of interest is what happens when you try to write a character at screen position 79,23 (0 relative). Any time you write a character in that position with PASCAL or BASIC built-ins, the screen will automatically scroll up one line. With the "Prompt" procedure this is no longer true.

The "Prompt" procedure will work in either PASCAL or BASIC and the savings are identical in terms of speed and code size. Remember a Pascal "Procedure" is functionally identical to a BASIC "Invokable Module." I hope this procedure and information helps those of you out there with applications that are somewhat hampered by your languages built-in screen display routines. Good luck and good computing!



FIGURE 4:
The source code for the "Prompt" procedure.

```

-----
; MACRO POP - pops 1 word off stack
-----
      .MACRO POP
      PLA
      STA Z1
      PLA
      STA Z1+1
      .ENDM

-----
; MACRO PUSH - pushes 1 word on stack
-----
      .MACRO PUSH
      LDA Z1+1
      PHA
      LDA Z1
      PHA
      .ENDM

Mask      .EQU      00FF

-----
; MACRO BITSOFF - sets bits to 0
-----
      .MACRO BITSOFF
      LDA #Z1^Mask
      AND Z2
      STA Z2
      .ENDM

-----
; MACRO ADD - add two numbers
-----
      .MACRO ADD
      CLC
      LDA Z1
      ADC Z2
      STA Z3
      LDA Z1+1
      ADC Z2+1
      STA Z3+1
      .ENDM

-----
; MACRO SOSCALL - performs a sos call
-----
      .MACRO SOSCALL
      BRK
      .BYTE Z1
      .WORD Z2
      .ENDM

```

FIGURE 3:
The internally mapped screen layout locations.

: : : : : SCREEN MAP 1 : : : : :			: : : : : SCREEN MAP 2 : : : : :		
LOCATIONS	ROW	COLUMNS	LOCATIONS	ROW	COLUMNS
\$0400 - \$0427	1	EVEN	\$0800 - \$0827	1	ODD
\$0428 - \$044F	9	EVEN	\$0828 - \$084F	9	ODD
\$0450 - \$0477	17	EVEN	\$0850 - \$0877	17	ODD
\$0480 - \$04A7	2	EVEN	\$0880 - \$08A7	2	ODD
\$04A8 - \$04CF	10	EVEN	\$08AB - \$08CF	10	ODD
\$04D0 - \$04F7	18	EVEN	\$08D0 - \$08F7	18	ODD
\$0500 - \$0527	3	EVEN	\$0900 - \$0927	3	ODD
\$0528 - \$054F	11	EVEN	\$0928 - \$094F	11	ODD
\$0550 - \$0577	19	EVEN	\$0950 - \$0977	19	ODD
\$0580 - \$05A7	4	EVEN	\$0980 - \$09A7	4	ODD
\$05AB - \$05CF	12	EVEN	\$09AB - \$09CF	12	ODD
\$05D0 - \$05F7	20	EVEN	\$09D0 - \$09F7	20	ODD
\$0600 - \$0627	5	EVEN	\$0A00 - \$0A27	5	ODD
\$0628 - \$064F	13	EVEN	\$0A28 - \$0A4F	13	ODD
\$0650 - \$0677	21	EVEN	\$0A50 - \$0A77	21	ODD
\$0680 - \$06A7	6	EVEN	\$0A80 - \$0AA7	6	ODD
\$06AB - \$06CF	14	EVEN	\$0AAB - \$0ACF	14	ODD
\$06D0 - \$06F7	22	EVEN	\$0AD0 - \$0AF7	22	ODD
\$0700 - \$0727	7	EVEN	\$0B00 - \$0B27	7	ODD
\$0728 - \$074F	15	EVEN	\$0B28 - \$0B4F	15	ODD
\$0750 - \$0777	23	EVEN	\$0B50 - \$0B77	23	ODD
\$0780 - \$07A7	8	EVEN	\$0B80 - \$0BA7	8	ODD
\$07AB - \$07CF	16	EVEN	\$0BAB - \$0BCF	16	ODD
\$07D0 - \$07F7	24	EVEN	\$0BD0 - \$0BF7	24	ODD

```

-----
; PROCEDURE Prompt (Display : Display Types; Column,Row : INTEGER;
; s : Str255); EXTERNAL;
-----
; This procedure displays a string 's' on the screen at position
; 'Column' and 'Row' with 'Display' attribute. 'Display' can
; be either Normal or Inverse.
-----
      .PROC Prompt,4 ; 4 words of parameters
      JMP Start_Prompt ; jump over storage, etc.

Return      .EQU      0000 ; non-enhanced
s           .EQU      00E8 ; enhanced
Row        .EQU      0002 ; non-enhanced
Column     .EQU      0004 ; non-enhanced
Display    .EQU      0006 ; non-enhanced

Offset1    .EQU      0008 ; work offset 1
Offset2    .EQU      000A ; work offset 2
Offset1_xByte .EQU    1609 ; xbyte of offset 1
Offset2_xByte .EQU    160B ; xbyte of offset 2

```

```

Counter      .BYTE    00      ; counter
Length       .BYTE    00      ; length of display string
Offset_Counter .BYTE    00      ; offset counter
Display_Mask .BYTE    00      ; mask for display
Screen1      .WORD    0400     ; address of screen page 1
Screen2      .WORD    0800     ; address of screen page 2
Num40        .WORD    0028     ; decimal 40
Num80        .WORD    0050     ; decimal 80

Start_Prompt PUP      Return    ; value of return address
             POP      s          ; address pointer for 's'
             POP      Row        ; should be 1..24
             POP      Column     ; should be 1..80
             POP      Display    ; should be 0..1

             LDX      Row        ; temporarily store row

             DEC      Row        ; to get in 0..23
             BITSOFF 00FB,Row    ; mask off all but last
             ; 3 bits

$01          LDX      #7         ;
             CLC                    ;
             ASL      Row        ; multiply row value by 128
             ROL      Row+1      ;
             DEY                    ;
             BNE     $01          ;

             TIA                    ; get original value of row

             CMP      #9         ; check if row in 1..8
             BPL     $02          ; no - goto label 2
             JMP     Compute_Offsets ; yes

$02          CMP      #11        ; check if row in 9..16
             BPL     $03          ; no - goto label 3
             ADD     Num40,Row,Row ; yes - add 40 to row
             JMP     Compute_Offsets ; ready to compute offsets

$03          ADD     Num80,Row,Row ; row in 17..24 - add 80

Compute_Offsets LDX      Column    ; temporarily store column
               BITSOFF 00FE,Column ; mask off all but last bit
               LDA      Column
               CMP      #0        ; is column odd or even?
               BEQ     $02        ; goto label 2 - even col.

$01          STX      Column      ; get orig. value of column
             CLC                    ; clear carry for division
             ROR      Column      ; divide column in half
             ADD     Row,Column,Offset1 ; compute offset 1
             ADD     Offset1,Screen2,Offset2 ; compute offset 2
             ADD     Offset1,Screen1,Offset1 ;
             JMP     Show_Characters ; ready to display

$02          STX      Column      ; get orig. value of column
             CLC                    ; clear carry for division
             ROR      Column      ; divide column in half
             DEC     Column        ; subtract 1
             ADD     Row,Column,Offset1 ; compute offset 1
             ADD     Offset1,Screen2,Offset1 ;
             INC     Column        ; add 1 to column
             ADD     Row,Column,Offset2 ; compute offset 2
             ADD     Offset2,Screen1,Offset2 ;

             JMP     Show_Characters ; ready to display

Set_Mask      LDX      Display    ; find out if display is
             CPI      #0         ; inverse or normal
             BEQ     $02          ; go to $02 - normal

$01          AND     #7F         ; set bit 7 off for inverse
             RTS                    ; return

$02          ORA     #80         ; set bit 7 on for normal
             RTS                    ; return

Show_Characters LDY     #0         ; initialize for indirect
               STY     Offset1_xByte ; use x-byte for s-bank
               STY     Offset2_xByte ; use x-byte for s-bank
               STY     Counter      ; initialize counter
               STY     Offset_Counter ; initialize offset counter
               LDA     #s,Y        ; get length of string
               STA     Length      ; store in length

$01          INC     Counter      ;
             LDY     Counter      ; get character to display
             LDA     #s,Y        ;
             JSR     Set_Mask     ; set character mask
             LDY     Offset_Counter ; throw character on screen
             STA     #Offset1,Y   ;

             LDY     Counter      ; does counter equal length?
             CPY     Length      ;
             BEQ     End_Prompt   ; yes - all done

             INC     Counter      ;
             LDY     Counter      ; get character to display
             LDA     #s,Y        ;
             JSR     Set_Mask     ; set character mask
             LDY     Offset_Counter ; throw character on screen
             STA     #Offset2,Y   ;

             INC     Offset_Counter ; increment offset counter

             LDY     Counter      ; does counter equal length?
             CPY     Length      ;
             BNE     $01          ; no - continue processing

End_Prompt    PUSH     Return    ; all done
             RTS
             .END

```

ON THREE presents...

The Unprotect Driver

\$19.95 plus \$2 s/h

ON THREE has not changed its position regarding duplicating copyrighted programs for profit or to give away, but since many Apple /// software products are no longer supported, owners of AppleWriter ///, VisiCalc, and VisiCalc Advanced Version are facing the problem of what to do when a diskette "crashes." After much consideration we decided to proceed with a product to solve that problem. *The Unprotect Driver* will allow you to make back up floppies of the above programs. For the first time, you can put your master disk in a safe place and boot on the duplicate.

Economically priced at only \$19.95 plus \$2.00 shipping and handling, the *Unprotect Driver* comes with full documentation and will work with *Selector* /// so you will no longer require a "key" diskette. The *Unprotect Driver* is sold for legitimate *Archival* purposes only. **ON THREE does not condone** and will not condone duplicating a disk for any other purpose.

Call Three: Hot Line/Apple /// User Groups

If you would like to get together with other Apple /// owners and exchange ideas, a user group is for you. Below is a listing of all Apple /// user groups known to us. If you have recently formed a group or know of one we have not listed here, please contact *ON THREE* and let us know so that they may be included. There is no charge for this service.

California

Sacramento Apple /// User Group
1433 Elsdon Circle, Carmichael, CA 95608
(916) 482-6660

Orange County Apple /// User Group
22501 Eloise Ave., El Toro, CA 92630
(714) 951-1231

L.A.-So. Bay Apple /// Users Group
P.O. Box 432, Redondo Beach, CA 90277
(213) 316-7738

Apple /// Users of Northern California
220 Redwood Highway #184
Mill Valley, CA 94941

International Apple Core Apple /// S.I.G.
908 George Street, Santa Clara, CA 95054
(408) 727-7652

Canada

Apples British Columbia Computer Society
Apple /// S.I.G.
P.O. Box 80569, Burnaby, BC
Canada V5H3X9
(416) 839-7779

Canadian Apple /// Users Group
80 Antibes Dr. Suite 2805
Willowdale, Ontario, Canada M25R 3N5
(416) 665-3622

The Astronic Club

1453 Highbush Trail, Pickering, Ont.
Canada L1V1N6 (416) 839-7779

Colorado

Colorado Apple Three User Group
P.O. Box 3155, Englewood, CO 80112
(303) 226-4198

Connecticut

Apple /// Society of So. Connecticut
34 Burr School Rd., Westport, CT 06880
(813) 226-4198

Florida

Sarasota Apple /// User Group
c/o Computer Centre
909 S. Tamiami Trail, Nokomis, FL 33555
(813) 484-0421

Georgia

Atlanta /// Society
385 Saddle Lake Drive, Roswell, GA 30076
(404) 992-3130

Illinois

Third Apple Users c/o Lavona Rann
1113 Wheaton Oaks Dr., Wheaton IL 60187

Kansas

Kansas City Apple /// User Group
5533 Granada, Roeland Park, KS 66205
(913) 262-3355

Maine

So. Maine Apple Users Group
Casco St., Freeport ME 04033
(207) 865-4761, X 2249

Maryland

Apple /// SIG Chairman
Washington Apple Pi
8227 Woodmont Av. #201
Bethesda, MD 20814 (301) 654-8060

Minnesota

Minnesota Apple Corp Users Group
P.O. Box 796, Hopkins, MN 55343

New Jersey

North Jersey Apple /// Users Group
c/o Roger T. Richardson
P.O. Box 251, Allamuchy, NJ 07820
(201) 852-7710

North Carolina

North Carolina Apple /// User Group
2609 North Duke St. #103
Durham, NC 27704

Ohio

Cincinnati Apple /// User Group
5242 Horizonvue Drive
Cincinnati, OH 45239
(513) 542-7146

Apple Dayton - Apple /// S.I.G.
P.O. Box 1666, Fairborn, OH 45324-7666
(513) 879-5895

Oregon

Oregon Apple /// Users Group
1001 SW 5th Av. #2000
Portland OR 97204
(503) 645-6789

Overseas

Apple THREE Group International
c/o Maj. H. Joseph Dobrowski
P.O. Box 913, Langley AFB, VA 23665

Apple /// Users Belgium/Netherlands
c/o H. Van der Straeten, Vestinglaan 49
2580 Sint-Katelijne-Waver, Belgium
(015) 205328

Apple User Group Europe e.V.
Box 11 01 69 D-4200, Oberhausen 11,
West Germany 0049-6195-7 3917

Apple /// User Group Netherlands
c/o J. Woretshofer, Ganzenikweerd 22,
NL-6229 TG Maastricht, The Netherlands
(043) 611704

British Apple Systems User Group (BASUG)
Apple /// S.I.G., P.O. Box 174,
Watford Herts, England WD2 6NF
0727 73390/72728

Le Club Apple
43 Avenue de la Grande-Armee
75116 Paris, France

Apple /// User Group
c/o Canberra Accounting Services
P.O. Box 42
Duffy A.C.T. 2611
Australia

Texas

Apple Corps of Dallas
Apple /// SIG
P.O. Box 5537
Richardson, TX 75080

River City Apple Corps /// S.I.G.
Box 13349, Austin, TX 78711
(512) 454-9962

Houston Area Apple Users Group
(Apple /// Division)
P.O. Box 610150
Houston, TX 77063
(713) 480-5690 or 974-5153

Virginia

Charlottesville Apple /// User Group
216 Turkey Ridge Rd.,
Charlottesville, VA 22901
(804) 642-5655

Greater Tidewater
Apple /// User Group
Route 2, Box 216
Hayes, VA 23072
(804) 642-5655 or
898-3500, ext. 2671

The *Call Three: Hot Line* is a service whereby Apple /// users with problems can call an area number to get assistance. The individuals answering the phones are fellow Apple /// users who have volunteered to help others over some of the rough spots. They are not compensated for this service, therefore we owe them a resounding "three cheers."

We would like to expand this service even further, so if you are familiar enough with your machine to be able to aid others and answer questions, please write us, stating your areas of expertise and availability in terms of days and hours. Certainly you can bask in the knowledge that you have been able to help a fellow Apple /// user.

For those of you who have questions, feel free to call our consultants listed below. **Please** observe however, the calling hours shown and before placing a call, double check the time zone so that you don't inadvertently wake someone up! There are no other restrictions on using the service other than as stated above. Again, **please** remember these people are volunteers, and if we receive information indicating that calling hours are not being observed, we will have no choice but to remove the consultant from the listing or, worse, discontinue the service.

The following is an alphabetical listing of subjects and abbreviations used in the "subjects" column of the consultants listing.

Subject	code	Subject	code
Accounting	AC	Graphics	GR
Agriculture	AG	Micro-Sci	MI
Assembly Lang.	AL	Modems	MD
Business Basic	BB	Modula-2	MU
Catalyst	CT	Pascal	PA
Cobol	CO	ProFile	PR
CP/M	CP	Quark	QU
Data Base	DB	SOS	SO
Education	ED	Spreadsheets	SS
Emulation	AE	Telecom.	TC
Financial	FI	/// E-Z Pieces	EP
Fortran	FO	Word Proc.	WP
General	GE		

Name	Area	Telephone	Days	Hours	Zone	Subjects
Coville Woodburn	NH	(603) 863-5590	M,Tu,Th,F	7-8pm	Eastern	BB, CT, GE, GR, MI, QU, WP
Ken Johnson	MA	(413) 253-2298	Su-Sa	6-9pm	Eastern	BB, PA, MD, WP, MI
Don Loosli	MI	(313) 626-3848	M-F	9am-5pm	Eastern	GE, WP, SS, DB
Harry T. Hanson, Ph.D.	NJ	(201) 467-0712	M-F	6-9pm	Eastern	GE, PA, BB, CT
Edward N. Gooding, Sr.	VA	(804) 747-8751	Su-Sa	6-9pm	Eastern	CO, SS, PR, MD, CT
Jeff Fritz	WV	(606) 353-9493	M-Sa	8-11pm	Eastern	BB, DB, GE, MI, SS, TC, EP
Al Johnston	FL	(904) 739-1600	M-F	9am-6pm	Eastern	GE
Paul Sanchez	FL	(305) 266-5965	Su-Sa	10am-4pm	Eastern	SS, PR, CT
R.B. Thompson	NC	(919) 787-1703	Su-Sa	10am-10pm	Eastern	BB, DB, GE, SS, WP
J. Donald Glenn	NE	(402) 291-9177	Su-Th	7-10pm	Central	GE
Jim Ferencak	IL	(312) 599-7505	M-F	10am-5pm	Central	GE, EP, DB
Neil Quellhorst	IL	(217) 434-8727	Su-Sa	7-9pm	Central	AL, BB, GR, PA, SO, TC
Terri Wiles	CO	(303) 850-7472	Su-Sa	10am-6pm	Mountain	PA
William Prince	OR	(503) 254-6465	M-F	9am-4pm	Pacific	GR, TC, Corvus
Karl La Rue	WA	(509) 582-6459	F-Su	6-10pm	Pacific	MD, GE, EP, WP, TC, SS, CP
Pat Holwagner	CA	(415) 433-2323	M-F	10am-6pm	Pacific	GE, SS, WP, CT, DB, SU, AE, EP
M. Kent Hockabout	CA	(415) 865-8579	M-F	9am-10pm	Pacific	DB, GE, GR, MI, MD, QU, SO, SS, TC, WP, AE, EP
Vincent F. Latona	CA	(818) 703-0330	M-F	9am-5pm	Pacific	GE, WP, BB, SS, AE
Wayne Hale	CA	(619) 450-3856	M-F	7-11am	Pacific	BB, GR, CT
Dennis R. Cohen	CA	(818) 956-8559	Su, M-F, Sa	10am-10pm 7-9pm 12n-6pm	Pacific	GE, PA, MU, WP, DB, SO
Kelly C. McGrew	WA	(206) 943-8533	Su-M, Th-Sa	7-9pm	Pacific	DB, GR, SS, PR, MD, CT
H. Van der Straeten	Belgium	(015) 205328	Su-Sa	7-10pm	—	BB, CT, DB, GE, PA, PR, SS

AppleWriter Forever

sharon webb

Lots of word processors allow macros. *AppleWriter* /// calls them glossaries, but the meaning is the same. Isn't it?

Well, not really. Many macro functions are limited. All they let you do is type out boilerplate paragraphs or a name and address with a couple of keystrokes. This is useful, of course; it can save lots of time. But a macro function that does no more than that isn't too smart. On an I.Q. scale, it rates no more than average.

AppleWriter /// falls into the gifted range.

There are several reasons for this. Foremost is *AppleWriter*'s ability to couple a glossary command with WPL, allowing you to run a program with one or two keystrokes. This makes for a very powerful team indeed, but that's not all. AW3 can access SOS Commands and the Additional Functions Menu. Think about all the things you do with those two menus. Glossaries can do them automatically.

But we still haven't exhausted the reasons that *AppleWriter* has one of the most useful macro functions of any word processor you can buy—for *any* computer, at *any* price. So, what's left? The search and replace function, for one. AW3's "Find" command is extremely powerful due to the program's use of virtual files that can be much larger than memory. Combine this with a glossary and a WPL program and you can use your word processor as a database.

There's still another reason: the backslash command. Remember that one? It's the command that lets you scroll a reference file onto the screen without disturbing the file you have in memory. A glossary using the "[L]oad filename" function allows you to create customized menus and help files; automatic calendars and desktop accessories; telephone lists and Rollodex files. And—for those of us who appreciate esthetics—it can do these things without the visual clutter of Apple's Macintosh desktop.

So, let's boot *AppleWriter* ///, pull out that disk we started last month, and get to work.

But first, this word: You *are* using the latest version of *AppleWriter*, aren't you? The one with the three manuals and the numeric pad overlay template? If you're still using the original version (the one with the black "Special Delivery Software" cover) your word processor is obsolete and you should update immediately. The original had only one advantage over the newer version: the ability to show carriage returns quickly. And we're going to fix that right away. . .

Now, let's make a glossary. (Later it can be loaded with your current glossary and saved as one file. The only precaution is to make sure that the initial representative characters—ie., the characters that you press while holding down the Open-Apple key—do not duplicate ones already in use.)

First, clear memory. Then type a right bracket (]). Without any spaces between characters follow this with [Control V] [Control Q] [Control V]. Follow this (no space) with the letter g. Then press [RETURN].

Your screen should look like this:

lQg

This is a glossary entry that toggles returns without your having to enter the Additional Functions Menu. I've used the right bracket as the representative character because it is the

same as the return symbol in AW3. We'll be using this command in a few minutes, but first, let's add a few more entries to the new glossary.

Last month we created a WPL program called WPL.AUTO-REPLACE. The next entry will run this program automatically from a disk in drive 1 by invoking the Print Program "Do" command. Type the following without the intervening spaces that I've added for visual clarity:

a [Control V] [Control P] [Control V] do .d1/WPL.AUTO-REPLACE]

Now press [RETURN]. Your entry should look like this:

aPdo.d1/WPL.AUTO-REPLACE]

This next one runs last month's program WPL.DISK.KEY:

k [Control V] [Control P] [Control V] do .d1/WPL.DISK.KEY]

Press [RETURN] and you should see this:

kPdo.d1/WPL.DISK.KEY]

With your disk in drive 1, save these entries to the filename GLOSSARY.1.

To load the new glossary, press [Control Q] to go into the Additional Functions Menu, then press E. Type .d1/GLOSSARY.1 [RETURN].

Now that the new glossary is loaded, try it out. Hold down the Open-Apple key while pressing] (the right bracket key) and your returns should toggle on. When you're tired of looking at them, press O-A] again and they'll toggle off. To run WPL.AUTO-REPLACE, hold down Open-Apple while pressing a; to run WPL.DISK.KEY, hold down Open-Apple while pressing k.

Desktop Accessories

Have you ever been in the middle of a word processing project when the phone rings and you need to write a memo? Or perhaps you need to jot down a few notes about the project at hand. The next three glossary entries let you throw away those yellow pads by allowing you to write and save memos without disturbing your file in memory.

The first one looks like this:

mE]]]]]]]]]]]]]]-MEMO-]-30-BF]-MEMO-]-N]F<>><[N]

Remember that any letter shown in **bold italics** represents a control character. Enter it by typing the sequence [Control V] [Control character] [Control V].

The lower case m (for "memo") is the character you will use with Open-Apple to invoke the entry. This is followed by a [Control E] which sends the cursor to the end of any file in memory. It then prints a delimiter () and inserts thirteen returns so that you will be presented with a clear screen. "-MEMO-" is printed then, followed by two returns and "-30-" (the journalistic symbol for "The End"). The cursor now moves to the beginning of the file, turns around, and looks for "-MEMO-" and then for those two returns. When it finds them, it parks the cursor—and in a flash, you are ready to write that memo.

The next command [S]aves your notes under the filename ".d1/MEMO." Then the cursor jumps to the beginning of the

file, searches for the delimiter (), and deletes the memo without disturbing your original file. It looks like this:

```
MBF I-MEMO-INS.D1/MEMOI-30-IBF<=-30-<<]Y]
```

Don't forget [Control V] [Control character] [Control V] for those **bold-italic** letters. This command is called by pressing Open-Apple M.

The last command lets you easily rename .d1/MEMO so that later "memos" do not write over your original notes. When using this one, all you need to do is type in the new filename and then [RETURN].

```
+OB.D1/MEMO]
```

The "+" is, of course, the character used with O-A to call up this entry. Another character can be substituted if you like. The [Control O] puts you into the SOS COMMANDS menu, chooses B (Rename File), and prints the old name ".d1/MEMO."

Save GLOSSARY.1 again. Now all six glossary entries should be on disk. But your Apple /// doesn't know we've added new entries until you reload the newly-saved glossary. Load it as we did above, then try it out.

When you're satisfied that "MEMO" is working properly, clear memory to make room for our next desk accessory WEEKLY REMINDER.

First, press [RETURN] ten times. (You might want to use your new glossary entry to toggle returns so you can count them to be

```
-----WEEKLY.REMINDER-----
DATE: September 15-21, 1986
MON:
TUE:
WED:
THU:
FRI:
SAT:
SUN:
```

sure you have ten.) The returns will cause WEEKLY.REMINDER to be properly formatted on the screen when it is invoked.

Now, type exactly what you see in figure 1. Follow this with three more returns. Type in a few sample appointments if you like and save to the filename ".d1/WEEK."

Okay. Now what?

Now, clear memory and load in GLOSSARY.1 again. Using the sequence [Control V] [Control character] [Control V] for each character shown in **bold italics**, type in these two entries:

```
[L.D1/WEEK]
]BF<=><>><A]
```

When you've done this, [S]ave .d1/GLOSSARY.1. and reload the glossary using the Additional Functions Menu.

Now, by holding down Open-Apple while pressing "(" (left parenthesis), you can load WEEKLY REMINDER whenever you like. When you're through looking at it, [RETURN] puts you back to whatever file you have in memory.

But what happens when the week is up? That's where the second entry comes in. To prepare next week's WEEKLY REMINDER, just clear memory, [L]oad WEEK, and hold down Open-Apple while pressing ")" (right parenthesis). Amazing! This entry wipes the old WEEKLY REMINDER clean, making it ready for the coming week's schedule. Just type in the new appointments, save the file by the same filename (.d1/WEEK), and you're ready to go.

And if you like to plan ahead, there's nothing to stop you from creating a file called .d1/NEXT.WEEK and a glossary entry to call that one up too.

If you're using a hard drive or a RAM disk, just substitute the appropriate path name instead of ".d1" in the above commands and you'll find MEMO and WEEKLY REMINDER real conveniences.

In a later article, we'll create more desktop programs. And we'll be taking another look at AppleWriter macros that can help you with editing, formatting, printing, and file-saving chores.



ON THREE Presents...

Grafix Manager™ \$49.95 **plus \$3.00 s/h**

The complete graphics utility for the Apple /// interfaces to Draw ON ///™ and all graphics programs and allows printing enlarged or reduced portions of the graphics screen, normal or inverted, single or double density and with four rotation values.

For the first time you can load directly any DOS 3.3 or ProDos Hires or double Hires graphic files (including "Print Shop") and of course SOS fotofiles or other binary graphic images.

Comes complete with full documentation and diskette containing standalone SOS interpreter and a Desktop Manager™ module. All popular printers, serial and parallel interfaces supported and limited color graphics capability is included.

• Available now!

ON THREE's 512K Memory Upgrade is the Single Most Exciting Enhancement to the Apple /// Ever!

Specially priced at just **\$399***

- Ideal for meeting extra memory needs of applications like /// E-Z Pieces, VisiCalc and Draw ON ///™ or desktop accessory programs.

Just imagine what you can do with:

- **414K in /// E-Z Pieces!**
- **442K in Advanced VisiCalc!**
- **455K in VisiCalc!**
- **456K in AppleWriter 4.0!**
- **456K in Business Basic!**

The *ON THREE 512K Memory Upgrade* is simple to install by following the directions in the installation manual. Even better, it does not use any of your precious expansion slots and works with all SOS programs. If you ever run out of memory once you have your 512K upgrade in place, you may need a minicomputer!

Another problem the *ON THREE 512K Memory Upgrade*

can solve is when you are running a hard disk with *Selector ///* or *Catalyst*. Certain programs take up a lot of memory and sometimes there is not enough to go around. And if you think the hard disk is fast, wait till you try the *RAMDisk* that comes free with the 512K upgrade. It'll amaze you with its speed. If you were used to making notes, etc. while your drive was working, you can forget it.

You see, with the limitations of a 256K system, programs like *Selector ///* and *Catalyst*, in conjunction with special purpose utilities like *Desktop Manager* or the *Calendar Pak* will run on only minimal *Selector* or *Catalyst* systems. This means no spooling and a lot of dynamic driver loading. Who needs problems like this? Now you can run, for example, *Draw ON* with *Catalyst* and see your pictures being printed on the printer while you have already started word processing with *AppleWriter ///* or *Word Juggler*.

Read the checklist in the box below to see all the freebies that come with the *ON THREE 512K Memory Upgrade*.

* The full purchase price is \$449 plus \$10 shipping and handling. (And plus 6% Calif. sales tax for residents.) After installing the *ON THREE 512K Memory Upgrade*, you can return your old 256K board to us for a \$50 rebate or \$60.00 credit.

If you have an older 128K machine, the cost is a flat \$449 (plus shipping) and *no* rebate. Installation must be performed by *ON THREE* or a dealer.

ON THREE also will install any upgrade for you at just \$50. We offer same day turnaround on 256 to 512K upgrades. Call for more information.

The *512K Memory Upgrade* is the single most exciting thing to happen to the Apple /// in a long, long time. Using state-of-the-art 256K memory chips, the board is very simple to install and even easier to use. The *512K Memory Upgrade* will NOT take up an expansion slot as it is a simple board swap-out. Just keep on using your existing programs—you don't have to change them! *VisiCalc*, *Advanced VisiCalc*, /// *E-Z Pieces*, *Apple Writer*, *Business Basic*, *Pascal*, *Catalyst*, *Selector ///* and many other programs will automatically have about 450K of memory to work with.

Look!

At no extra charge, *ON THREE's 512K Memory Upgrade* includes:

- ✓ Complete 24-page instruction manual.
- ✓ Ultra-fast *RAMDisk Drive* with demonstration programs.
- ✓ *The Upgrade to 512K Utility disk . . .*
updates all your disks to work with the expanded memory and the *Updated* version (1.2) of the *System Utilities* program that permits larger SOS DRIVER files.
- ✓ *A copy of the Confidence Memory Program . . .*
tests all memory and ensures your *512K Memory* board is working correctly.
- ✓ *ON THREE's full 90-day warranty.*
- and of course, an **Apple /// 512K memory board with state-of-the-art 256K memory chips.**

ON THREE (805) 644-3514

P.O. Box 3825, Ventura, CA 93006

Calif. residents add 6% sales tax (products only) We accept Visa, Mastercard, American Express†
†3% surcharge on American Express orders

Increase Productivity With a More Powerful 512K Apple ///!

BULK RATE
 U. S. POSTAGE
PAID
 Permit No. 90
 Ventura, CA

ON THREE Presents ...

Draw ON ///™

The most versatile Apple /// graphics tool ever designed!

- Use Draw ON /// directly with Apple /// mouse and interface, joystick, keyboard, or Apple Graphics Tablet (Graphics Tablet version \$50 additional)
- Draw ON /// can spruce up dull graphs with its many typefaces or by creating fancy borders and textured images
- Draw ON /// comes complete with easy to follow menus, a durable spiral-bound instruc-

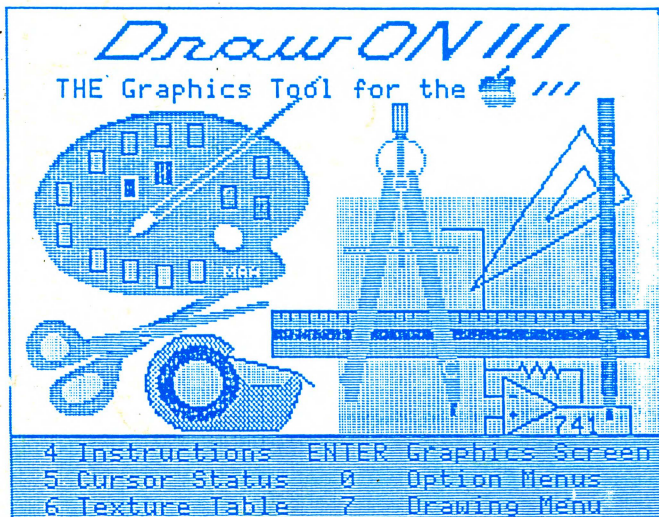
- tion manual and tutorial, keypad overlay, and unprotected diskettes which will install on Selector /// or Catalyst
- Draw ON /// is compatible with all monochrome monitors as well as NTSC (standard) and RGB (hi-res) color monitors
- Multiple help screens
- User-adjustable grids
- Zoom in for detailed work
- Rubber-banding of lines

\$179 ... plus \$5 shipping and handling

What? A computer graphics program that is powerful and easy to use, has the resources of a complete graphics art studio, creates professional-quality charts and diagrams, complex illustrations and original artwork, letterheads, slides and tables for presentation? Don't you believe it! ... unless you're talking about Draw ON ///™, from ON THREE!

Draw ON /// transforms your Apple /// into a drafting table, easel and sketch pad, all rolled into one, like MacPaint with color. Computer Aided Design (CAD) applications such as circuit layouts and flowcharts are childs play for Draw ON ///.

Draw ON /// comes with a wide selection of text fonts and objects which can be supplemented with those of your own design. Mix and match with drawings and charts, using Draw ON ///'s powerful cut and paste facility. You can use Draw ON ///'s many fonts to label your own drawings as well as those in other applications, and you can pick up objects, expand, shrink, rotate, invert, and texture.



Draw ON /// requires 256K minimum memory

Look!

You can print Draw ON /// screens with all of these popular printers:

- Apple DMP
- Epson FX, MX, RX series
- ImageWriter
- ProWriter

plus, with a PKASO/PKASO-U interface:

- Centronics
 - IDS Prism, Color Prism*
 - NEC
 - Okidata
 - ... and others
- *required to print color drawings

Specify printer and interface when ordering