

LIMITED 90-DAY WARRANTY - BRITANNICA SOFTWARE DISKS
(valid in USA & Canada Only)

Britannica Software, Inc. warrants to the original consumer that the Britannica Software disk shall be free from any defects in material or workmanship for a period of 90 days from the date of purchase. You should keep your receipt for validation.

Any Britannica Software disk which is found to be defective during the warranty period will be replaced by Britannica Software. Return one disk, accompanied by proof of date of purchase satisfactory to Britannica Software, no later than one (1) week after the end of the warranty period, shipping charges prepaid, to: Britannica Software, Inc., Customer Relations, 345 Fourth Street, San Francisco, CA 94107.

This warranty shall not apply if the disk has been damaged by negligence, accident, improper or unreasonable use, or by any other causes unrelated to defective materials or workmanship.

**DISCLAIMER OF WARRANTIES –
BRITANNICA SOFTWARE COMPUTER PROGRAMS**

All Britannica Software computer programs and related informational materials are distributed on an "as is" basis without warranty of any kind. Any statements concerning capabilities or utility of a computer program are not to be construed as express or implied warranties. **The entire risk as to the quality and performance of such programs is with the purchaser. Should such programs prove defective following their purchase, the purchaser and not the manufacturer, distributor, or retailer assumes the entire cost of all necessary servicing or repair, (except for replacement by Britannica Software of defective disks as provided above).**

**EXCLUSIONS FROM WARRANTIES –
BRITANNICA SOFTWARE DISKS AND COMPUTER PROGRAMS**

The exclusions and disclaimers in this paragraph apply to all Britannica Software disks and Britannica Software computer programs. **All implied warranties (including warranties of merchantability and fitness for any particular purpose) with respect to Britannica Software products are hereby excluded and disclaimed. Britannica Software shall not be liable for incidental and/or consequential damages, including injury to property or persons, that may result from use, malfunction, or failure of Britannica Software disks and computer programs. In all cases, the liability of Britannica Software shall be limited to replacement of defective disks as provided above. Some states do not allow the exclusion or limitation of incidental or consequential damages, so the above limitations and exclusions may not apply to you. This section regarding warranty gives you specific legal rights, and you may also have other rights which vary from state to state.**

DESIGNASAURUS BACK UP DISKS & OUT-OF-WARRANTY POLICY:

You may purchase one backup OR one replacement disk that is out of the warranty period for \$12.00. This charge includes shipping & handling, and is provided only to registered users of Designasaurus. For replacement disks, be sure to include your original disk. For a backup disk, please be sure to send in your warranty card at the same time.

MN00GS0122 (10M12/88)

DESIGNASAURUS™



Learn to live, eat and survive
as the dinosaurs did long ago.
Design, print and display
your own dinosaurs today.

For dinosaur lovers of all ages.

By **DesignWare**

Learning software designed to grow with you

APPLE //GS EDITION

System Specifications

*Designasaurus*TM GS version will run on an Apple IIGS computer with a minimum of 768K of RAM. One 3.5" drive is required, and two 3.5" disk drives are highly recommended. *Designasaurus* requires GS/OS i.e. System 4.0 or later. See your local dealer if you need a system & system utilities update. *Designasaurus* may be loaded onto your hard disk.

Designasaurus can print many wonderful pictures, posters and diplomas. Two of the most popular printers are supported: ImageWriter, and ImageWriter II. *Designasaurus* does not print in color. The LaserWriter is not supported.

A mouse is required. No game paddles or joysticks are needed.

Designasaurus Contents:

BOOT/BUILD/PRINT DISK
USER'S MANUAL
T-SHIRT TRANSFER PAPER

WALK/PICTURES DISK
WARRANTY CARD

Making T-Shirt Transfers

Designasaurus allows you to create your own dinosaur T-shirts. Enclosed in the box is a *Print'n Wear!*TM heat transfer and complete instructions for use. You may color the transfer with readily available oil pastels (we recommend Sanford, Weber or Cray-Pas). This is a great family project. We suggest that you practice with regular paper before using the transfer paper. **DO NOT INSERT T-SHIRT TRANSFER PAPER INTO A LASER PRINTER OR ANY OTHER THERMAL PRINTING DEVICE!**

Please remember to supervise your children when applying iron-on transfers!

To order additional transfers from Foto-Wear!, Inc., see the enclosed coupon.

About this manual

You should already know how to point, click, double-click, drag, and copy files using the mouse. If you do not, consult your APPLE //GS owner's manual. You should take the GUIDED TOUR before using this program.



*Designasaurus*TM

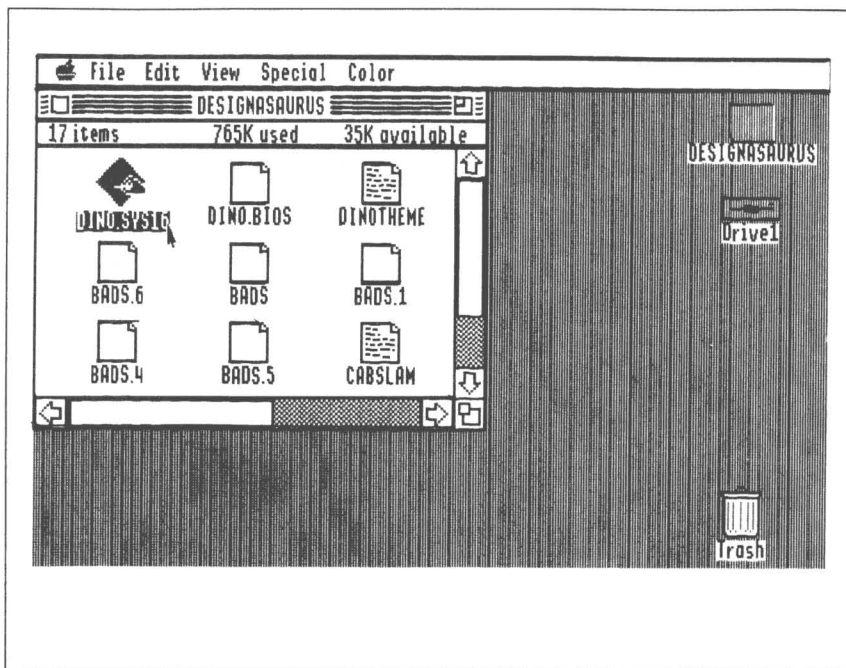
Developed by
Intergalactic Development, Inc.

Published by
DesignWare, Inc.

Loading <i>Designasaurus</i>	4
Hard Disk Installation	5
Three Activities	5
PRINT-A-DINOSAUR	6
BUILD-A-DINOSAUR	8
WALK-A-DINOSAUR	11
<i>The Ecosystem</i>	12
<i>Earning a Diploma</i>	13
Suggested Reading	14
Credits	14
Troubleshooting	15

Copyright © 1988 by
DesignWare, Inc.
All rights reserved.





It's easy to load & run *Designasaurus*.

ONE DRIVE SYSTEM:

First, you'll need to reboot using the Boot/Build/Print disk. Simply place the Boot/Build/Print disk with the label face up in drive 1 and reboot your computer.

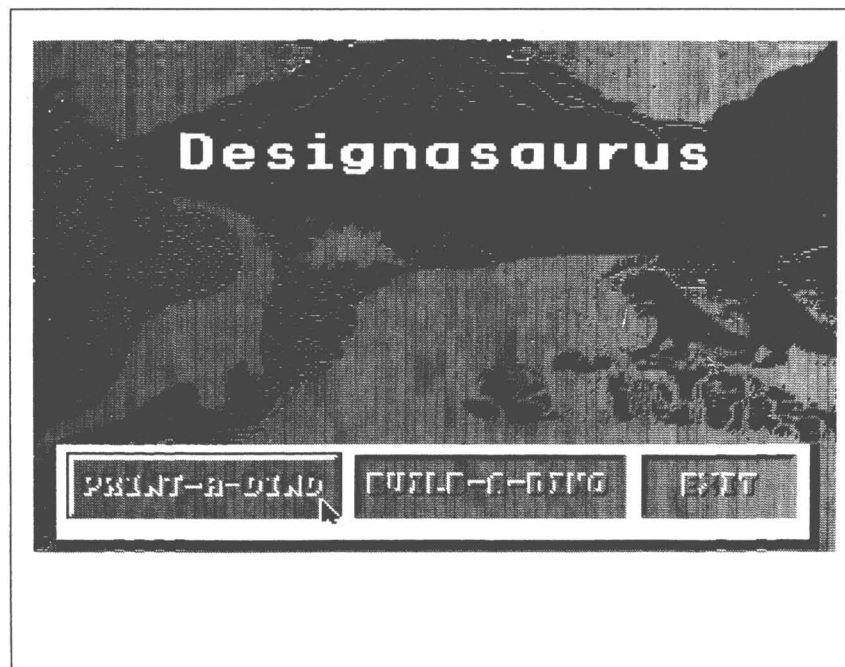
To play **Build-A-Dinosaur** or **Print-A-Dinosaur**, select DINO.SYS16 icon to **Build** or **Print-A-Dinosaur**. When **Print-A-Dinosaur** asks for the pictures and a pathname, just insert the Walk/Pictures Disk and press return.

For **Walk-A-Dinosaur**, reboot using the Boot/Build/Print disk as described above, then insert the Walk/Pictures disk. Click on the DINO.WALK icon to start playing.

TWO DRIVE SYSTEM:

Place the Boot/Build/Print disk in drive 1, and reboot the computer. Place the Walk/Pictures disk in drive 2. Open the second disk icon.

Select the DINO.SYS16 icon (on the first disk) to **Build** or **Print-A-Dinosaur**. Double click on the DINO.WALK icon to play **Walk-A-Dinosaur** (it's on the second disk).



HARD DISK SYSTEM LOADING:

You'll need to copy all the files, except for the system folder, from the disks over to a folder on your hard disk called *Dino*. First, create a folder called *Dino* in your hard disk.

Copy all the files by opening the disk, then pressing "⌘" (command key) and the "A" keys simultaneously – this will select all the files on the disk. Drag all the icons over to the Designasaurus folder.

Repeat this procedure for both disks.

You should throw away the system folders that you've copied. You won't be needing them.

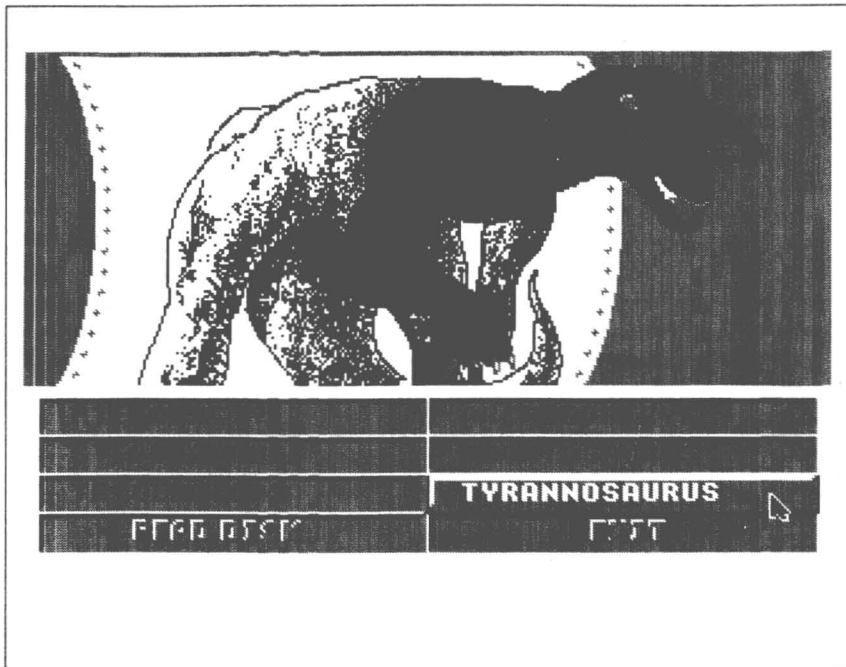
Select DINO.WALK icon to play **Walk-A-Dinosaur**, or the DINO.SYS16 icon to **Build** or **Print-A-Dinosaur**.

Consult your user's manual if you don't know how to create folders or drag icons.

THREE ACTIVITIES

Designasaurus allows you to **print** dinosaur posters and T-shirt transfers, **build** your own dinosaur from actual fossil parts, and **walk** a dinosaur through five prehistoric epochs.





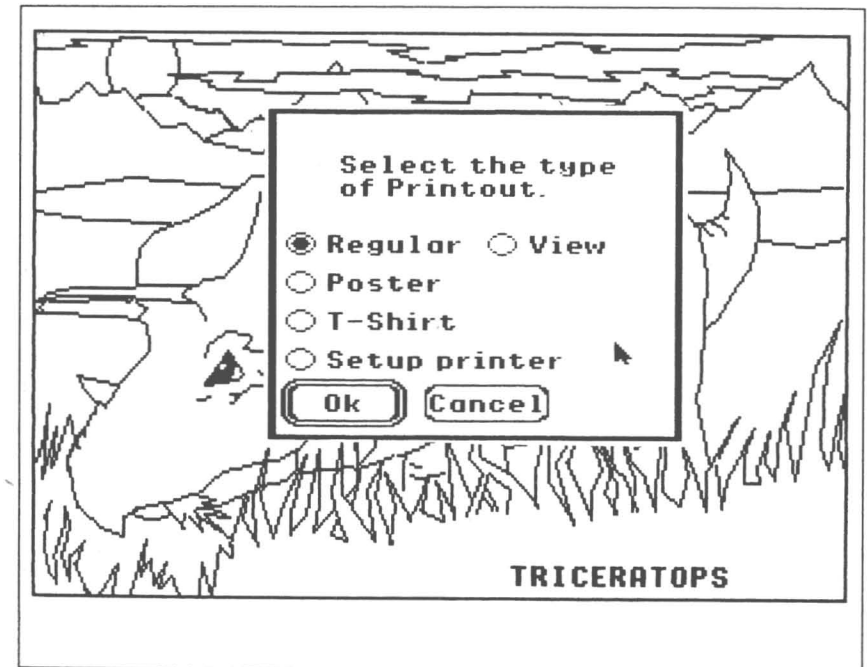
Designasaurus will make beautiful 8-1/2" x 11" print-outs ("regular"), poster-size print-outs and even T-shirt transfers. When "regular" is selected, *Designasaurus* will also print fascinating information about the dinosaur.

To print a dinosaur picture, double-click on the DINO.SYS16 icon from the **Boot/Build/Print** disk. Select **Print** from the title screen (the main menu). If you have a single drive system, you will be asked for the picture disk. Remove the **Boot/Build/Print** disk from the disk drive and replace it with the **Walk/Picture** disk, and click OK. If you are using a two drive system, you may need to click on the DRIVE button to access the second disk.

Hard Disk Users Note:

When *Designasaurus* asks where the pictures are, you'll need to type the complete pathname using your hard disk's name for the pictures: [for example: /yourhardiskname/dino into the dialog box.] Make sure to backspace over the previous pathname before typing in the new one!

The **Walk/Picture** disk has 12 dinosaurs. Select READ DISK to load the remaining six dinosaur pictures.



Double-click on the dinosaur that you wish to print. You'll see the dinosaur you've selected. Press any key or mouse-click to continue.

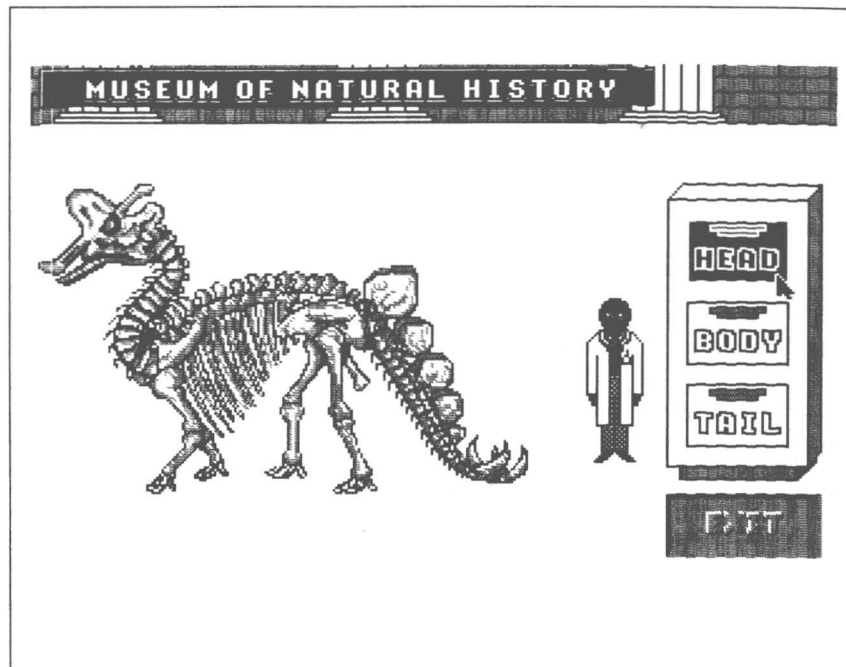
A dialog box will appear. Select the type of print-out that you want. If you select a regular print-out (8-1/2" x 11"), **Print-A-Dinosaur** will produce two pages: a picture of the dinosaur you have chosen and a description of it. Poster size printouts will produce four 'tiled' images.

A second print quality dialog box will appear.

Designasaurus prints in black & white so you can color the dinosaurs. You can print all the pictures, color them, and make your own Dinosaur Book. Include your creations from Build-A-Dinosaur to make your own, unique book!

Select EXIT to end this activity.





This *Designasaurus* activity allows you to create your own dinosaurs. To start this activity, select **Build** from the title screen (the main menu).

Welcome to the Museum of Natural History!

Use the mouse to help the paleontologist open the fossil file drawers. Double-click on the drawer you want to open.

When you select the fossil type you want to examine, the computer displays the fossil under its name. Use the mouse to highlight your choice: NEXT FOSSIL, LAST FOSSIL, ADD or CANCEL.

To browse different fossils of the same type, double click on NEXT FOSSIL or LAST FOSSIL. Select ADD to add the fossil to the dinosaur you are building in the museum.



Once you have constructed a complete dinosaur skeleton, click anywhere to continue. When you are asked to name the dinosaur that you have made, you may enter any name up to fifteen letters long. Be sure to delete "dinosaur name" before typing. This dialog box will also ask you to choose the size of the print-out that you want. You may print your creation in one of two sizes or on the special T-shirt transfer paper.

Select VIEW to see your creation before returning to the museum. Press any key to continue.

The computer will display important information about your dinosaur. Press any key to continue. Another dialog box will appear.

Designasaurus prints in black & white so you can color the dinosaurs. You can print your creations, color them, and make your own Dinosaur Book. Include your pictures from Print-A-Dinosaur to make your own, unique book!





Designasaurus

After your print-out is finished the computer returns to the *Museum of Natural History*. To build a new dinosaur select any drawer and change any of your dinosaur's parts. Let your imagination go! Be creative!

Of course, you can print out your creation in any of the three modes—regular, poster size, or t-shirt transfer. Wear a t-shirt with a unique dinosaur named after yourself!

NOTE: Not all parts of all fossils are represented in *Designasaurus*.



Brontosaurus



Stegosaurus



Tyrannosaurus Rex

Select
Dinosaur

Cancel

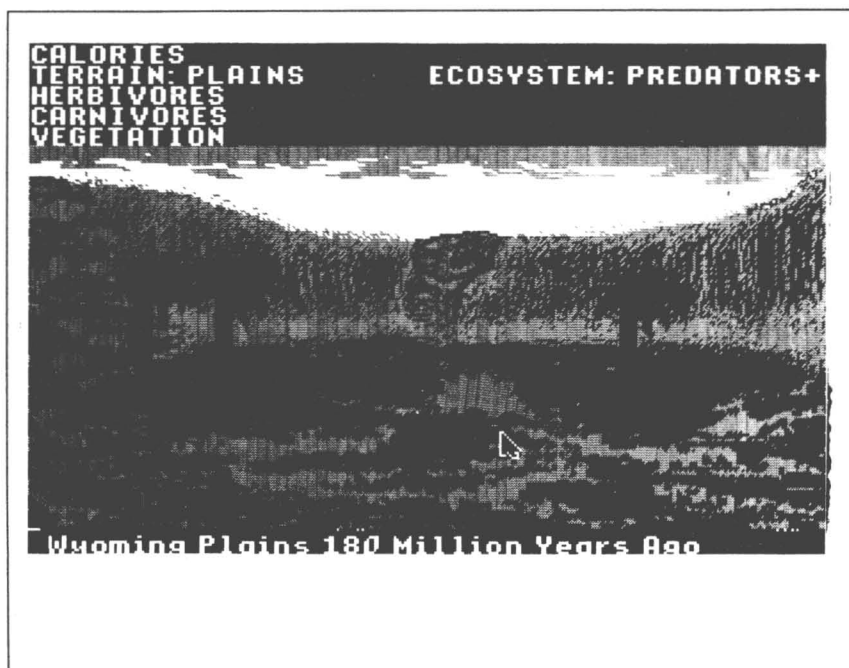
To run WALK-A-DINOSAUR double-click on the DINO.WALK icon on the Walk-A-Dinosaur disk.

The WALK-A-DINOSAUR section allows you to control a Brontosaurus, Stegosaurus or Tyrannosaurus Rex as it travels through five different ecosystems. Use a mouse-click to select a dinosaur. WALK-A-DINOSAUR will begin automatically when you choose your dinosaur. Select CANCEL if you do not want to play.

To move your dinosaur, move the pointer in the direction you want to go. The dinosaur will always follow the pointer.

To eat, simply hold down the mouse button when your dinosaur is near the right food. If you don't want your dinosaur to eat, do not hold down or click the mouse button. A Brontosaurus eats tall trees, a Stegosaurus likes short shrubs and a Tyrannosaurus Rex feeds on the Brontosaurus and the Stegosaurus.





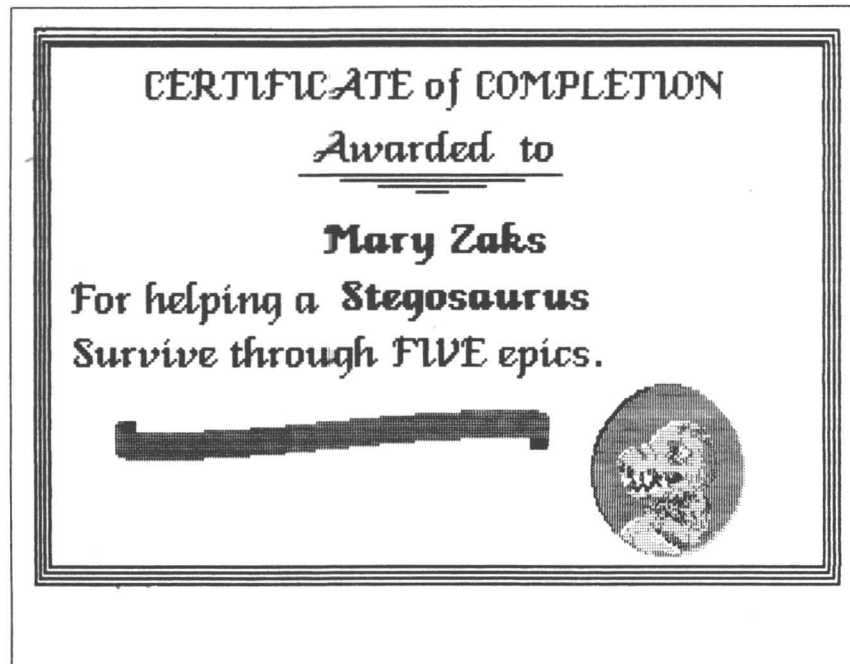
Remember that the object of **WALK-A-DINOSAUR** is to travel through all five ecosystems. When you move your dinosaur to the right of the screen, it advances to the next ecosystem. If you move your dinosaur to the left border, it returns to the previous landscape. Your dinosaur cannot move left of the first ecosystem.

THE ECOSYSTEM

Carnivores (meat-eating dinosaurs like Tyrannosaurus Rex), herbivores (like Brontosaurus and Stegosaurus) and the vegetation that they fed on were interdependent in the prehistoric ecosystem.

Each of the five ecosystems in **WALK-A-DINOSAUR** has a different number of carnivores, herbivores and tall and short vegetation. The graphs at the top of the screen show how many of these elements are in the ecosystem and how many **CALORIES** your dinosaur has (its strength).

Your dinosaur burns **CALORIES** faster the more it moves, and collects **CALORIES** by eating. Press the **ESC** key to pause.



Earning a Diploma

When you have successfully guided your dinosaur through all five ecosystems, you will be awarded a diploma. Remember to delete the words, "Your Name" before you type your own! Press **RETURN**.

To Help You Earn A Diploma

The number of dinosaurs and plants in each ecosystem is shown on the corresponding graphs. Your dinosaur's actions have an effect on the total ecosystem. Don't eat too much in any one ecosystem, or you might upset the delicate balance of the environment.

If your dinosaur is a Brontosaurus or a Stegosaurus, remember to graze on the right kind of vegetation. And, if your dinosaur is chased by a Tyrannosaurus, it's a good idea to avoid food (don't use the mouse button) and run away.

If your dinosaur is a Tyrannosaurus Rex, keep an eye on the *Herbivores Graph*. Some ecosystems are healthier than others and are able to support more dinosaurs. If you find that food is scarce in an ecosystem, the next ecosystem might be healthier. Walk there quickly!



Books about Dinosaurs

Paleontologists are constantly discovering new facts about dinosaurs and updating their theories about these wonderful animals that lived so long ago. A great deal of research was done to make *Designasaurus* as accurate as possible. Many books were consulted, including:

The Dinosaur Heresies by Robert T. Bakker, Ph.D (1986, published by William Morrow & Co., Inc., New York). Dr. Bakker writes about some of the newest and most exciting theories about dinosaurs.

Simon & Schuster's Guide to Fossils by Paolo Arduni and Giorgio Teruzzi (1986, Simon & Schuster, New York).

Dinosaurs, Text by Mary Packard, Illustrations by Christopher Santoro (1981, Simon & Schuster, New York). This book has great dinosaur drawings.

Dinosaurs of North America, Text by Helen Roney Sattler, Illustrations by Anthony Rao (1981, William Morrow & Co., New York). Wonderful drawings and detailed text.

The Fossil Book by Carroll Lane Fenton and Mildred Adams Fenton (1958, Doubleday & Co., New York). This is a very detailed book.

The World of Dinosaurs by Michael Tweedie (1977, William Morrow & Co., New York). This book has many color drawings of dinosaurs.

Fossils, the Oldest Treasures That Ever Lived by Jochen Helms (English Translation 1985, T.F.H. Publications, Inc., Neptune City, New Jersey). This book has many photographs of fossils.

The Dinosaurs: A Fantastic View of A Lost Era by William Stout, Edited by Byron Preiss, Narrated by William Service (1981, Bantam Books, New York). William Stout draws dinosaurs in a delightful Art Nouveau style.

CREDITS

PROGRAMMING

Andy Kanakares
Bob McGeever
D. Ezra Sidran

COMPUTER GRAPHICS

Rick Claussen
Marge Coleman
Ed Isenberg

SOUND & MUSIC

David Craft
D. Ezra Sidran



If you have problems with a *Designasaurus* function, first check the appropriate section in this manual to make sure you are using the program properly.

IF, AFTER SELECTING THE PROGRAM ICON, YOUR SYSTEM CRASHES

Designasaurus will not run with any RAM disks. Use your Control panel to reset your maximum Ram disk size to 0, then **restart the machine using the on/off switch**. More information about RAM disks are in your System Disk guide.

You may lack sufficient memory. Eliminate any unnecessary desk accessories before running *Designasaurus*.

YOU GET SYSTEM ERROR \$0201

Designasaurus will run only on an Apple //GS with at least 768K of memory available. Remove any unnecessary desk accessories, RAM disks, and other co-resident programs first. *Designasaurus* requires that all 768K is available. You may even need to remove device drivers. Contact your local Apple dealer for information on an upgrade if you lack sufficient memory.

IF DESIGNASAURUS DOESN'T PRINT PROPERLY

Designasaurus supports two popular printers: the ImageWriter and ImageWriter II. If your printer is not one of these, check your printer manual to see if it can run in an *emulation* mode for one of these printers. Call the dealer where you purchased your printer for help if necessary.

"FILE NOT FOUND" or a similar error message

Your disk is probably damaged. You may wish to purchase a backup disk. For more information on backup disks, see the warranty information.

If you need general help in using your Apple//GS, a good place to start is your local users' group. Many users like yourself, are happy to share information & tips about hardware and software. Apple has a toll free phone number to refer you to the users' group nearest you. The number is 1-800-538-9696 ext 500.

Finally, if you still have a problem after checking the manual and the symptoms listed above, please call us at (415) 546-1866. We'll be happy to help. Call between 9am-5pm Pacific Standard Time.

