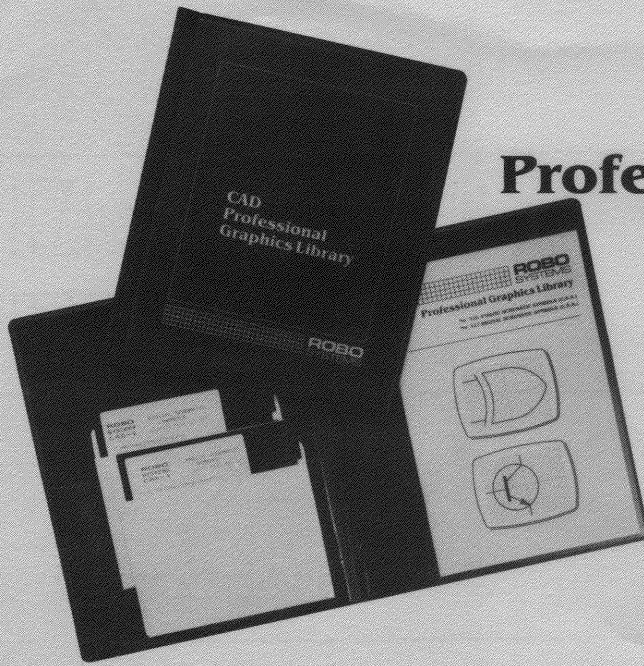




**ROBO
SYSTEMS**

Professional Graphics Library



Pre-drawn graphics for use with ROBO CAD systems

The ROBO Professional Graphics Library contains pre-drawn material for many drawing applications including engineering schematics and graphics for business and education. All the library elements were produced using the ROBO CAD-1 system for the Apple* II computer. They can be used with either CAD-1 or CAD-2.

ROBO pre-drawn library elements are a great time saver. Carefully drafted to a uniformly high standard, they can be instantly changed in size, orientation, compression, color, and line type. They can also be personalized to your exact requirements.

The ROBO library gives you all the advantages of dry-transfer lettering systems, without their one great drawback . . . because each library element can be used an unlimited number of times, you will never find yourself out of a crucial letter or symbol!

Each library disk comes with a pictorial catalog of contents and, where necessary, instructions for use.

Futura Alphabet

Library disk No. 221

A modern sans serif alphabet drawn in outline. The characters can be set at any size, rotation, compression and color.

ABCabc123&

City Medium Alphabet

Library disk No. 222

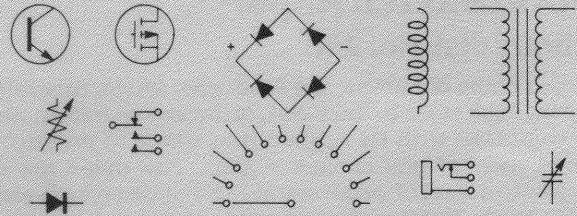
A modern sans serif alphabet in both outline and solid. The characters can be set at any size, rotation, compression and color.

ABCabc123&?
ABCabc123&?

Analog Schematic Symbols

Library disk No. 226

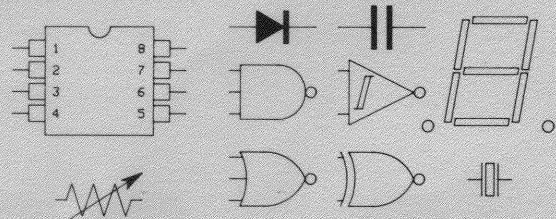
Analog schematic symbols in general use in the U.S.A. Includes transformers, relay contact sets and multi-way switches.



Digital Schematic Symbols

Library disk No. 227

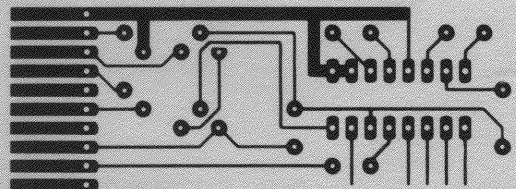
Logic symbols in general use in the U.S.A. Includes seven-segment displays and I.C. package outlines.



Printed Circuit Board Artwork

Library disk No. 228

A complete, easy-to-use system for preparing prototype P.C.B. artwork and silk-screen artwork for component references and solder-resist masks.



* Apple II+ and Apple IIe are registered trademarks of Apple Computer, Inc.

