

Customer Support

At WestCode Software our company “mission” is to create outstanding, innovative products that are easy to use and a good value. This package reflects our dedication to producing well-designed software combined with comprehensive user documentation to help you get the most from your purchase.

We want you to be completely satisfied with our products and service. If you ever have a question or problem with one of our products, and you can't find an answer in the manual, call us for a quick solution. Our knowledgeable technical support staff is available to help you from 10:00 A.M. to 5:00 P.M. Pacific time, Monday through Friday.

(619) 487-9233 Technical questions about products

(619) 487-9200 General information and sales

(619) 487-9255 Fax

Or write to: WestCode Software, Inc.
Attn: Technical Support
15050 Avenue of Science, Suite 112
San Diego, CA 92128

When calling, you should be at your computer, have this manual handy, and be prepared to give the following information:

- The Product Registration number on the inside front cover of this manual
- Your hardware setup (computer type, memory, and so on)
- The version of your System Software
- A description of the problem

Modem users can also receive product support on America Online (keyword: APR) and GENie (A2 bulletin board). Send e-mail to: WestCode.

Customer Comments

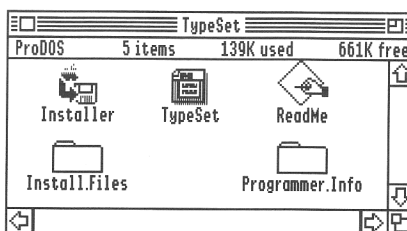
We're always looking for ways to improve our products and frequently add new features requested by our customers. We welcome and encourage your comments for making our products and service even better. We're also interested in ideas for new products that you'd like to see produced.

Installing TypeSet



The TypeSet Disk

TypeSet is supplied on a single 800K disk. Included on the disk is an easy-to-use Install program, the TypeSet software and a file containing release notes.



Also on the disk is the **Install.Files** folder, which contains files needed during the installation process and the **Programmer.Info** folder, which contains files for programmers interested in creating NDAs which can take advantage of TypeSet's features.

Installing TypeSet

The **Installer** program will automatically copy all of the necessary files from the TypeSet disk to your System startup disk.

Before installing TypeSet, double-click the **ReadMe** file to read about any changes which have been made to the program since the printing of this manual.

You must have at least 52K of free disk space on your System startup disk in order to install TypeSet. This should not be a problem if you are using a hard drive or other type of high-capacity disk drive. Skip ahead to the “Using the Installer Program” section in this chapter if you have enough space on your System Disk.

Making Room on the System Disk

If you do not have enough space available, you will need to delete some unnecessary files from your System Disk. Since you'll be modifying your System Disk, it's a good idea to make a copy of it before continuing.

Start up your computer with the copy of the System Disk, then delete the following files to make enough space to install TypeSet. The files and folders listed here are non-essential items typically found on the IIGS System Disk. It's unlikely that you'll need to delete all of these files, so start at the beginning of the list and remove only the necessary items, until 52K of space is available.

System Files That You Can Delete

File/Folder	Explanation
Tutorial	This folder contains files that you probably no longer need. Remove the entire folder from your disk.
BASIC.System and BASIC.Launcher	These two files can be deleted if you don't plan to run BASIC programs while using this particular System Disk. (You can always boot BASIC programs with another System Disk.)
System:Fonts	Many of the bit-mapped fonts in this folder are expendable since Pointless includes TrueType versions of the same typefaces. (Don't delete the TrueType fonts.)
System:Desk.Accs	The only essential file in this folder is CtlPanel.NDA .
System:CDevs	You can remove many of the Control Panel files, however, you will lose the ability to access the functions or options that they provide (many of these CDevs duplicate functions available from the text-based control panel). Do not delete the DirectConnect or Pointless files.
System:System.Setup	If you have a ROM 01 computer, you may delete the TS3 file. If you have a ROM 03 computer, you may delete the TS2 file. If you are not sure which ROM version you have, simply restart. The ROM version of your computer will be displayed at the bottom of the screen.

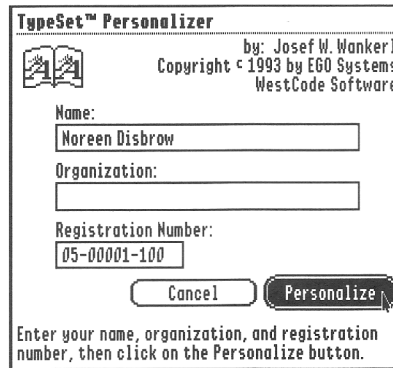
Note

To delete a file from the Finder, drag it to the trash, then select the **Empty Trash** option from the **Special** pull-down menu. Remember to check the amount of free disk space after deleting each item.

Using the Installer Program

The TypeSet disk itself is not a bootable disk. In order to install TypeSet, it will be necessary for you to boot from a hard disk or an Apple IIGS System Disk.

- 1 Run the Installer program on the TypeSet disk by double-clicking the **Installer** icon.



TypeSet™ Personalizer

by: Josef W. Wankerl
Copyright © 1993 by EGO Systems
WestCode Software

Name:
Noreen Disbrow

Organization:

Registration Number:
05-00001-100

Cancel Personalize

Enter your name, organization, and registration number, then click on the Personalize button.

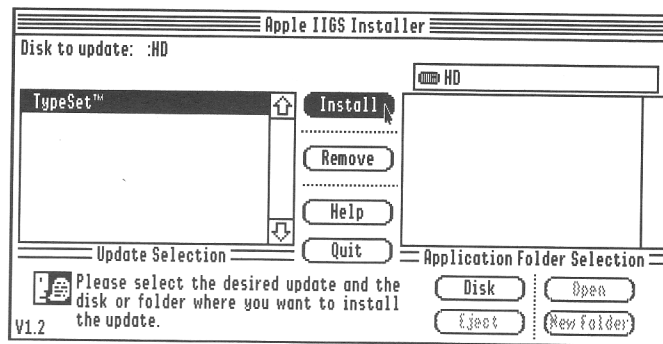
You will need to personalize your original TypeSet disk before installation is possible.

- 2 After the personalization window appears, enter your name on the first line, then press the Tab key to move the cursor to the second line where you may enter your organization's name (if any).
- 3 Then, press the Tab key again and enter your TypeSet registration number, which can be found on the inside front cover of this manual.

- 4 When finished, click the **Personalize** button to complete the personalization procedure.

Note Remember that TypeSet is licensed for use on a single computer. If you plan to use TypeSet on a network or on several computers, contact WestCode Software to obtain an affordable network or site license.

After personalizing your TypeSet disk, the Apple IIGS Installer window will appear.



- 5 If the upper left corner of the window doesn't show your startup disk's name, click the **Disk** button until your startup disk's name appears.

The box at the left indicates the only Installer choice with **TypeSet™** highlighted.

- 6 Click the **Install** button to install TypeSet.

If the Installer reports that the installation was successful, TypeSet is now on your Apple IIGS System startup disk.

Activating TypeSet

After you have successfully installed TypeSet, the Installer program will display a message at the bottom of the screen, stating that “An update has altered system files on the startup disk.”

To restart and activate TypeSet, click the **Quit** button, then click the **Restart System** button. TypeSet will load automatically during the GS/OS startup.



When the system restarts, you should see the TypeSet icon at the bottom of the screen, verifying that TypeSet is loaded and ready to use; the TypeSet icon will not display if you are using System 5. (Again, it is important to note that the Pointless icon should show up before the TypeSet icon in order for TypeSet to work properly.)

Files Copied by the Installer

If you're interested in knowing what the Installer did, it copied the TypeSet software into a folder within the **System** folder on your System Disk. The following table summarizes which files were placed in the folder, with a brief description of each file.

File	Folder	What it's for
TypeSet	Desk.Accs	The TypeSet NDA performs the actual font set management and reporting, and enables your application software to display a WYSIWYG Font menu.
TypeSet.Prefs	Desk.Accs	This file is not copied by the installer, but is created the first time you use TypeSet.

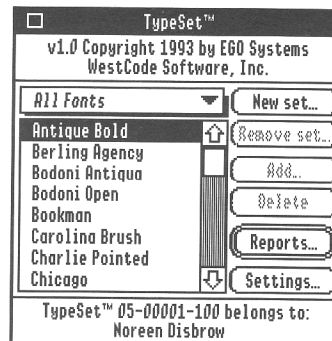
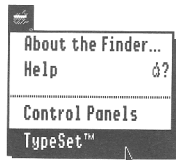
Font Sets



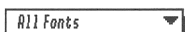
Exploring TypeSet

With TypeSet installed, launch your favorite GS/OS word processor, such as AppleWorks GS, and create a new word processing document. (Note that like Pointless, TypeSet works under the GS/OS System Software. Older, 8-bit software, like AppleWorks Classic, is not supported.)

Next, select **TypeSet** from the **Apple** menu. The TypeSet window will appear.



The Set Selector Menu



At the top of the TypeSet window is the Set Selector *pop-up* menu, which contains the names of all available font sets. To choose a set, simply select it from this menu. When you choose a new set from this menu, TypeSet will dynamically rebuild the Font menu in the currently active application with only the fonts in the active set.

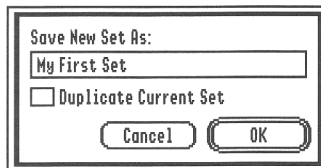
When TypeSet is first installed, only one set will be available: the **All Fonts** set. This set contains all of the TrueType fonts that you have installed in your system with Pointless. The **All Fonts** set cannot be modified or removed, except by adding or removing fonts from within Pointless; see the Pointless documentation for details.

The Font List

Below the Set Selector pop-up menu is a list showing all of the fonts that are included in the active set. The font list will be updated when you select a different set.

New set (Command-N)

The **New set** button creates a new font set for you to work with. When you click this button, you will be asked to type in the name for a new font set. (Set names can be up to 25 characters long.) If you want to copy the contents of the current font set into the new set simply click the **Duplicate Current Set** check box.



When you click the **OK** button, TypeSet will create the new set and rebuild the application's Font menu accordingly.