

AIRPORT DIRECTORY - MIAMI AREA

CITY	AIRPORT	NORTH	EAST	ALT. F	ILS (Rwy/Freq)
Ft Lauderdale	Ft Lauderdale Exec	10532	19650	14	
Ft Myers	Page Fld	10651	18984	18	
Ft Myers	SW Florida Regional	10634	19027	31	
Ft Pierce	St. Lucia Co. Int'l	11083	19528	24	
Frostproof	River Ranch Resort	11184	19200	55	
Homestead	Homestead General	10223	19528	9	
Immokalee	Immokalee	10599	19167	37	
Key West	Key West Int'l	9779	19085	4	
Key West	NAS Key West	9790	19114	6	*
La Belle	La Belle	10732	19147	18	
Lakeland	Lakeland Muni	11254	18885	142	
Lake Wales	Lake Wales Muni	11220	19039	125	
Marathon	Marathon	9873	19356	6	
Marco Island	Marco	10402	19075	6	
Miami	Miami Int'l	10357	19615	10	* 109.1/27R
Miami, Hialeah	Opa Locka West	10419	19561	8	*
Miami	Tamiami	10288	19569	10	
Naples	Naples Muni	10468	19028	9	
Okeechobee	Okeechobee Co.	10970	19354	34	
Pahokee	Palm Beach Co. Glades	10770	19429	17	
Pompano Beach	Pompano Beach Airpark	10558	19674	20	
Punta Gorda	Charlotte Co.	10791	18922	25	
St. Petersburg	Clearwater Int'l	11205	18630	11	
Sarasota	Sarasota-Bradenton	10983	18696	28	
Sebring	Sebring Airport/Ind. Park	11041	19160	63	
Tampa	Tampa Int'l	11240	18690	27	*
Tampa	MacDill AFB	11186	18704	14	
Venice	Venice Muni	10845	18748	19	
Vero Beach	Vero Beach Muni	11154	19505	25	*
West Palm Beach	West Palm Beach Int'l	10746	19662	19	* 109.3/9L
	ATIS 123.75				
Winter Haven	Bartow Muni	11241	18979	128	

BAHAMAS

Congo	Congo Town	9749	20746	15	
Freeport	Freeport Int'l	10737	20209	7	*
Grand Bahama	Grand Bahama Aux AF	10782	20338	9	
Marsh Harbour	Marsh Harbour	10783	20830	10	
Nassau	Nassau Int'l	10136	20749	10	*
South Bimini	South Bimini	10350	20020	10	
Treasure Cay	Treasure Cay	10871	20702	11	

LEGEND



Civil-Public use airport

SANTA MONICA
ATIS 119.15
175-50

Airport Name
Advisory Frequency (if available)
Elevation (feet) — Length (hundreds of feet)

NAME
FREQUENCY



VOR

NAME
FREQUENCY



VORTAC (Distance Measuring Equipment Able)

NAME
FREQUENCY



VOR/DME

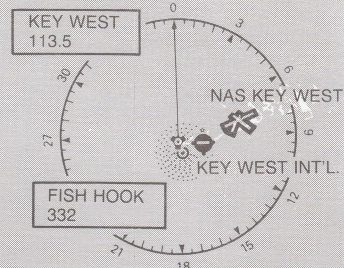
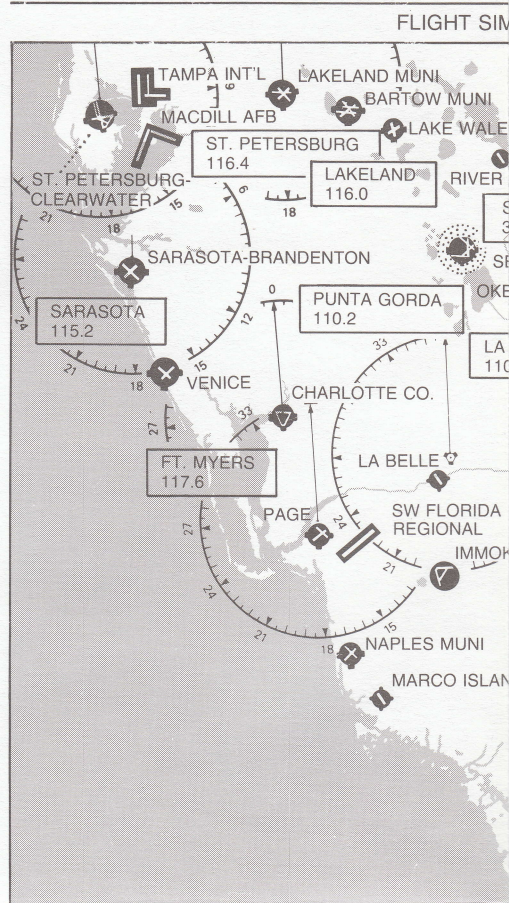
NAME
FREQUENCY



Non Directional Beacon

VOR/DME
NAME
FREQUENCY

If VOR falls directly on an airport, only the airport symbol will be shown. The VOR facility type is shown at the top of the box.



Nautical Miles 0 10 20 30 40 50
Statute Miles 0 10 20 30 40 50

North and east coordinates are canted at + 5° (clockwise) to compensate for orthogonal coordinate grid overlaid on Lambert conic projection.