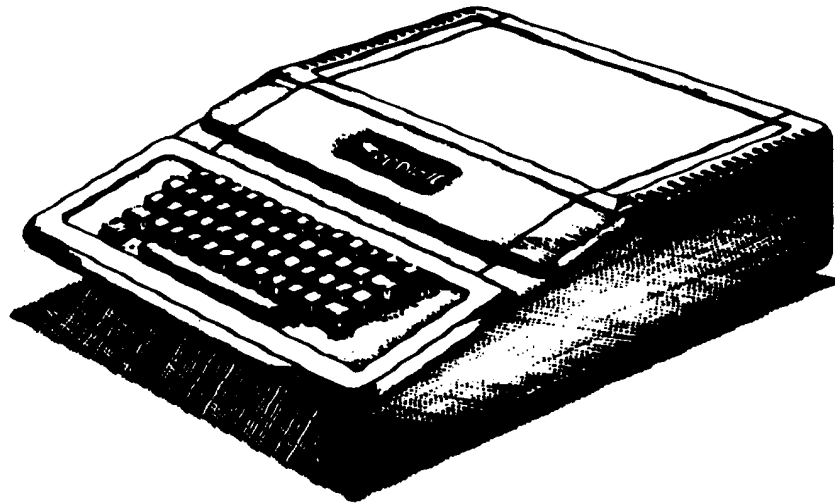




# Apple 2 Computer Technical Information



## Apple II Computer Family Information

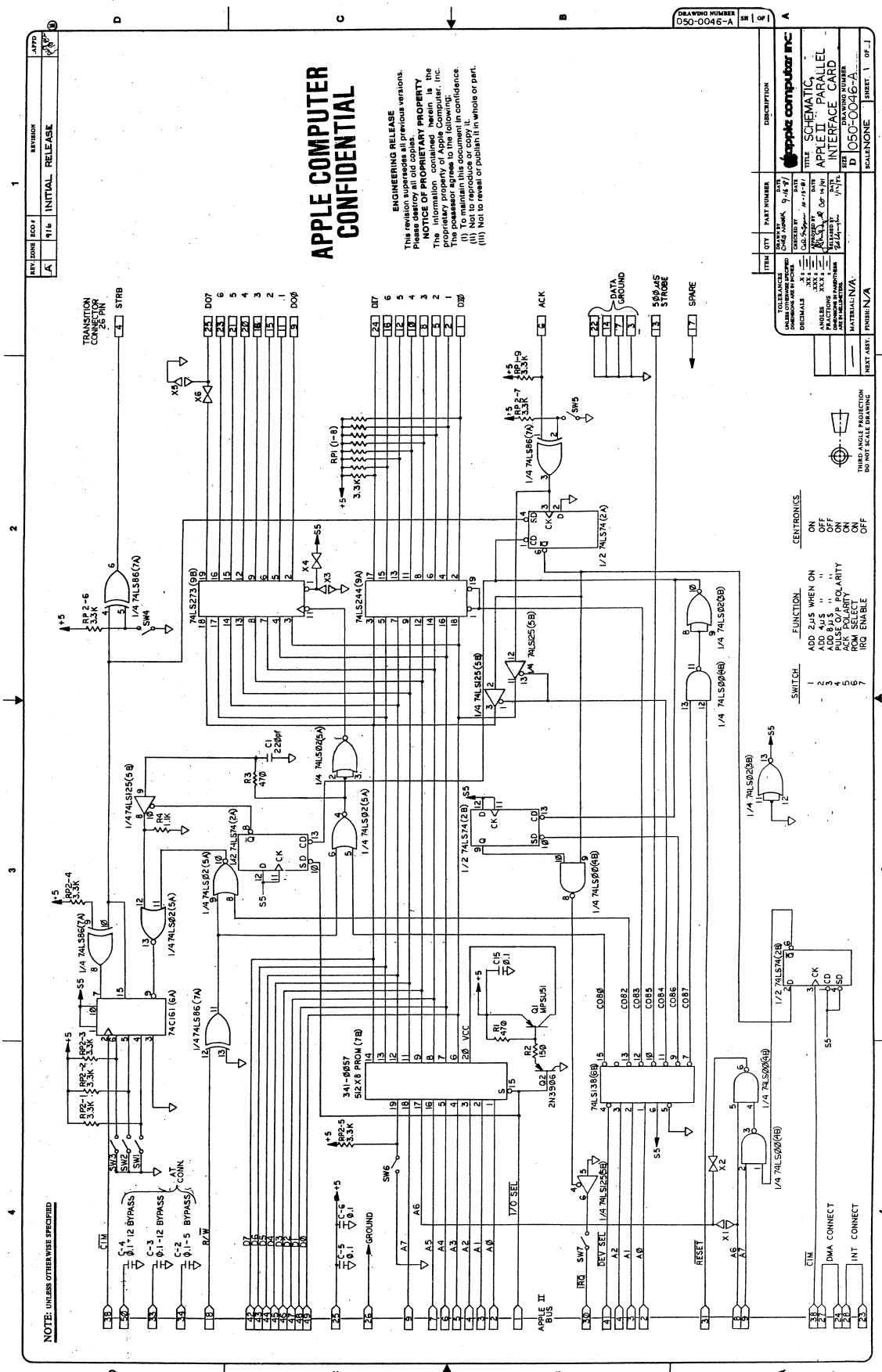
---

Schematic: Parallel Card  
050-0046-A 1/82

*Apple Service Level 2 Technical Reference #204-1011 vol. 2*

Document # **531**

Ex Libris David T. Craig



NOTE: UNLESS OTHERWISE SPECIFIED

**APPLE COMPUTER  
CONFIDENTIAL**

**ENGINEERING RELEASE**  
This revision supersedes all previous versions. Please destroy all old copy **PROPERTY NOTICE** Of this document. The information contained herein is the proprietary property of Apple Computer, Inc. The possessor agrees to this in confidence. (I) To manufacture or copy it. (II) To disclose it. (III) Not to reveal or publish it in whole or part.

DRAWING NUMBER 050-0046-A 1 OF 1

ITEM	QTY	PART NUMBER	DESCRIPTION
1	1	050-0046-A	SCHEMATIC
2	1	050-0046-A	PARALLEL INTERFACE CARD
3	1	050-0046-A	DRAWING NUMBER
4	1	050-0046-A	SHEET 1 OF 1

TOLERANCES UNLESS OTHERWISE SPECIFIED	SCALE
DIMENSIONS: FRACTIONS: DECIMALS: ANGLES: HOLE POSITION: HOLE DIA: MATERIAL: FINISH: NEXT SET: PPH/N/A	1/8" = 1"

SWITCH	FUNCTION	CENTRONICS
1	ADD 24LS WHEN ON	ON
2	ADD 44LS " "	OFF
3	ADD 8 uS " "	OFF
4	ADD POLARITY " "	ON
5	ADD POLARITY " "	ON
6	ROM SELECT	ON
7	IRQ ENABLE	OFF

SWITCH	FUNCTION
1	ADD 24LS WHEN ON
2	ADD 44LS " "
3	ADD 8 uS " "
4	ADD POLARITY " "
5	ADD POLARITY " "
6	ROM SELECT
7	IRQ ENABLE

SWITCH	FUNCTION
1	ADD 24LS WHEN ON
2	ADD 44LS " "
3	ADD 8 uS " "
4	ADD POLARITY " "
5	ADD POLARITY " "
6	ROM SELECT
7	IRQ ENABLE

SWITCH	FUNCTION
1	ADD 24LS WHEN ON
2	ADD 44LS " "
3	ADD 8 uS " "
4	ADD POLARITY " "
5	ADD POLARITY " "
6	ROM SELECT
7	IRQ ENABLE

SWITCH	FUNCTION
1	ADD 24LS WHEN ON
2	ADD 44LS " "
3	ADD 8 uS " "
4	ADD POLARITY " "
5	ADD POLARITY " "
6	ROM SELECT
7	IRQ ENABLE